



Improving stroke services in Bristol, North Somerset and South Gloucestershire

Factsheet: Where could specialist inpatient rehabilitation (rehab) units be?

To give everyone the best chance of fulfilling their goals and being as independent as possible as quickly as possible after stroke, we would like to have two specialist Sub-Acute Stroke Rehabilitation Units (SSARU).

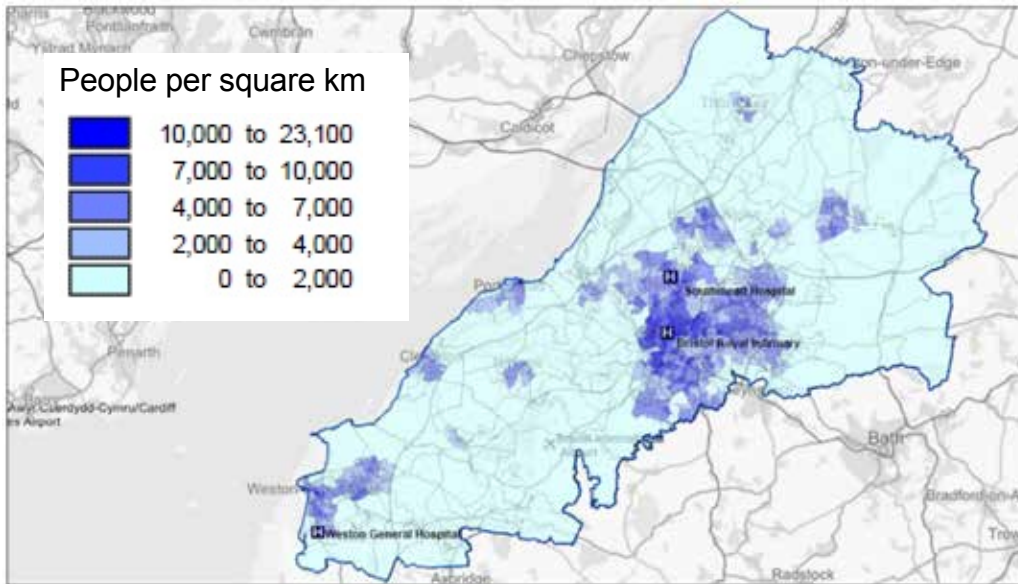
These units would be available seven days a week for those people who need additional treatment and care after the emergency and acute hospital stages.

We would have one inpatient rehab unit on the Weston General Hospital site and propose a second unit one in either Bristol or South Gloucestershire.

What criteria will influence the location of inpatient rehab units?

- To be geographically spread across the area to make access easier for as many people as possible.
- To be closest to where high numbers of people who have a stroke live. Some people are at higher risk of having a stroke, including: older people; Black and South Asian people; people living in deprived areas; and people who smoke.
- Inpatient rehab units need to have: beds, washing areas and kitchens; a gym and space for therapies; space for consultations and quiet areas; good parking; and good availability of public transport.
- To make best use of existing NHS resources (buildings / sites) to ensure we make best use of taxpayers' money and ensure the most value for local people.

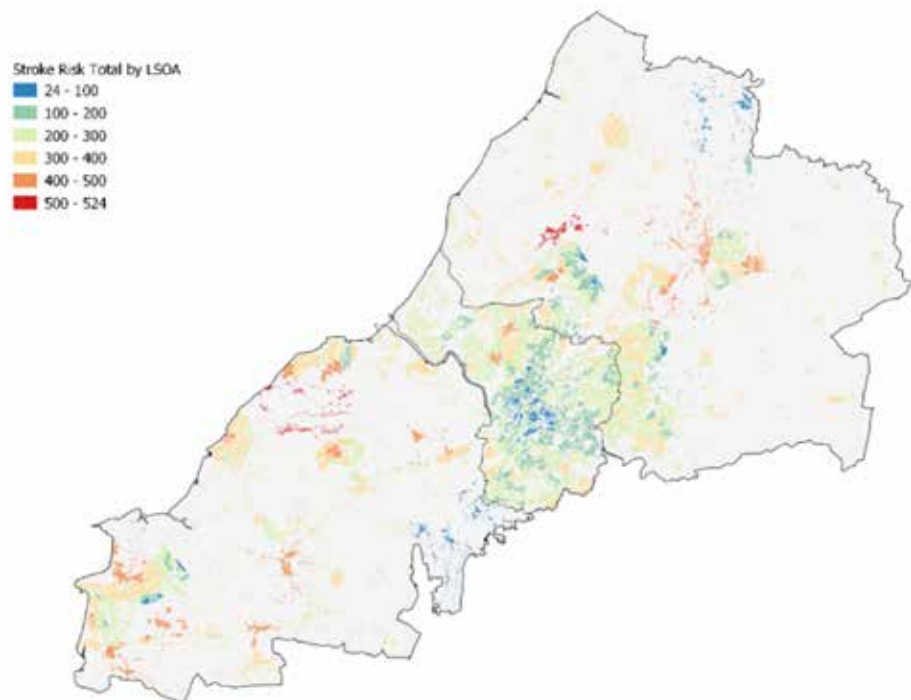
What do we know about the local population?



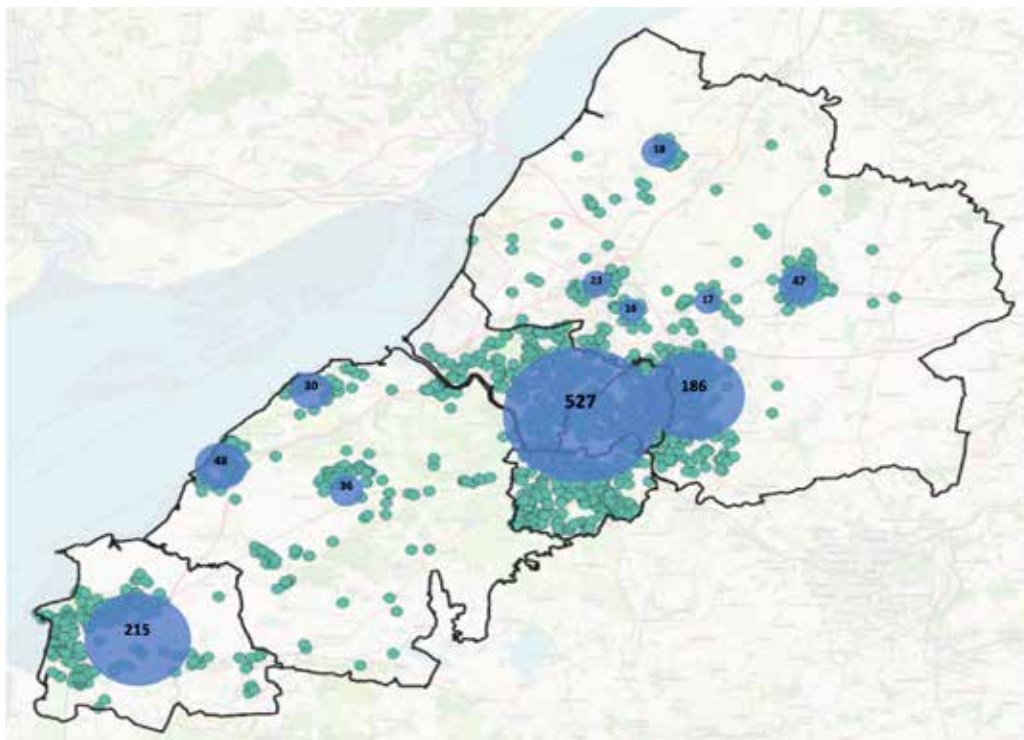
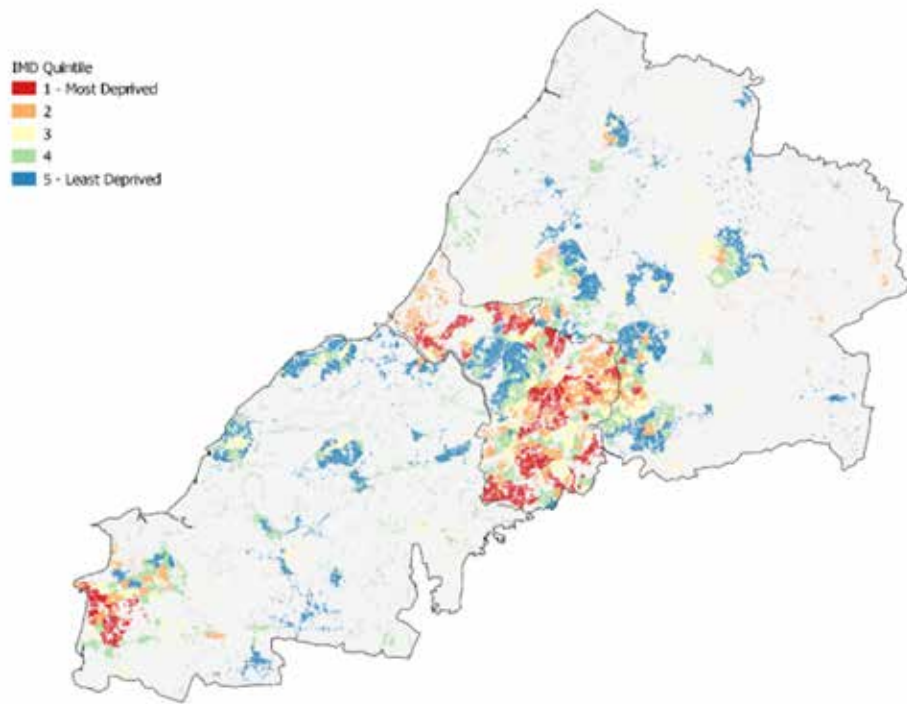
This map shows where people live in our area. The darker the blue, the more people live in that area.

This map shows where people at high risk of stroke live. This includes people aged 70 years or older as well as younger people with risk factors.

The red and orange colours show the largest numbers of people at high risk of having a stroke.



This map shows the most deprived parts of the area, using the Index of Multiple Deprivation (IMD). The most deprived communities are shown in red.



This map shows the number of people who had a stroke in 2019-20 from different parts of our area. The circles show the number of people who had a stroke from main population areas.

Option 1. SSARU at Weston General Hospital site

If the proposed changes to the delivery of stroke services in Bristol, North Somerset and South Gloucestershire go ahead, the Weston General Hospital site in the town of Weston-super-Mare (Weston) would be the location for one of the inpatient rehab units because:

- A large number of older people live in North Somerset, especially around Weston. Older people have a greater chance of having a stroke and are more likely to need specialist stroke rehab services.
- 1 in 3 people who have a stroke in our area live in North Somerset (31%), even though only 1 in 5 of our population live there (22%)
- Weston is one of the most deprived parts of our area. People from deprived areas have a greater chance of having a stroke
- It is more difficult to travel using public transport to other areas from North Somerset
- It can be more time consuming travelling by car to other areas from North Somerset
- We know from experience that people from around Weston don't or can't travel to other areas to use some stroke services.

Option 2. SSARU at second location

There is a summary of options on pg 27 of the Public Consultation document. A decision would consider the criteria outlined on page 1 of this factsheet.