



Have your say about stroke services

We want to **change** how we organise **stroke services** in Bristol, North Somerset and South Gloucestershire.

You can **learn more** at:

www.bnssghealthiertogether.org.uk/stroke-services/.

We need to hear from you by **12 noon on 3 September 2021**.

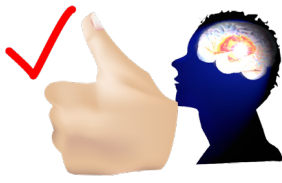


You **do not** have to give your **name**.

You can **miss out** any **question**.

Section 1: Reasons for change

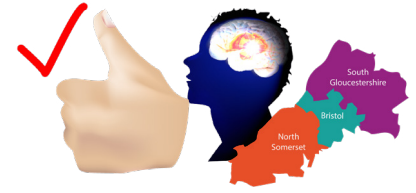
We think that hospital stroke services need to change so:



more people survive and thrive after stroke



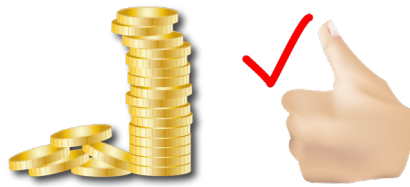
we have specialist stroke doctors, nurses and therapists



people get the best care **no matter where they live**



our stroke care meets national standards



We make best use of NHS funding to meet the population's needs

1: Do you agree with these statements?

I understand **why** the NHS thinks that hospital stroke services need to change.

Yes
fully

Yes
partly

No

I think that **hospital stroke services need to change.**

Yes
fully

Yes
partly

No

Section 2: Emergency treatment immediately after stroke

2: If you had a stroke, which **ONE thing** would be most important to you?

Having the most **specialist staff** and equipment



Going to your **closest hospital**



Going to a hospital that a **loved one** can **visit** in **30 minutes**



Other - please state what

Unable to choose just one thing

Hyper Acute Stroke Unit (HASU)

3: A HASU provides the most specialist acute stroke care.

We don't have one in our area.

We want to set up a HASU at Southmead Hospital.

Everyone could access it: 24 hours a day, 7 days a week, wherever they live.

4: Do you agree with these statements?

A single HASU for the whole area should be located at Southmead Hospital.

Yes
fully

Yes
partly

No

A single HASU for the whole area should be located at another hospital.

Yes
fully

Yes
partly

No

Find out more about the **Hyper Acute Stroke Unit** on **page 16** of the aphasia-friendly consultation document.



Why is one HASU for Bristol, North Somerset and South Gloucestershire a good or bad idea?

How would it affect you?

What are your worries?

Section 3: Ongoing hospital treatment

An **Acute Stroke Unit (ASU)** offers ongoing treatment and care, after the emergency admission.

At the moment, our services are spread out across 3 hospitals.

Access to specialist stroke staff, 7 days a week, 24 hours a day is not always possible.

We propose two options:

- an **Acute Stroke Unit (ASU)** at **Southmead Hospital**.
- **one ASU at Southmead Hospital** and **one at Bristol Royal Infirmary**

Most people would **stay at Southmead Hospital** providing **continuity of specialised stroke care**.

Bristol Royal Infirmary is the **second choice** as it has **other specialist services** (e.g: cancer, cardiac).

A dedicated stroke team at Bristol Royal Infirmary would also provide specialist stroke care to patients that needed it in other parts of the hospital.



Find out more about specialist stroke wards on page 18 of the aphasia-friendly consultation document.



5: Which statement do you prefer?

I prefer **one specialist stroke unit** at Southmead Hospital.



I prefer two specialist stroke units, one at Southmead Hospital and one at Bristol Royal Infirmary



Please **explain your choice**. How does it **affect you**? What is **good** and **bad** about it? What are your worries?

Section 4: Stroke Sub-acute Rehabilitation Units (SSARU)

Most people start stroke rehabilitation in hospital and then continue at home.

Current access to stroke rehabilitation is different in different areas.

We want to change this and **create two specialist inpatient units** called Stroke Sub-acute Rehabilitation Units (SSARU).

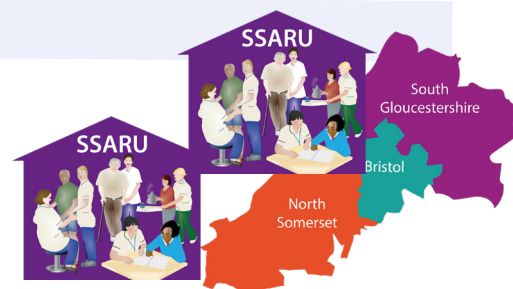
We propose **one unit** will be at the **Weston General Hospital site** and **one** somewhere in **Bristol or South Gloucestershire**.

Find out more about the **Stroke Sub-acute Rehabilitation Units (SSARU)** on **page 21** of the aphasia-friendly consultation document.



6: Do you agree with these statements?

One **Stroke Sub-acute Rehabilitation Unit** should be at the **Weston General Hospital site**.



Yes
fully

Yes
partly

No

There should be **two Stroke Sub-acute Rehabilitation Units** serving the **whole area**.



Yes
fully

Yes
partly

No

There should be **more than two Stroke Sub-acute Rehabilitation Units** serving the area.



Yes
fully

Yes
partly

No

7: What do you think of having **two Stroke Sub-acute stroke units**?

Rehabilitation Units

How would it **affect you**?

What do you think is **good** or **bad**?

What are your **worries**?

8: **Where** do you think we should have the **second Sub-acute Rehabilitation Unit?**
Choose one.

Elgar Unit at Southmead Hospital, Bristol

The Frenchay site
South Gloucestershire

Skylark Unit at The Meadows care
home, Yate, South Gloucestershire

South Bristol Community Hospital,
Hengrove, Bristol

Other - please say where

Don't know / no preference

9: What else should we think about when we decide where to
have Stroke Sub-acute Rehabilitation Units?



Section 5: New Integrated Community Stroke Service

Whilst not part of the formal consultation, we plan to invest in a new **Integrated Community Stroke Service**.

This would help all **services work together** and communicate more easily.

People would get **care more quickly** when they leave hospital.

Rehabilitation would be available at home and **7 days a week** if required.

There would be **emotional support** to help people and their friends / families to manage their own health and well being.

It would help people be as **independent** as possible after stroke.

Find out more about the **Integrated Community Stroke service** on **page 24** of the aphasia-friendly consultation document.



10: Do you have any comments about our plans for the new Integrated Community Stroke Service?

11: Would you like to say anything else about our ideas for stroke services?

Section 6: About you

Please **let us know about you**.

We need to check we are hearing from a wide range of people.

Leave blank anything you **do not want to answer**

12: What **area** do you live in?

Bristol

North Somerset

South Gloucestershire

Taunton

Sedgemoor

Other (please specify)

13: What is your **age** group?

Under 25 years

65 to 75 years

25 to 40 years

76 and older

41 to 64 years

14: What is your **gender**?

Male

Female

I prefer to self describe

15: How would you describe your **ethnic origin**?

White

Asian or Asian
British,

Black or Black
British,

Gypsy Roma
Traveller,

Other Ethnic group

16: Do any of these apply to you?
Choose as many as apply or leave blank.

I have had a stroke

I care for someone who had a stroke or have a close family member who had a stroke

I have a disability or impairment

I have a long-term physical or mental health condition, other than stroke

I care for someone with a physical or mental health condition, other than stroke

I am employed by the NHS or the health and care sector

17: Is this an official response from an organisation or group?

No

Yes - please tell us the name of your organisation

Thank you.

Thank you. We'll be using the feedback you give us when planning next steps and making decisions.