

Healthier Together

Improving health and care in Bristol,
North Somerset and South Gloucestershire



NHS

Bristol, North Somerset
and South Gloucestershire
Clinical Commissioning Group

Tell us what you think about our plan to make stroke services better

in Bristol, North Somerset and South Gloucestershire

Questions



1. What do you think about it?

Good

Bad

Not sure



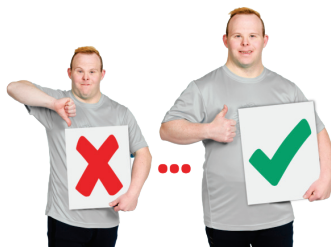
Easy read booklet

Tell us what you think before
Friday 3 September 2021

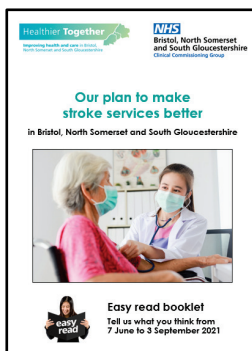
Who we are and what this booklet tells you about



We are **Bristol, North Somerset and South Gloucestershire Clinical Commissioning Group** (called **BNSSG CCG** for short).



We have a plan to make stroke services in our area better. We want you to tell us what you think about our plan. We have written some questions for you to answer.



Read our **plan booklet** called **Our plan to make stroke services better** before you answer the questions.



You need to tell us what you think by **12 midday** on **Friday 3 September 2021**.

How to complete this form



Draw a tick in the little boxes to pick the answer that is right for you.



Write your answers in the big boxes to tell us your answer.



In the big boxes you might want to tell us how these changes would affect you, what you think would be good about them or what your worries are.

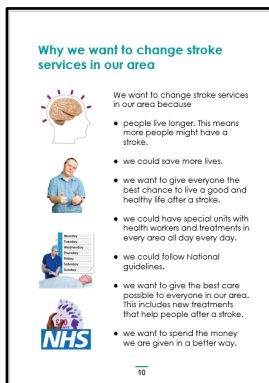


You do not need to give your name. You can miss out any question.

Why we want to change stroke services in our area



We want to make stroke services in our area better.



Look at **page 10** of our **plan booklet** for more about why we want to make changes.

Do you understand why we think stroke services need to change?

Pick **1** box that is right for you



 **Yes**

 **No**

Do you think stroke services need to change?

Pick **1** box that is right for you



 **Yes**

 **No**

How we want to make emergency treatment better




After having a stroke most people need to go to hospital.

What would be most important to you if you had a stroke?

Pick **1** box that is right for you



- Going to a hospital that has the best stroke health workers and equipment
- Going to your closest hospital
- Going to a hospital that friends and family can get to quickly
- I can't choose just one thing
- Something else (please tell us what) 

How we want to make emergency treatment better



We know that having special stroke services in 1 place is best for people's health and lives.



We want to have 1 HASU at Southmead Hospital.



We think Southmead Hospital is the best place to have the HASU because

- it already has good equipment for the types of brain problems that might happen when you have a stroke.
- it can look after more people who need emergency treatment.
- 7 people out of every 10 people in our area can get to Southmead Hospital in 30 minutes.
- ambulances can get to Southmead Hospital quickly.



12

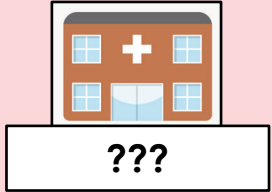
Look at **red pages 12 to 13** of our **plan booklet** for more about HASUs.

Do you think there should be 1 HASU at Southmead Hospital for the whole area?
Pick **1** box that is right for you



 **Yes**  **No**

Do you think the HASU should be at a different hospital?
Pick **1** box that is right for you



 **Yes**  **No**

Why do you think having 1 HASU for the whole area is a good or bad idea?
Put your answer in the box below



How we want to make ongoing acute hospital treatment better

How we want to make ongoing acute hospital treatment better

ASU

We want people to get ongoing acute hospital treatment and care in an **Acute Stroke Unit** (called an **ASU** for short).

An **ASU** is a special stroke unit where people are supported in hospital after emergency treatment. We want to have 1 or 2 ASUs in our area.

We think Southmead Hospital is the best place to have an ASU because

- it already has good equipment and the newest treatments.
- people can move easily from the HASU.

We think Bristol Royal Infirmary is the best place for a second ASU because

- people who have some illnesses treated there are more likely to have a stroke.

14

Look at **yellow pages 14 to 15** of our **plan booklet** for more about ASUs.



We have 2 ideas about where to have ASUs

- 1 ASU at Southmead Hospital
- or**
- 2 ASUs – 1 at Southmead Hospital and 1 at Bristol Royal Infirmary.

Which answer do you like best?

Pick **1** box that is right for you



I want there to be **1 ASU** at Southmead Hospital, for everyone in our area

I want there to be **2 ASUs**, 1 at Southmead Hospital and 1 at Bristol Royal Infirmary

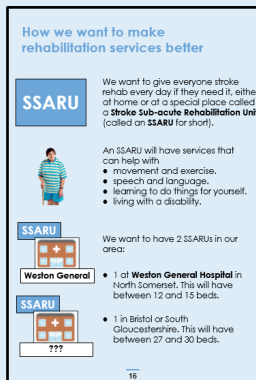
Why did you pick that answer?

Put your answer in the box below

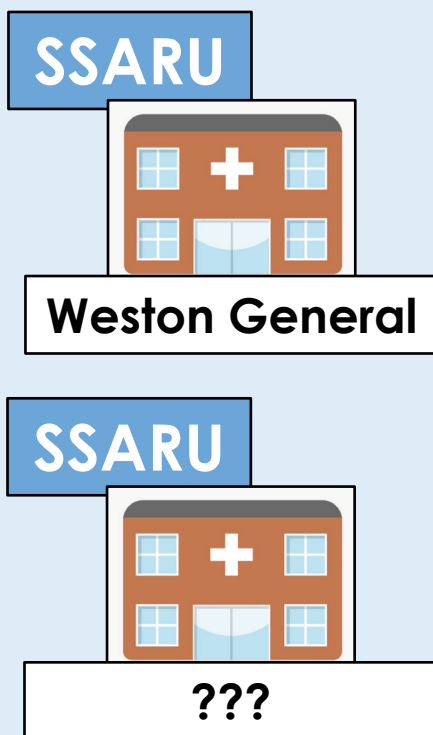


A large, empty rectangular box with a black border, intended for the user to write their answer to the question above.

How we want to make rehabilitation services better



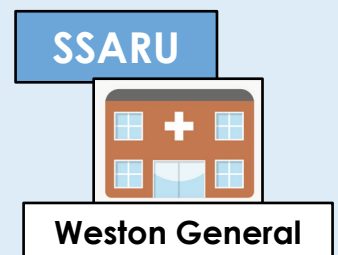
Look at **blue pages 16 to 17** of our **plan booklet** for more about SSARUs



We want to have 2 SSARUs in our area

- 1 at Weston General Hospital site in North Somerset. This will have between 12 and 15 beds.
- 1 in Bristol or South Gloucestershire. This will have between 27 and 30 beds.

Do you think there should be a SSARU at Weston General Hospital site?
Pick **1** box that is right for you

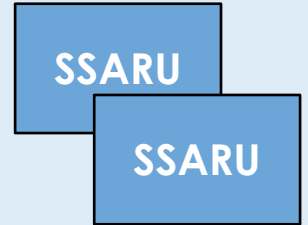


Yes

No

Do you think we should have 2 SSARUs for the whole area?

Pick **1** box that is right for you



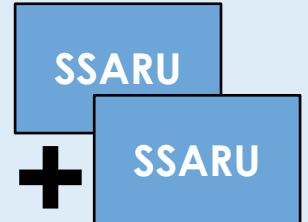
Yes



No

Do you think we should have more than 2 SSARUs for the whole area?

Pick **1** box that is right for you



Yes



No

Why do you think having 2 SSARUs is a good or bad idea?

Put your answer in the box below




SSARU



???

Where should the second SSARU be?

Pick **1** box that is right for you

- I don't know
- Elgar Unit at Southmead Hospital, Bristol
- A new building at Frenchay, South Gloucestershire
- Skylark Unit at The Meadows care home, Yate, South Gloucestershire
- South Bristol Community Hospital, Hengrove, Bristol
- Somewhere else (please tell us where) 

What else should we think about when we decide where to have our SSARUs?

Put your answer in the box below



About the Integrated Community Stroke Service

About the Integrated Community Stroke Service

ICSS We want to make a new **Integrated Community Stroke Service** (called **ICSS** for short) to help people with rehab after they leave hospital or a live-in rehab unit.

This service will have a team of people who work together to help with things like:

- learning to do things for yourself.
- movement and exercise.
- speech and language.
- healthcare.
- your diet and what you eat.
- how you think and feel.
- living with a disability.

This will help people in our area to get the support they need at home and in the community every day.

18

Look at **green page 18** of our **plan booklet** for more about the ICSS.

What do you think about the ICSS?
Put your answer in the box below



**Would you like to tell us anything else
about our ideas for stroke services?**

Put your answer in the box below



A large, empty white rectangular box with a black border, intended for the user to provide their answer to the question above.

About you



Please tell us about you. This helps us check we are hearing from lots of different people.



You can miss out any question.

What area do you live in?

Pick **1** box that is right for you



Bristol

Taunton

North Somerset

Sedgemoor

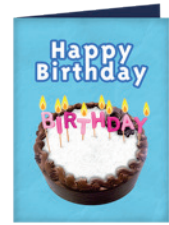
South Gloucestershire

Other area (please tell us where)



How old are you?

Pick **1** box that is right for you.



Under 25 years

65 to 75 years

25 to 40 years

76 years and older

41 to 64 years


What is your gender?

Pick **1** box that is right for you



Male

Female

Something different (please describe to us) 



Gender means if you are male, female or something different.

How would you describe your ethnic origin?

Pick **1** box that is right for you



White

Asian or Asian British

Black or Black British

Gypsy Roma Traveller

Other ethnic origin (please tell us) 



Ethnic origin means your background and where you come from.

Are any of these true for you?

Pick **all** the boxes that are right got you



- I have had a stroke
- I care for someone who had a stroke or have a close family member who had a stroke
- I have a disability or impairment
- I have a long-term physical or mental health condition that isn't a stroke
- I care for someone with a physical or mental health condition that isn't a stroke
- I am employed by the NHS or the health and care sector

Are you answering these questions for an organisation or group?

Pick **1** box that is right for you



No



Yes (please tell us the name)



Thank you



Thank you for your answers.



We will think about what you have told us.



What you have told us will help us make decisions about stroke services in our area.

