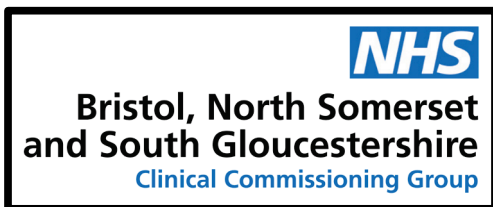


Why our local health services need to change



Easy read booklet

Who we are and what we do



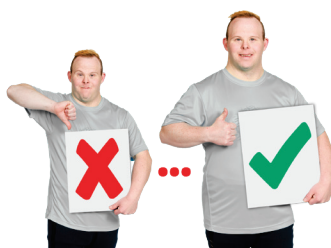
We are **Bristol, North Somerset and South Gloucestershire Clinical Commissioning Group**.



We run your health care services and look after your doctors and nurses.

HEALTHY WESTON

We make changes to local services to make them better. We call this work **Healthy Weston**.



We need to make changes so that we can give better health care services. This booklet is about the 4 main problems we have.

Our local health and care services



We run different health and care services for people who live in Somerset, Bristol and South Gloucestershire.



This means services like

- your GP practice
- community and mental health care



- hospitals
- ambulance services



- social care, like support workers
- nursing and care homes.

Weston General Hospital



Weston General Hospital is having some problems.



We don't have enough staff to keep the **A&E department** open so we've had to close it for a while.



The **A&E department** is where you go if you have had an accident or an emergency.



We have to work quickly to make sure Weston General is a good hospital.

The 4 main problems we have



Problem 1

Peoples health needs are changing.



Problem 2

Some people are getting worse care than others.



Problem 3

We don't have enough staff and we want the best people to work for us.



Problem 4

We need to spend our money in the best way.

Problem 1

Peoples health needs are changing



More people live here. The people who live here are older and are living for longer with **long-term health conditions**.

A long-term health condition is when you are ill for a long time.



Our health and care services are needed more and in new ways. So we need to get bigger and change.



New Home

The facts

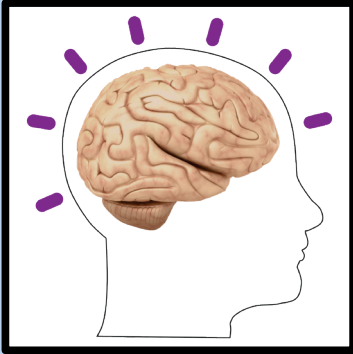
- More people are living here.
- New houses are being built so more people will move here.
- More older people move here so there will be more older people living here in the future.
- Less local people are having children.





More people need to use our health care services for long-term health conditions like

- diabetes
- lung problems
- high blood pressure
- **mental health problems**



Mental health problems affect your mood, thinking and behaviour.



People in North Somerset live long and healthy lives. But people living in richer parts live longer.



Thinking about how to solve this

We need to change so we take better care of older people and young families.



People need local services to help them stop getting unwell.

If people have an emergency they need the best specialist services.

Problem 2

Some people are getting worse care than others



In our area there are lots of different sized GP practices.



Smaller GP practices can't offer lots of different services. They can find it hard to run services if staff are away or unwell.



Our community services and staff do not share information very well. So you might have to explain things more than once.



Some older people might be in hospital even if they are not unwell. It is hard for older people to leave hospital once they are there.

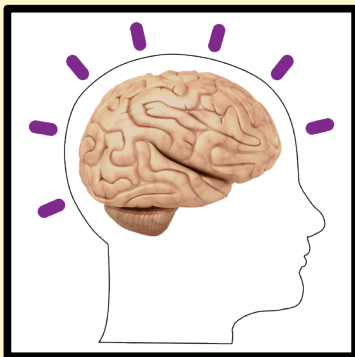


The facts

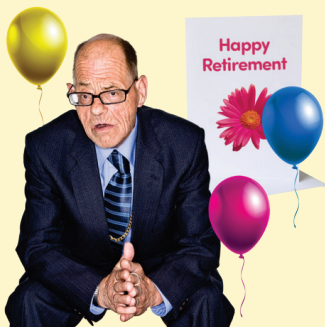
- Some people choose to go to A&E rather than see their doctor.



- Some GP practices are good at watching their patients and helping them before they need to go to A&E.



- People with mental health problems are more likely to go to A&E.



- Older people are much more likely to be in our hospital beds than other people.

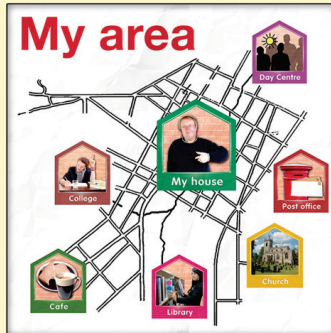
- Lots of our older GPs will stop working soon. We do not have enough young GPs to do their jobs.



- We need more community nurses, therapists and care assistants.



Thinking about how to solve this



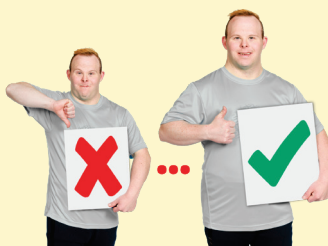
Better healthcare means healthier people. No one should get worse health care because of where they live.



Our GP practices and services should talk to each other more.



We should help older people before they get unwell so they don't have to go to hospital.



We are already working better together to make sure that everyone gets the same good service at their GP practice.

Problem 3

We don't have enough staff and we want the best people to work for us



Weston General is one of the smallest hospitals in the country because not many people live close to it.



The amount of people who can use the hospital is much lower than is recommended by **national guidelines**.



A **national guideline** is a target that helps us give the right care.



Lots of doctors and nurses want to work in bigger hospitals as they would see more patients and learn more.



The facts

- Not all patients who go to A&E need to go there. They could be helped by other services.
- We don't have enough doctors and nurses and its hard to get more.
- We spend a lot more money than other hospitals on **temporary staff**.



Temporary staff are staff we get from somewhere else to work for a short time.



- New doctors don't always get the best training and this can make them unhappy.
- We've had to close A&E at night because we don't have enough staff to work for us.
- Some patients who live close are being taken to other hospitals in Bristol instead of Western General Hospital.





Thinking about how to solve this



We need to make changes quickly at Weston General Hospital so that it is better for staff and patients.



We want less people to have to go somewhere else for their care.



We can do more operations at Weston General Hospital so that people do not have to wait as long.



It is important that we make Western General Hospital better for everyone.

Challenge 4

We need to spend our money in the best way



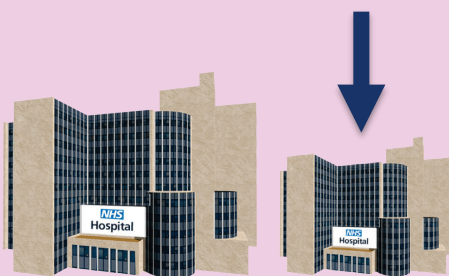
We are getting more money from the government but we are still spending too much.



It's important we spend all the money we get in the right way.



Because we spend more money than we get we can't spend money on making our services better or getting new services.



Western General is a small hospital. This makes it harder to spend less money.



The facts

- We spend more money on services that people don't use as much.



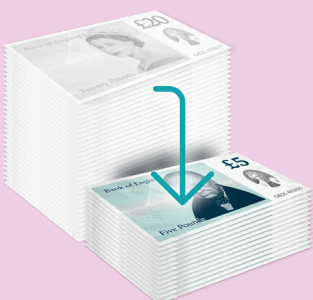
- Even if we spent our money as well as the best hospitals we would still spend too much.



- We need to make changes soon otherwise our overspending will get bigger in the future.



- We spend too much money on temporary staff.



- The hospital has less patients each year so we are given less money.



Thinking about how to solve this



We are getting better at spending less money but we need to get even better.



We need to use our staff, buildings and equipment better.



We want to spend more money on the services that are most important to you.



We will work hard to make sure Weston General Hospital has the best services for you in the future.

What you've told us about the changes you think are needed



We have listened to our staff, patients and local people.



We have 2 written reports you can read to find out more about the changes people want.



Here are the things you told us are most important to you

- Day-to-day care needs to be closer.
- Local people want to know that the future for Western General Hospital is good.





- If someone has an accident or emergency they need to be able to use our services anytime.

- Too many people are in hospital when they could be treated somewhere else.



- We need to offer staff interesting and exciting jobs so we get the best people to work for us.

- Everyone should get the same great care no matter they live.



- We should think about how far people have to travel.

- Services should talk to each other better so that people don't have to say the same things over again.



- People want to know what is happening when they or their loved ones are being cared for.



- Local people need to be told about any big changes and have a chance to have their say.

How we will make changes



We found 3 types of changes we can make.



1. Changes that can be made right now. Like better tests for older people.



2. Changes that can be made right now but need some work. Like a better mental health center.



3. Changes that will take longer to make but will make us better in the future.

How we have started to make changes



GP practices are already working more closely together in some of our poorest areas.



We have more money for mental health services for children.



We have changed how we look after older people. We will continue to keep looking at this to make it even better.

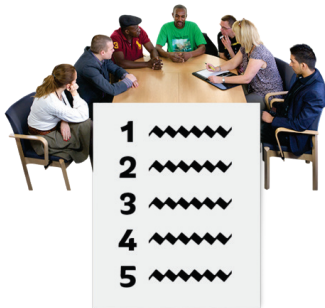


We have been thinking hard about the services we provide and how to make Weston General Hospital as good as it can be.

What happens next



We have been thinking hard about how to be better but no final decisions have been made.



- We will talk to people and ask them what they think.
- We will make a list of the changes we think will work best.
- We will ask you what you think about our changes in early 2019.



There will be lots of chances for you to tell us what you think over the next few months.



You can see all the latest news on this website.

www.bnssghealthiertogether.org.uk/healthyweston

What to do if you have any questions



Send an email to this address
bnssg.healthyweston.enquiries@nhs.net



Call this telephone number
0117 900 2198



Write to us at this address
**Healthy Weston
BNSSG CCG
South Plaza
Marlborough Street
Bristol, BS1 3NX**



Find out more on these websites
**[www.bnssghealthiertogether.org.uk/
healthyweston](http://www.bnssghealthiertogether.org.uk/healthyweston)**
www.facebook.com/BNSSGCCG/