

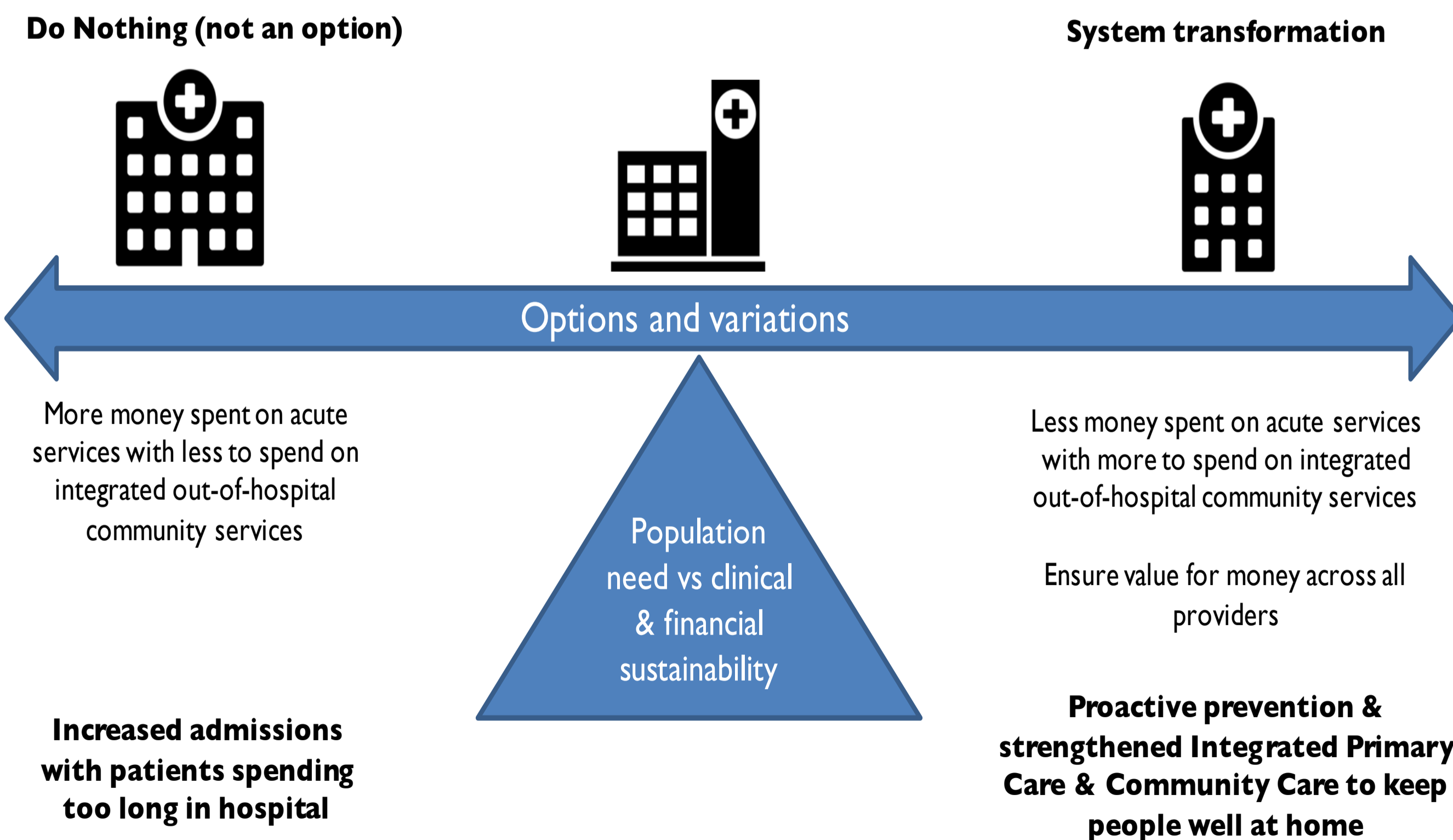
Healthy Weston



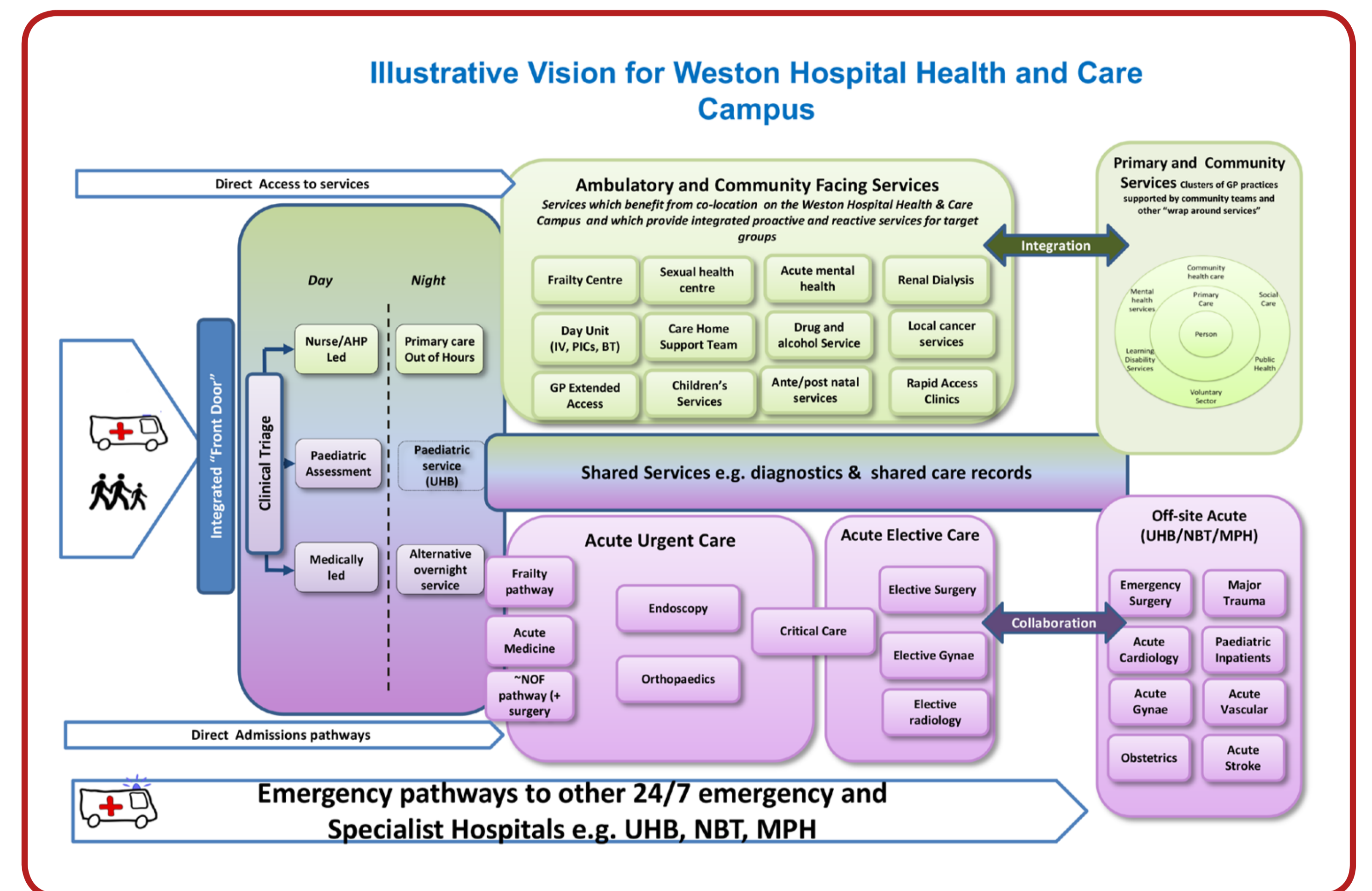
Challenges

- The population in Weston is both aging and growing.
- The CCG is making a number of premium payments to support services, this is funding that is not available for other services.
- Despite population increase, activity has been falling in Weston year on year.
- The current vacancy level for Doctors in Weston is 27% and for nurses it is 20%. There are gaps in rotas for junior doctors and lack of resident cover beyond ST2 in most specialties.
- The midwife led maternity service is not chosen by enough women to make it viable with just 170 in 2016/17.
- The A&E service temporarily closed overnight in July 2017 due to the inability to provide safe staffing levels 24/7.
- The Trust has been in financial deficit since 2010/11 and this is increasing year on year.

A Balanced System



Opportunities



- Strengthening primary and community based services, working at scale to help people stay well, independent and at home wherever possible.
- Greater collaboration across acute trusts, through the acute care collaboration and enabled by greater partnership working between University Hospitals Bristol NHS Foundation Trust and Weston Area Health NHS Trust.
- Strong more integrated community services supported by a "Health & Care Campus model on the Weston General Hospital Site.



Vision for 2023

Healthy Weston



In 2023, people will be saying....

"Weston General Hospital Health and Care Campus is a great place to work"

"I can get to see the right health care professional when I need to"

"Healthy Weston has been great we have really had the opportunity to shape the way our services have been developed"

"We have reduced the health inequality gap in Weston and Worle"

"I feel confident in the local health care system"

How will we know?

- Frail older people living in Weston and Worle are less likely to be admitted to hospital in an emergency because they are being supported to remain independent.
- Recruitment and retention across medical, nursing and allied health professional roles in primary, community and hospital based services is good in Weston and Worle.
- Year on year we have been able to increase the relative investment in primary, community and mental health services in Weston and Worle.
- Weston Hospital Health and Care Campus is seen as a national exemplar for integrated services.
- There is greater involvement of the voluntary sector in the provision of local services.
- There is integration of mental and physical wellbeing at all levels and care settings.



Healthy Weston



Our achievements

“Healthy Weston: Joining up services for better care in the Weston Area: A Commissioning Context for North Somerset 2017/18 to 2020/21” approved by CCG Governing Body in October 2017

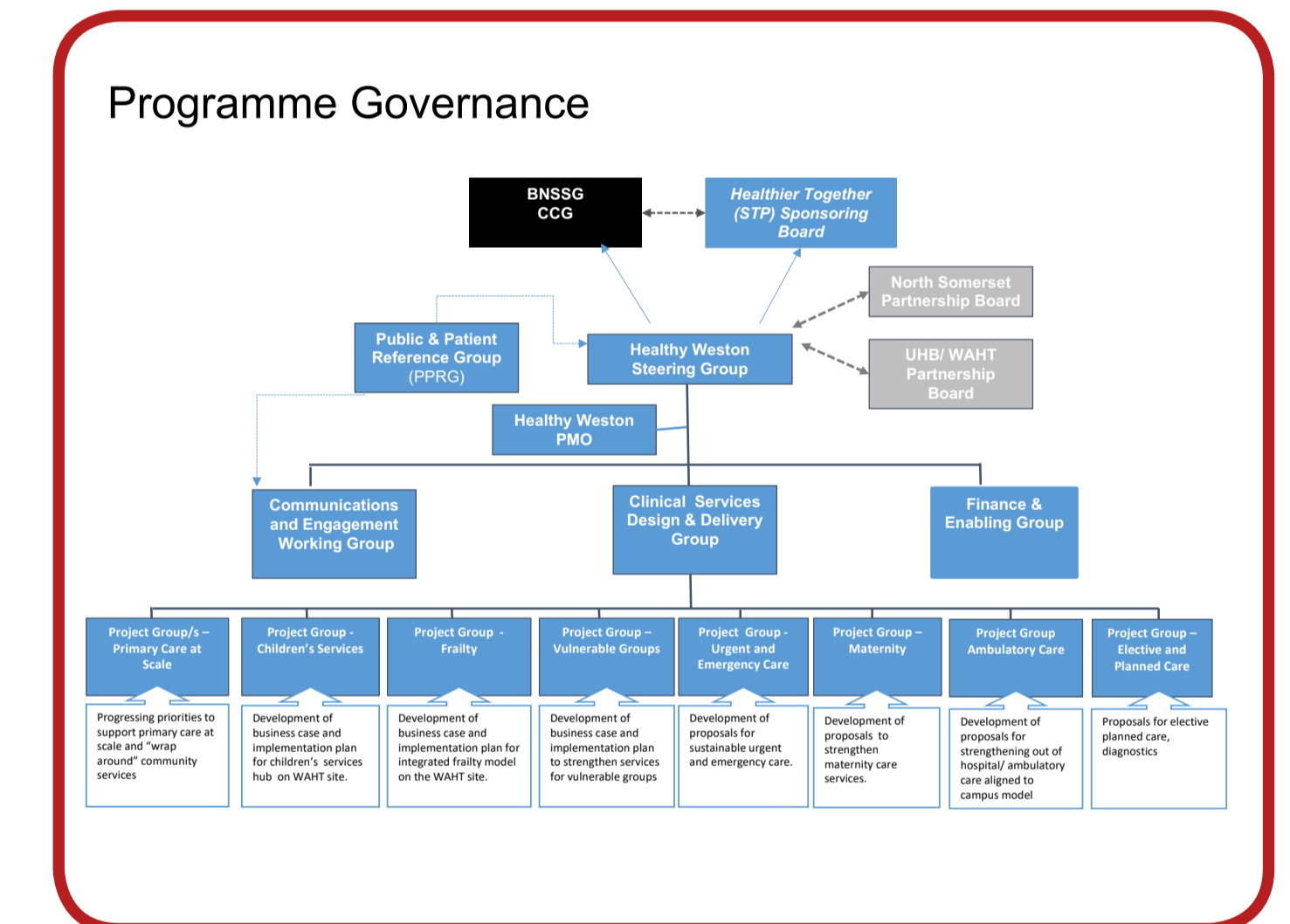
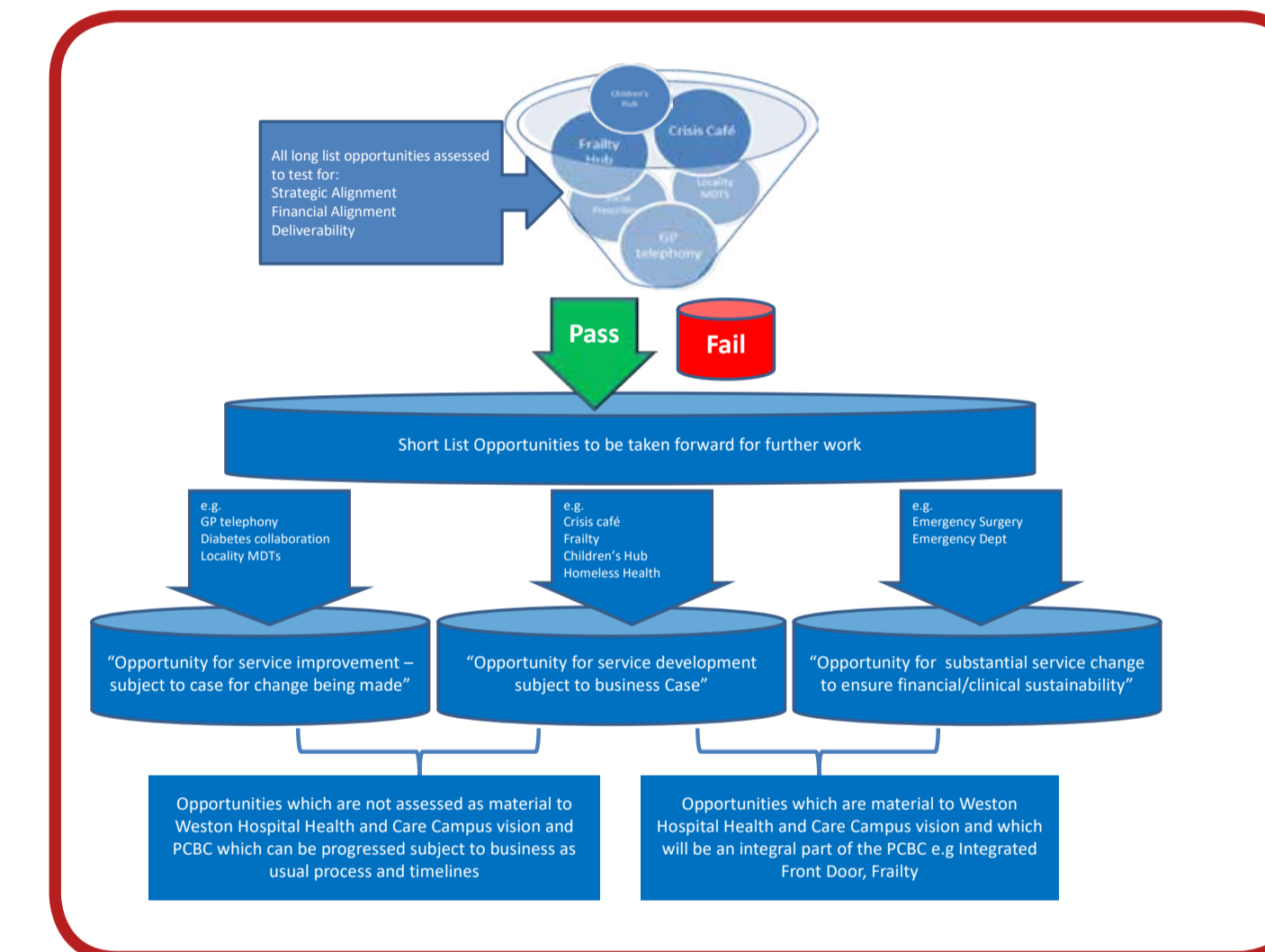
Extensive co-design and engagement completed – over 1,627 pieces of feedback representing 2,518 people. The case for change is now widely understood and we have generated ideas and opportunities for improvement.



Managing the Transition from Co-Design to Pre-Consultation Business Case (PCBC)

We are working through a process to consider the long list of opportunities generated through the co-design work to agree how these will be taken forward.

We have refreshed the Healthy Weston Governance to support the next phase of work – to develop the pre-consultation business case by the Autumn of 2018.



Opportunities to strengthen services developed through process of engagement and co-design.

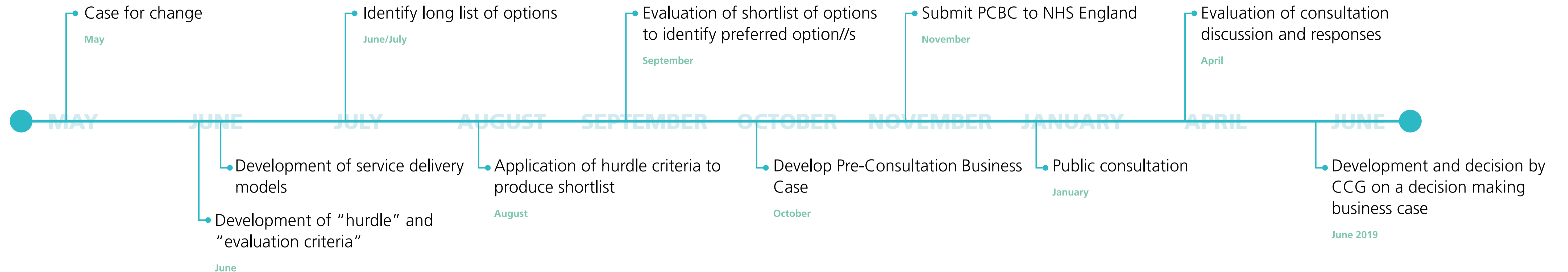
- Ideas to improve primary care resilience
- Ideas to improve pathways for people with complex care needs and long term conditions
- Ideas to improve care for people living with frailty
- Ideas to support “strong focused hospital”
- Ideas to improve services for children and young people in need of acute care, mental health and community services



Healthy Weston



What next?

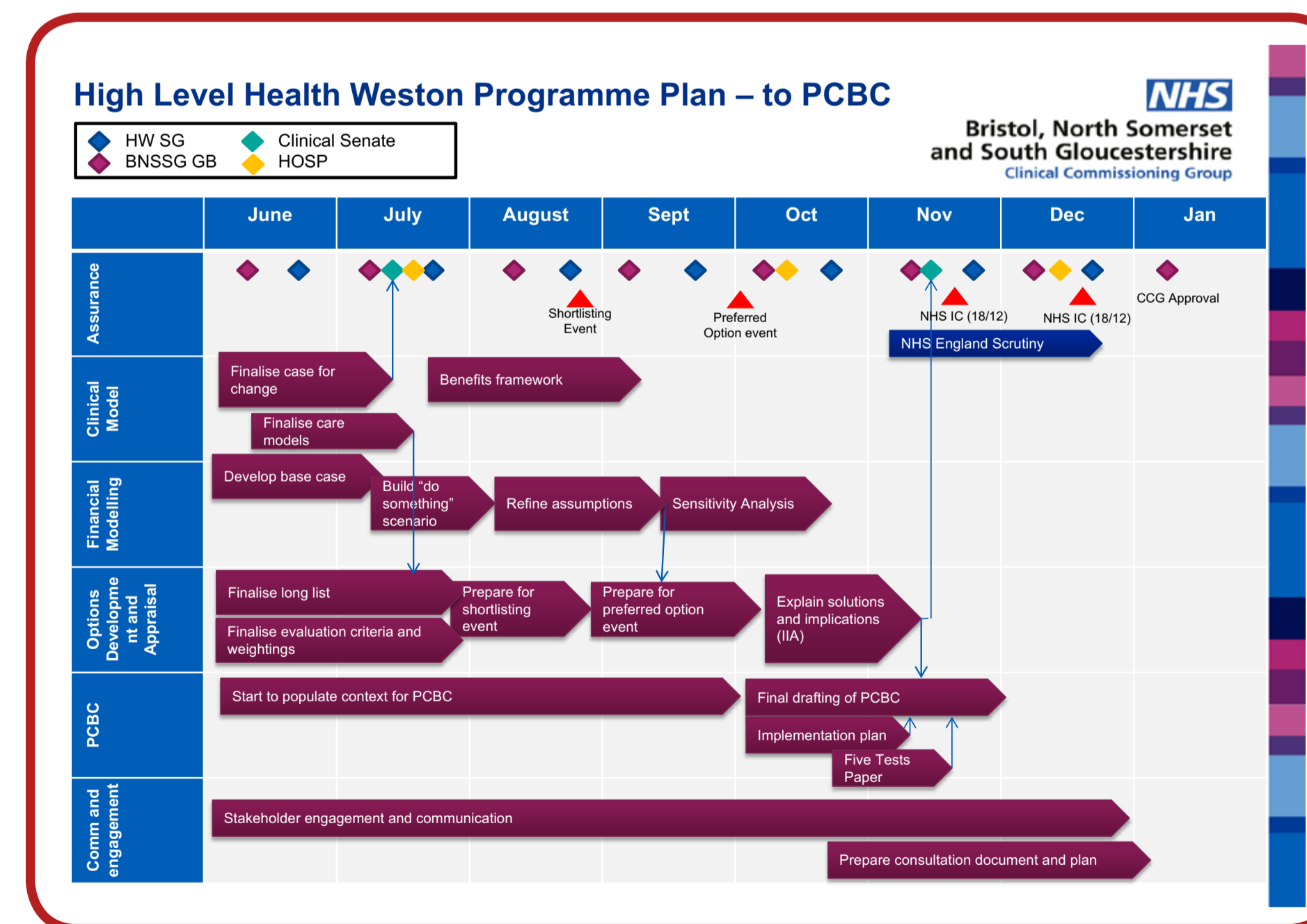


We have developed a high level road map of the stages we need to go through from now until a final decision can be made on proposals for service change.

What is a Pre-Consultation Business Case

Where formal consultation is required, the commissioner (CCG) needs to develop a Pre Consultation Business Case (PCBC), which must be approved by NHS England. A PCBC must provide the evidence that NHS England's tests for service change have been addressed, clearly setting out the process for developing proposals for change and their individual and inter relational implications in terms of clinical and financial sustainability. A PCBC will be expected to set out clearly how preferred options have been developed and appraised and give assurance on the system's ability to implement changes, if agreed. Once approved, formal public consultation can commence.

The immediate priority is to work with our clinical leaders and other key stakeholders to finalise the model of care and options capable of securing a clinically and financially sustainable model of care and to draw this work together in a pre-consultation business case.



We will also be making sure that all of the opportunities generated through the co-design work, which are not material to the PCBC are progressed.

