

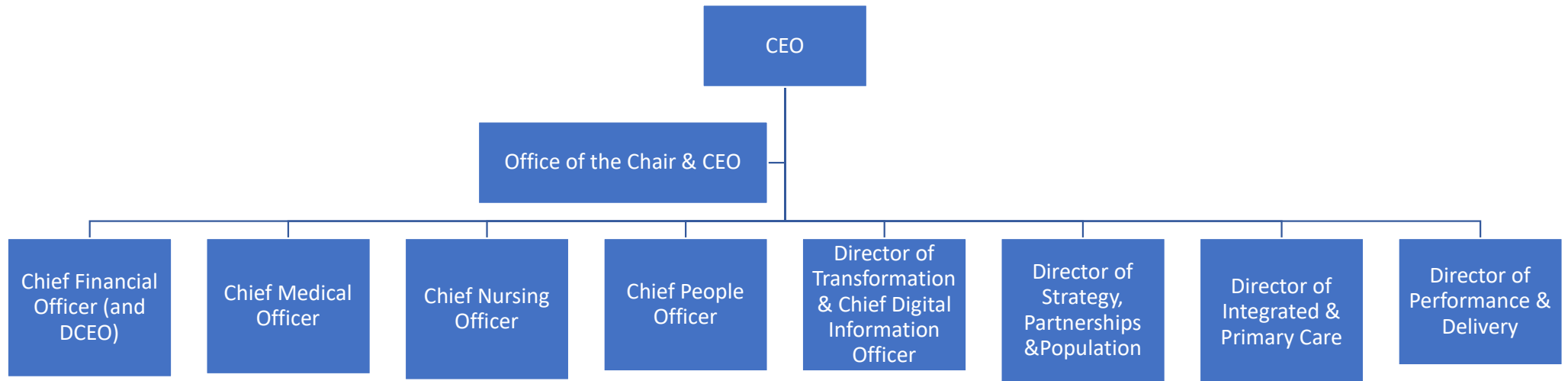
Reference: FOI.ICB-2223/033

Subject: ICB Structure Chart

I can confirm that the ICB does hold some of the information requested; please see responses below:

QUESTION	RESPONSE
<p>Please can you provide under the Freedom of Information Act a structure chart for the ICS/ICB inclusive of all 'Heads of Service,' 'Assistant Directors' and Directors with the full job titles and the names of individuals who hold these positions.</p> <p>Please could you also provide email addresses.</p>	<p>Bristol, North Somerset and South Gloucestershire Integrated Care Board (BNSSG ICB) does not yet have a complete structure chart, please refer to the attached ICB Executive structure. ICB staff transferred from BNSSG Clinical Commissioning Group (CCG) on 1 July 2022 and are currently working in line with the CCG structure; a copy of the CCG staff structure is attached.</p> <p>Executive recruitment is underway, which will inform the future organisational structure. Current information on appointed executives is published and updated here: https://bnssg.icb.nhs.uk/about-us/our-integrated-care-board/</p>

The information provided in this response is accurate as of 12 August 2022 and has been approved for release by Jon Lund, Deputy Chief Finance Officer for NHS Bristol, North Somerset and South Gloucestershire ICB.



Structure Chart

(Excludes Non Establishment Posts)

Can be shared externally.

Published Date: August 2022

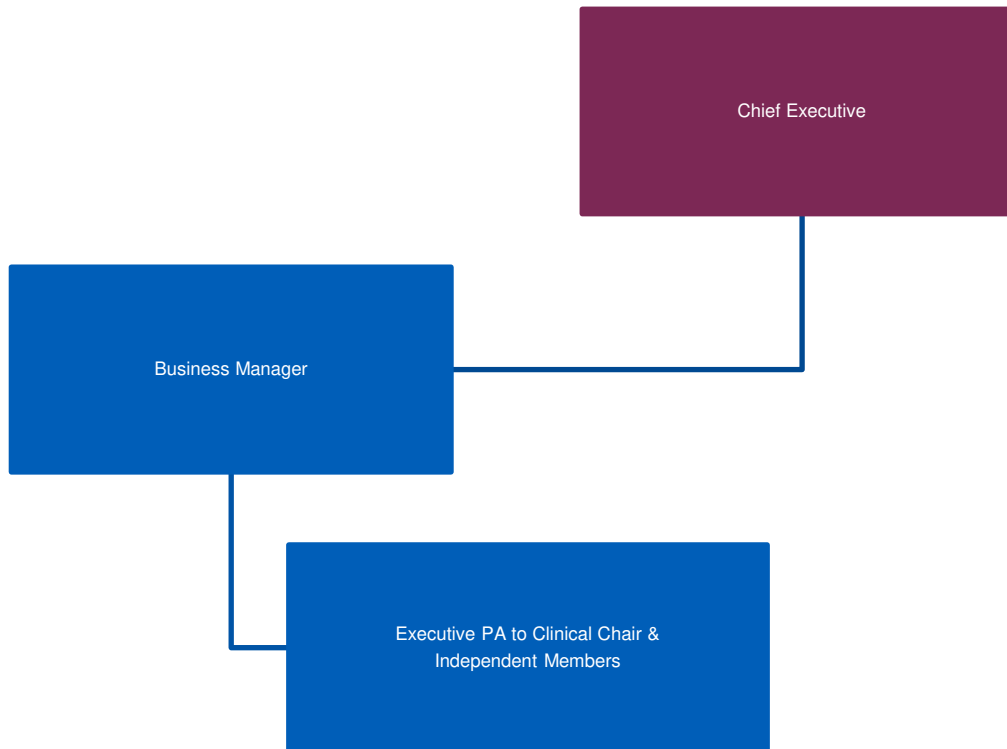
Master document held by Corporate Services

Email: bnssg.corporate@nhs.net for any amendments

Chief Executive



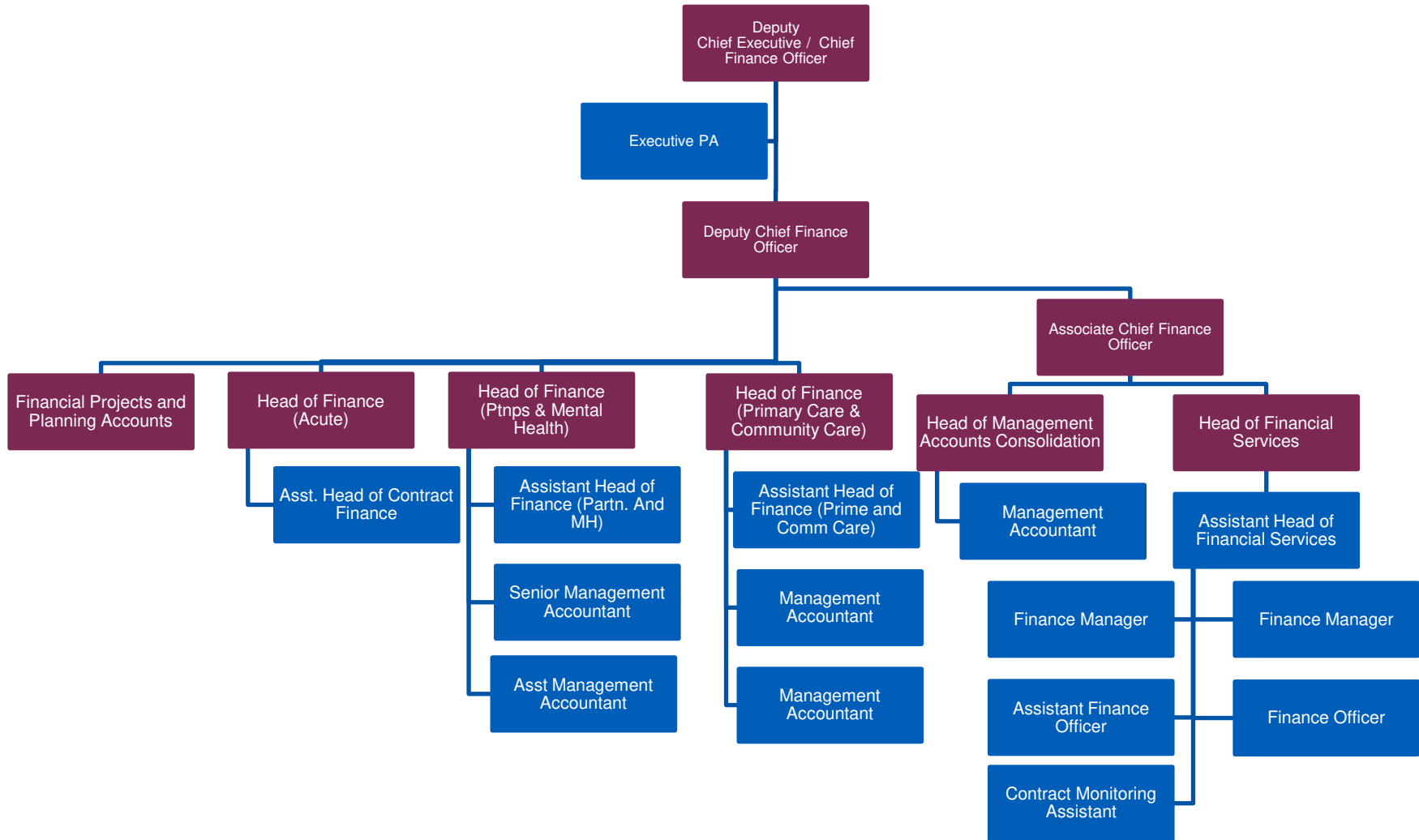
**Bristol, North Somerset
and South Gloucestershire**
Clinical Commissioning Group



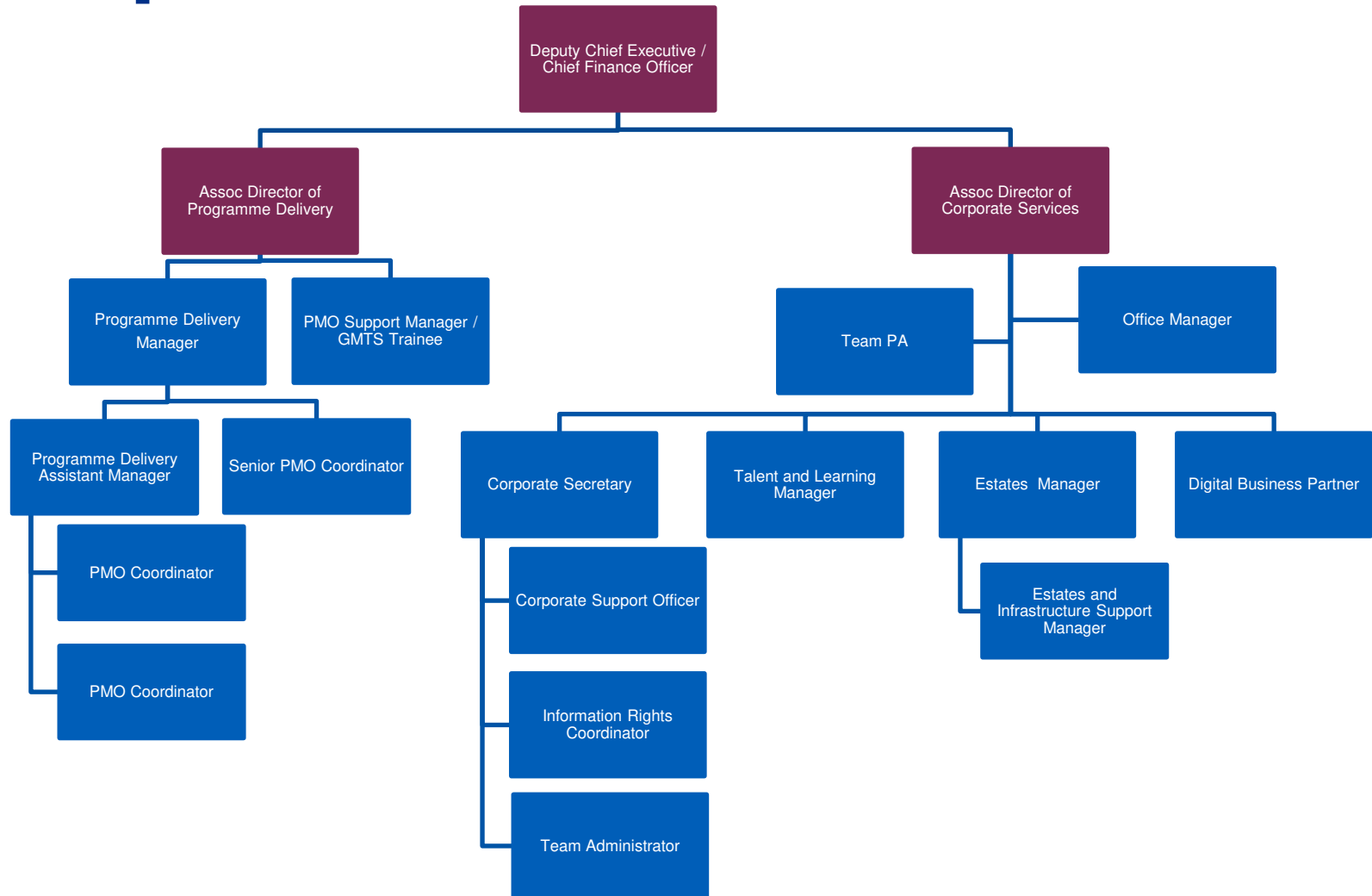
Finance Team



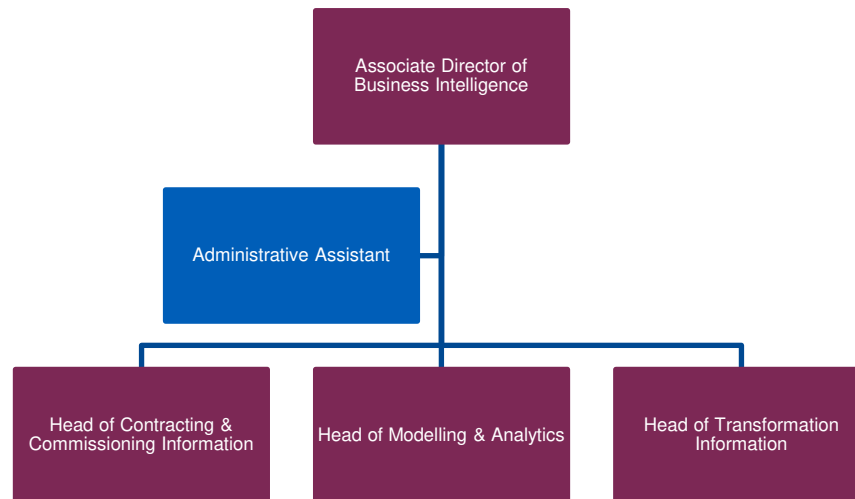
**Bristol, North Somerset
and South Gloucestershire**
Clinical Commissioning Group



Finance – PMO / Corporate Services



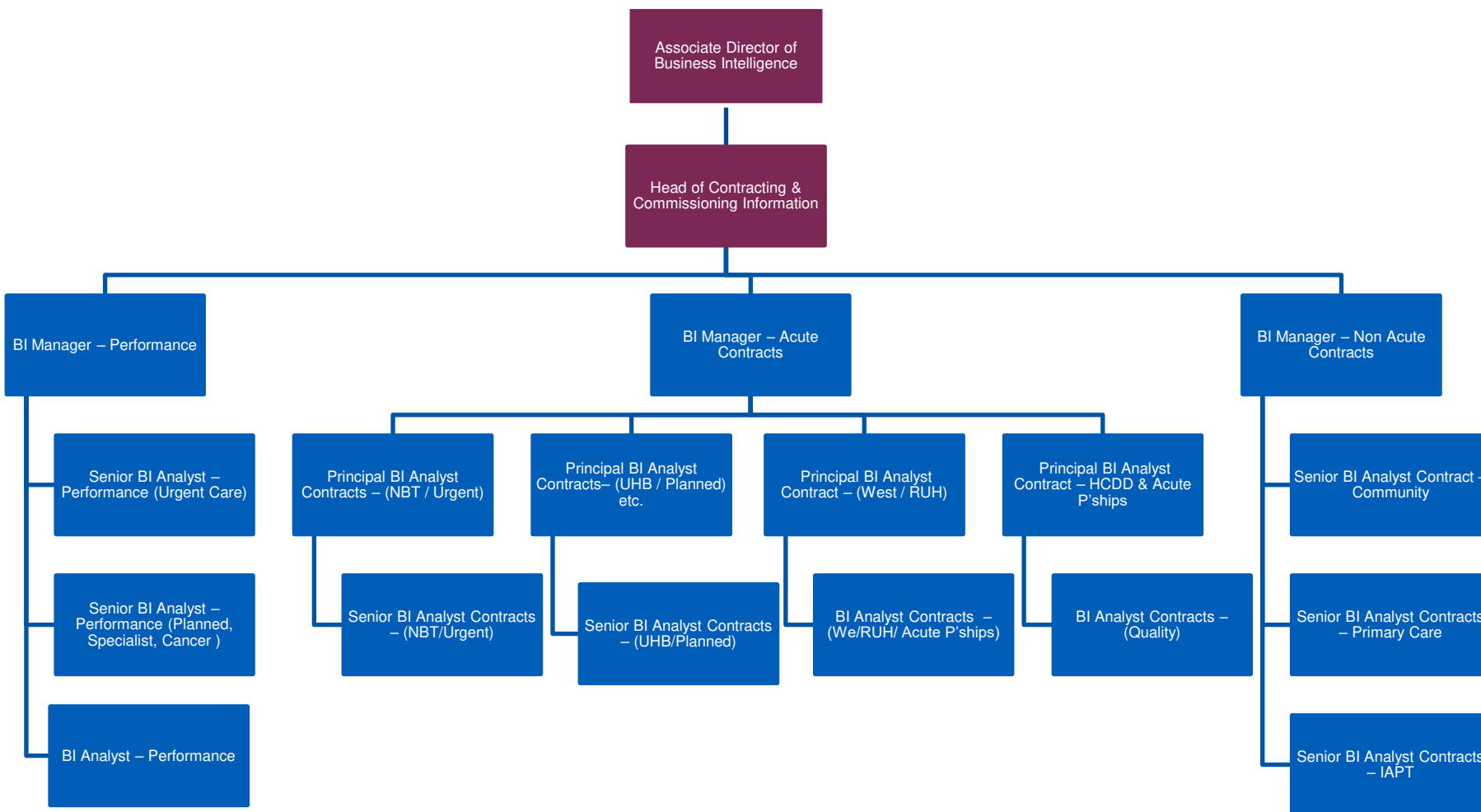
BI – Management



BI – Contract & Commissioning Team



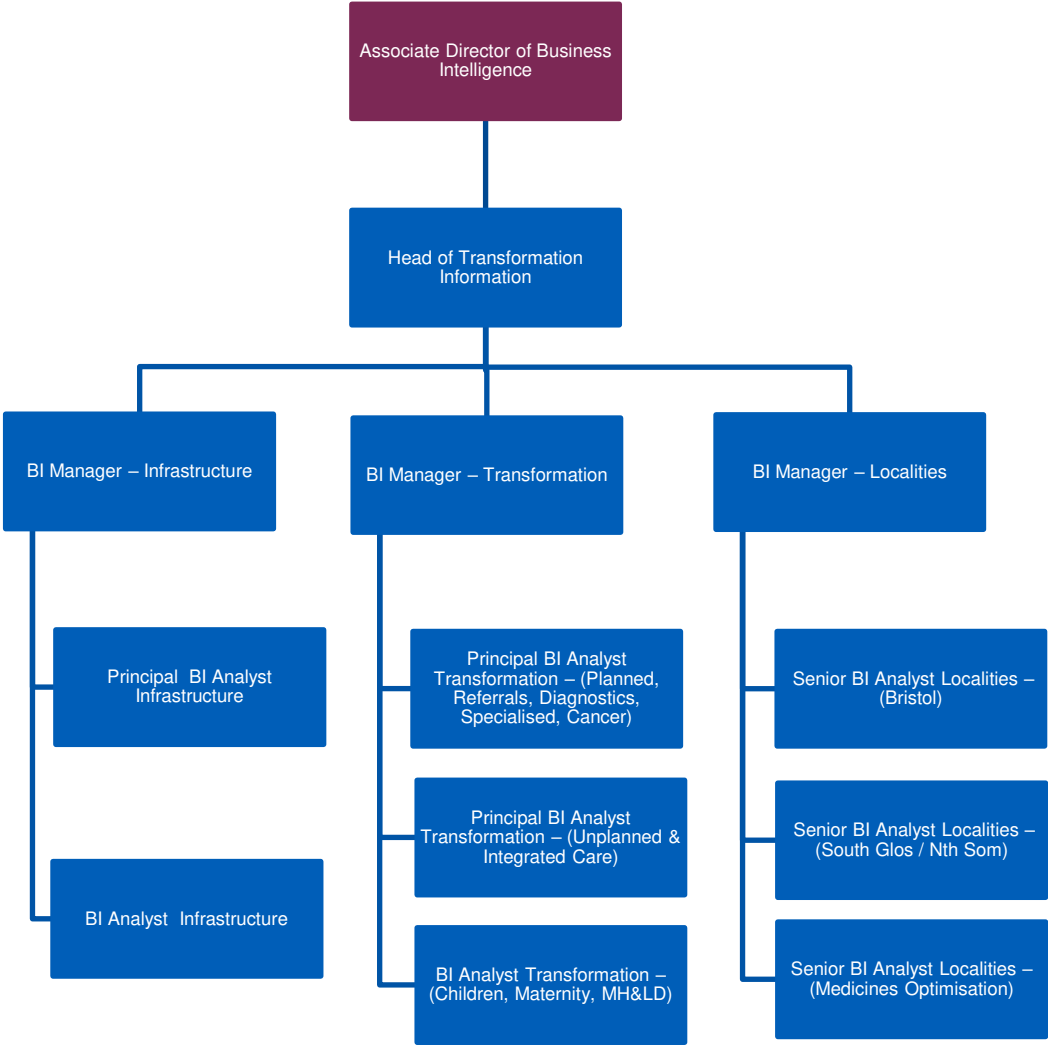
Bristol, North Somerset
and South Gloucestershire
Clinical Commissioning Group



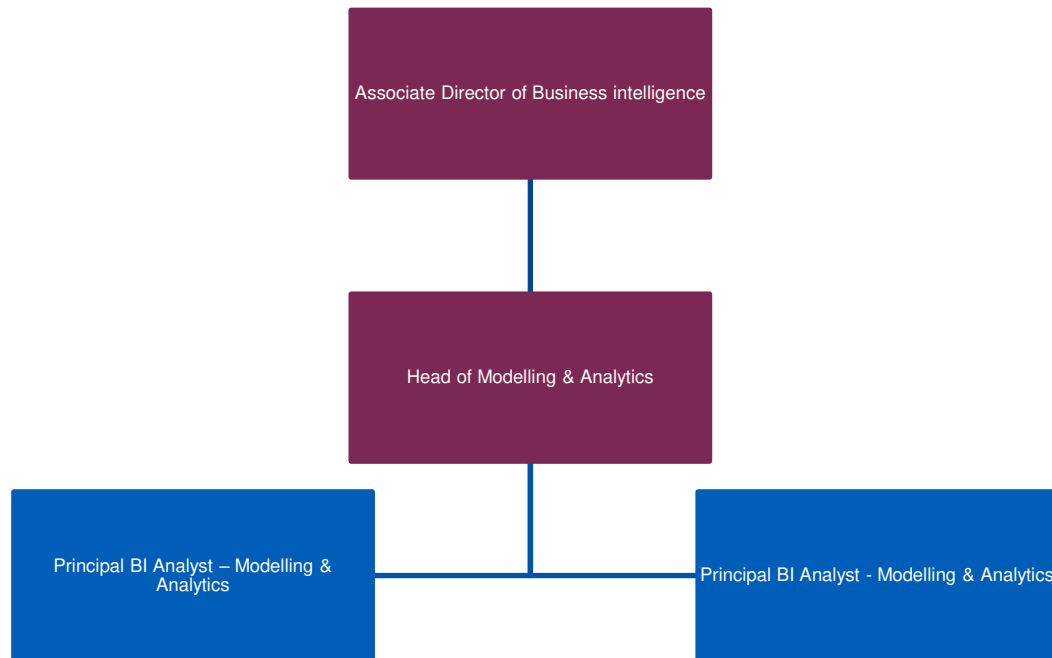
BI - Transformation



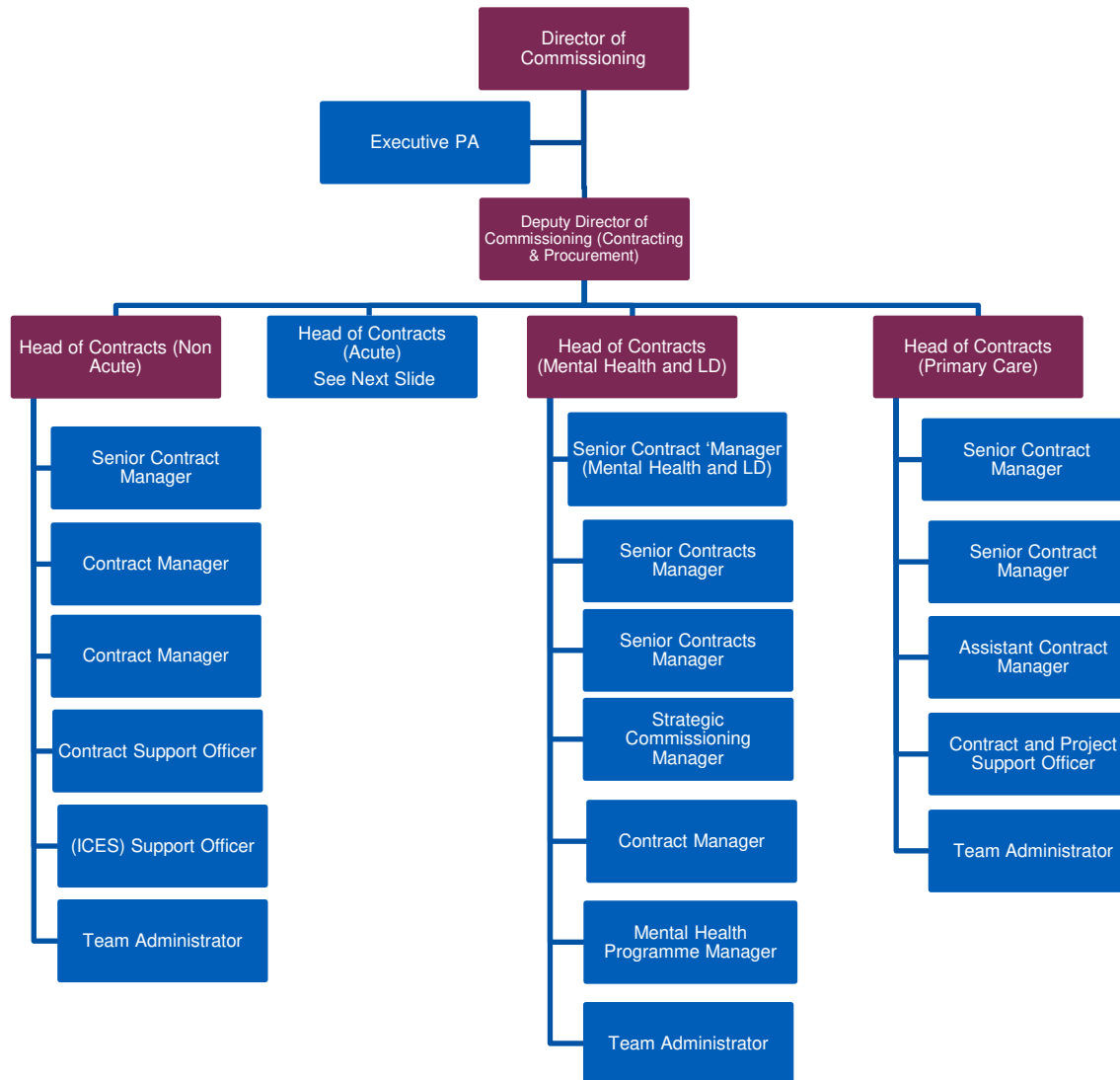
Bristol, North Somerset
and South Gloucestershire
Clinical Commissioning Group



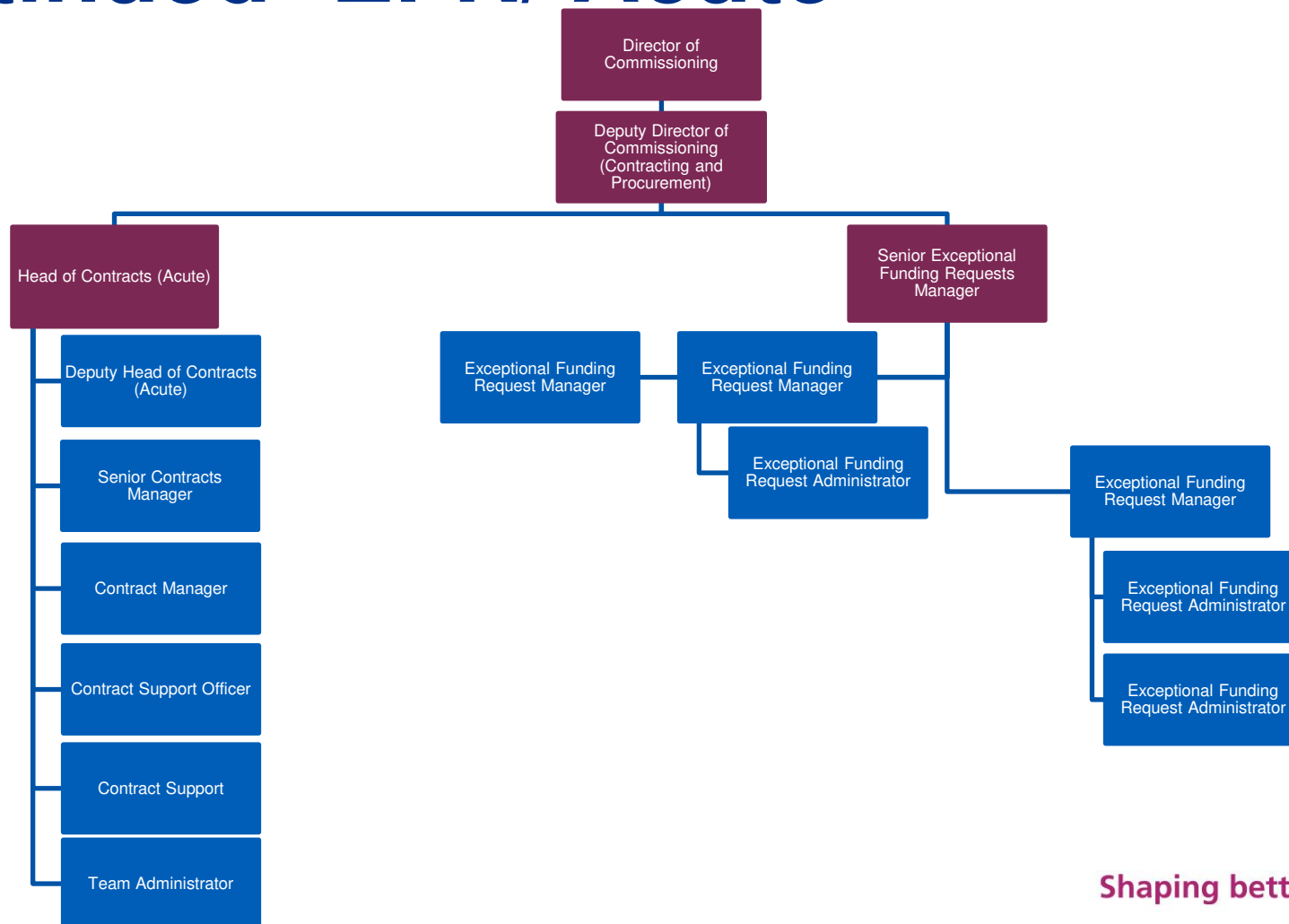
BI – Modelling & Analytics Team



Commissioning Contract & Procurement



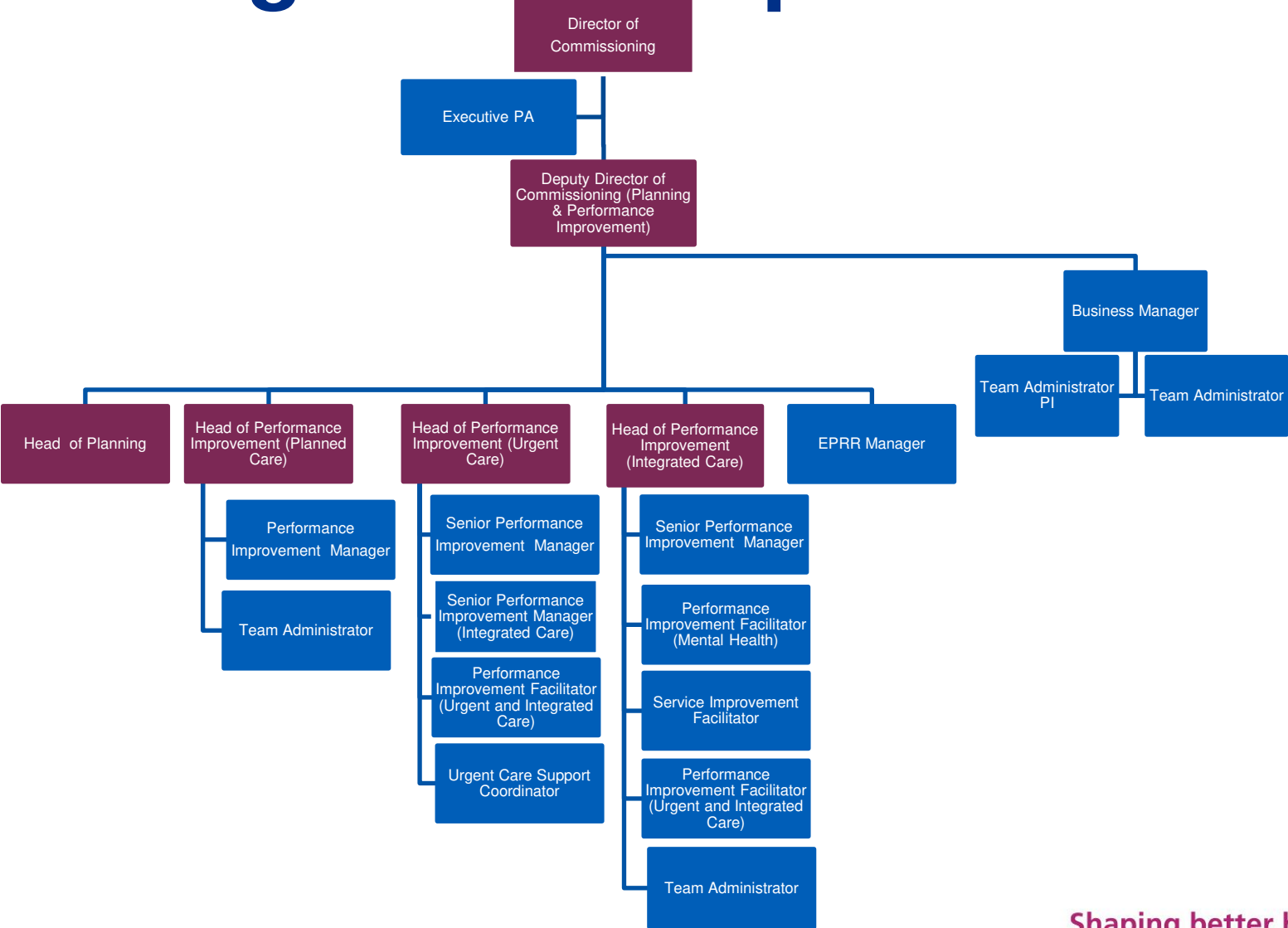
Commissioning Contract & Procurement Continued- EFR/ Acute



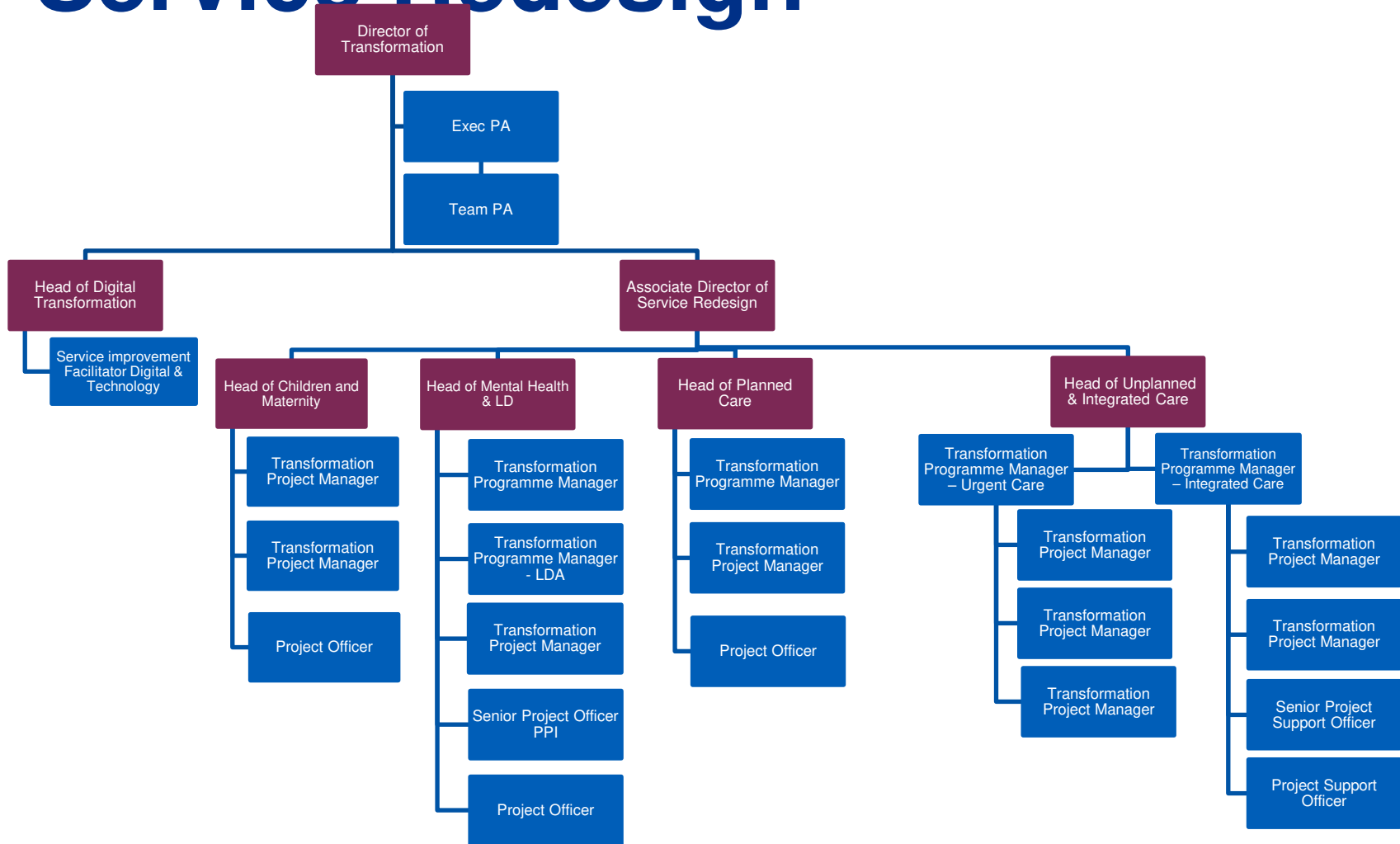
Commissioning Planning & Perf. Imp.



**Bristol, North Somerset
and South Gloucestershire**
Clinical Commissioning Group



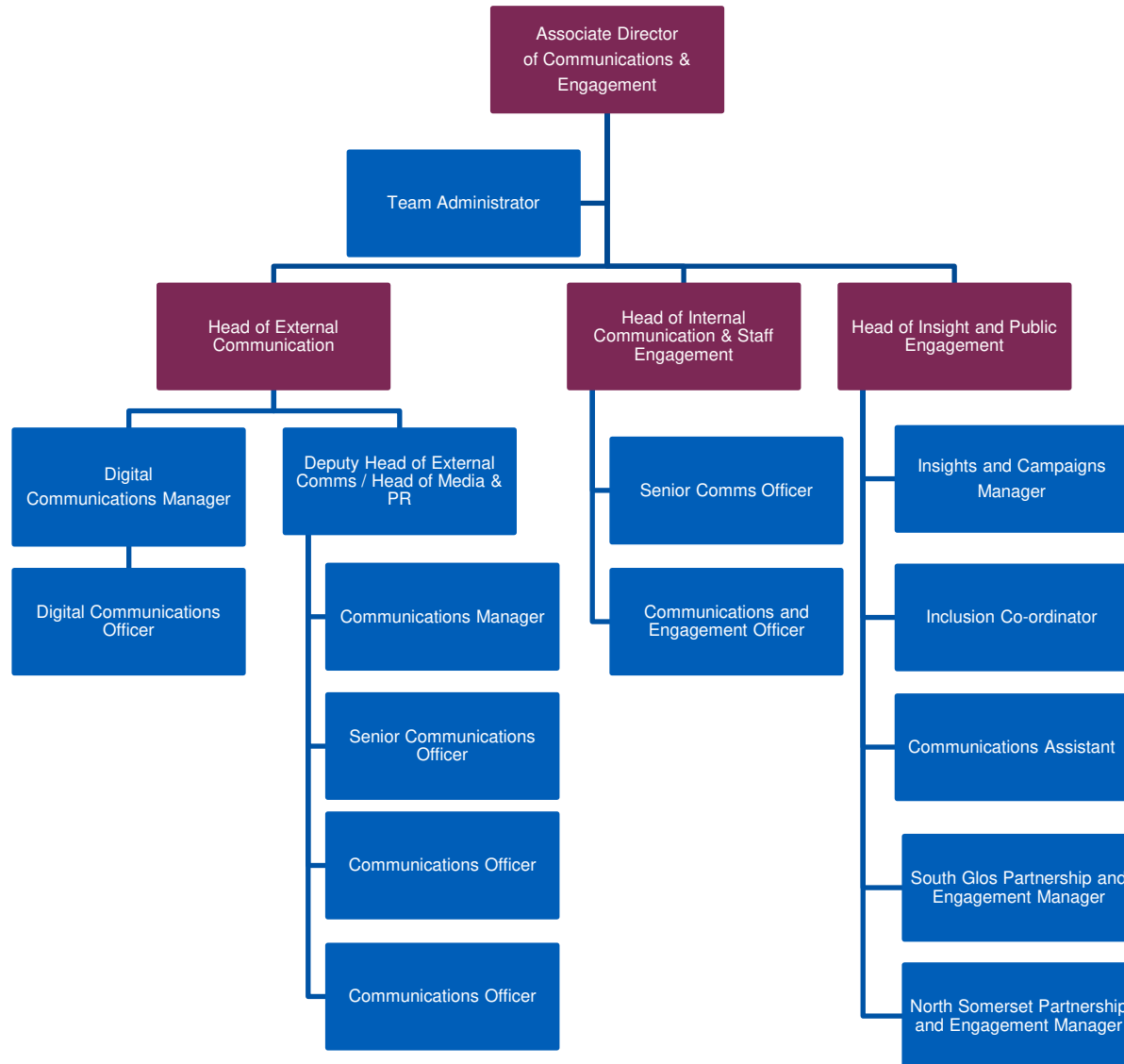
Transformation Service Redesign



Transformation Comms & Engagement



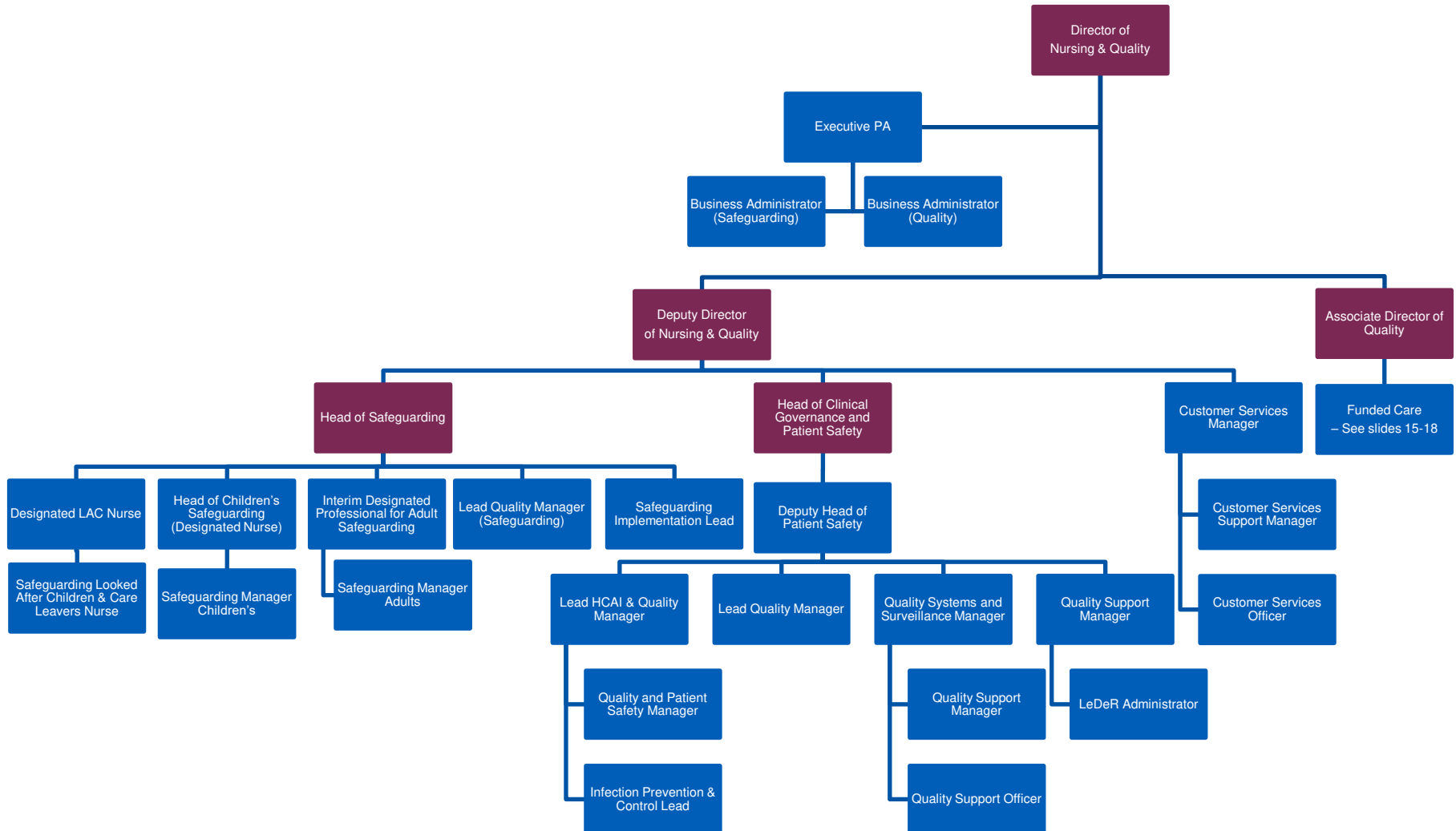
Bristol, North Somerset
and South Gloucestershire
Clinical Commissioning Group



Nursing & Quality



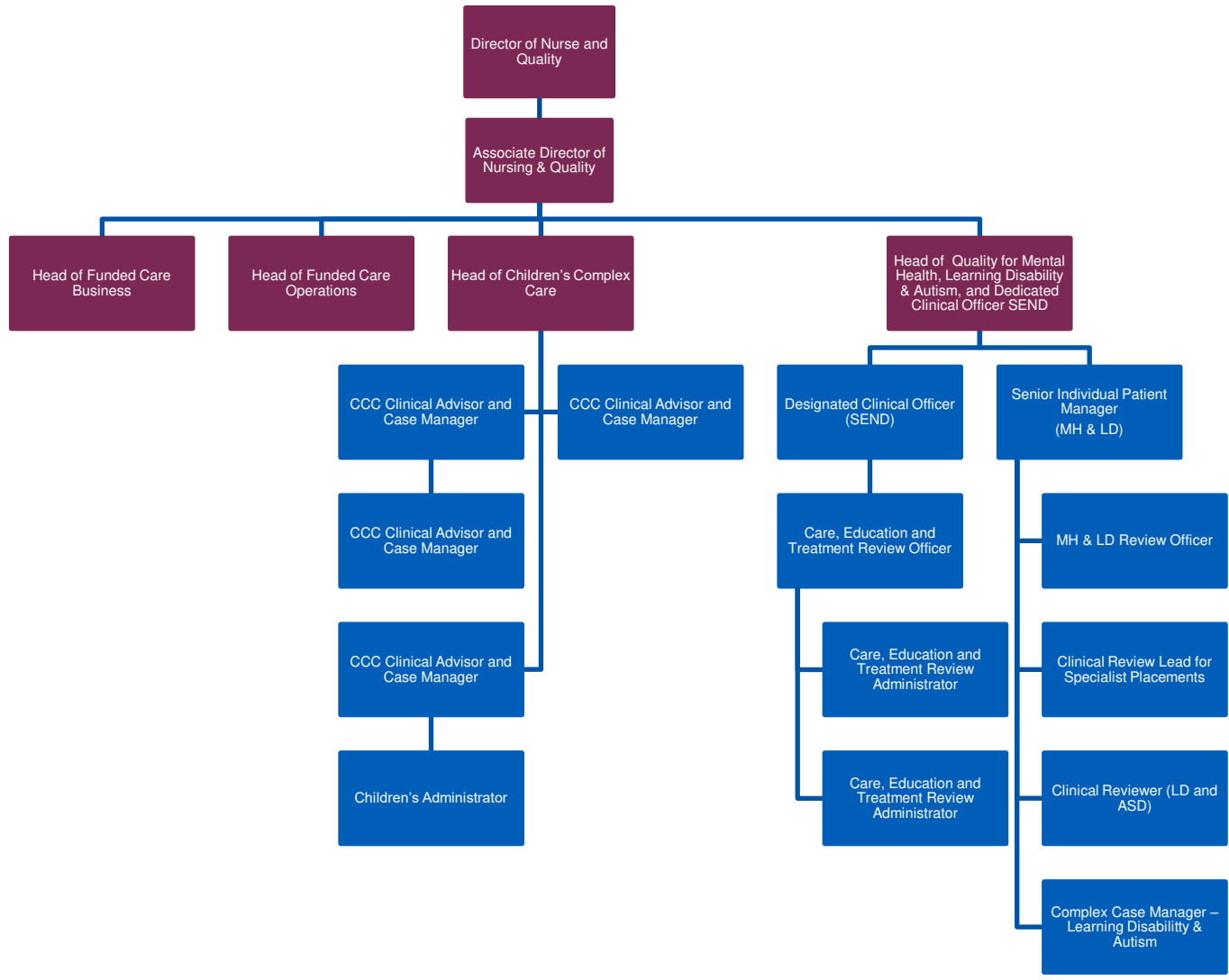
**Bristol, North Somerset
and South Gloucestershire**
Clinical Commissioning Group



Nursing & Quality - Funded Care



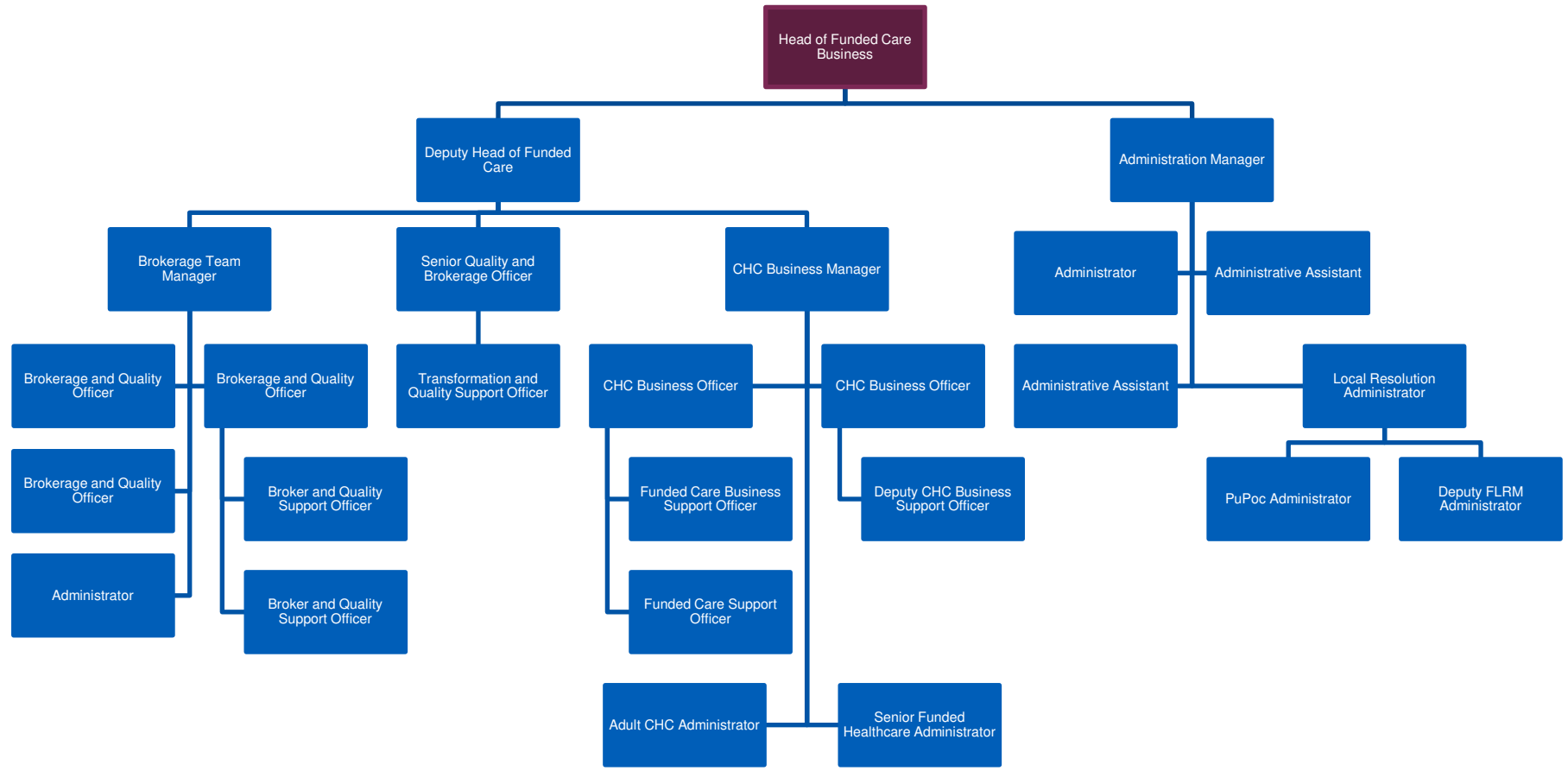
**Bristol, North Somerset
and South Gloucestershire**
Clinical Commissioning Group



Nursing & Quality Funded Care - Continued



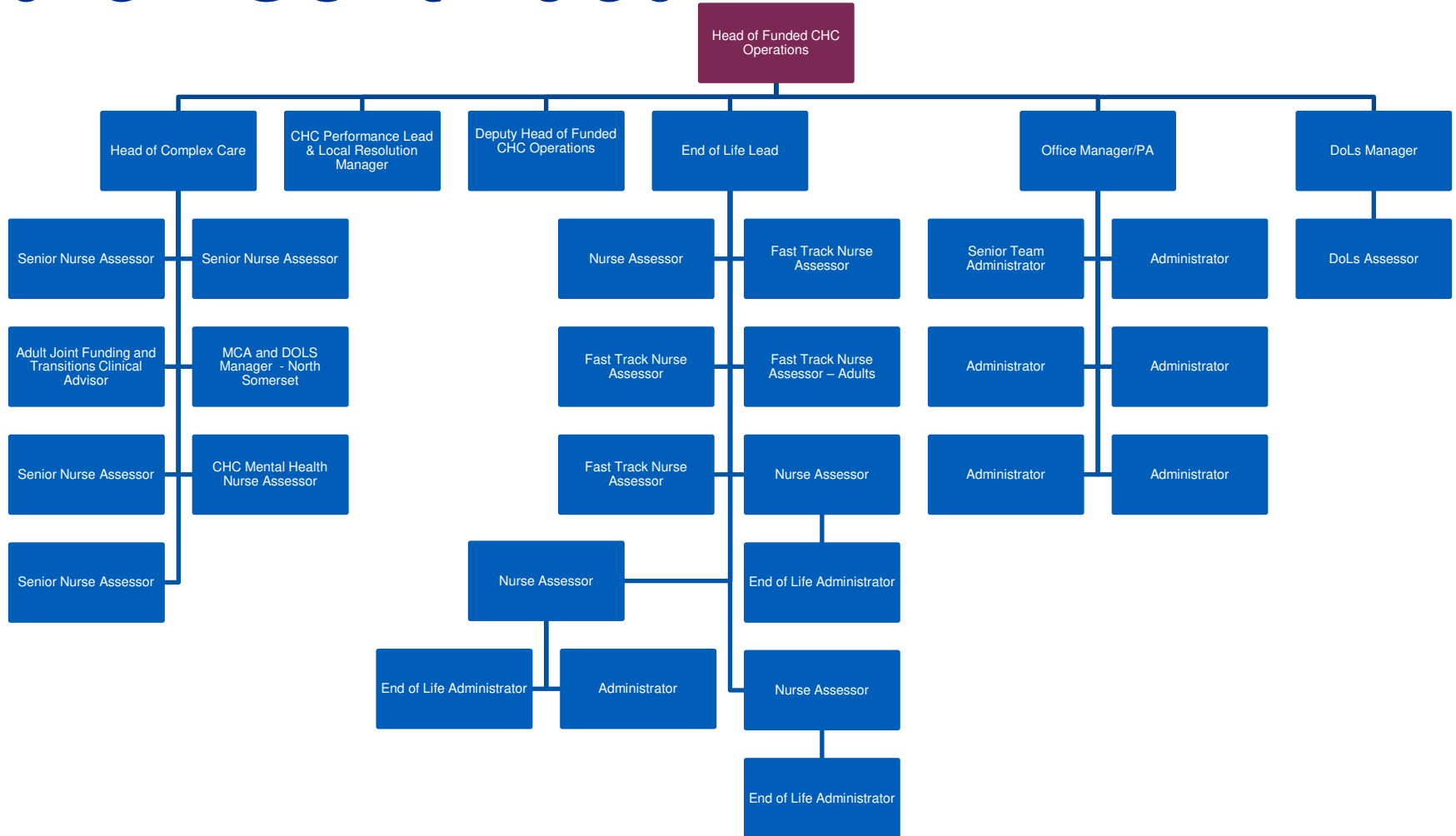
Bristol, North Somerset
and South Gloucestershire
Clinical Commissioning Group



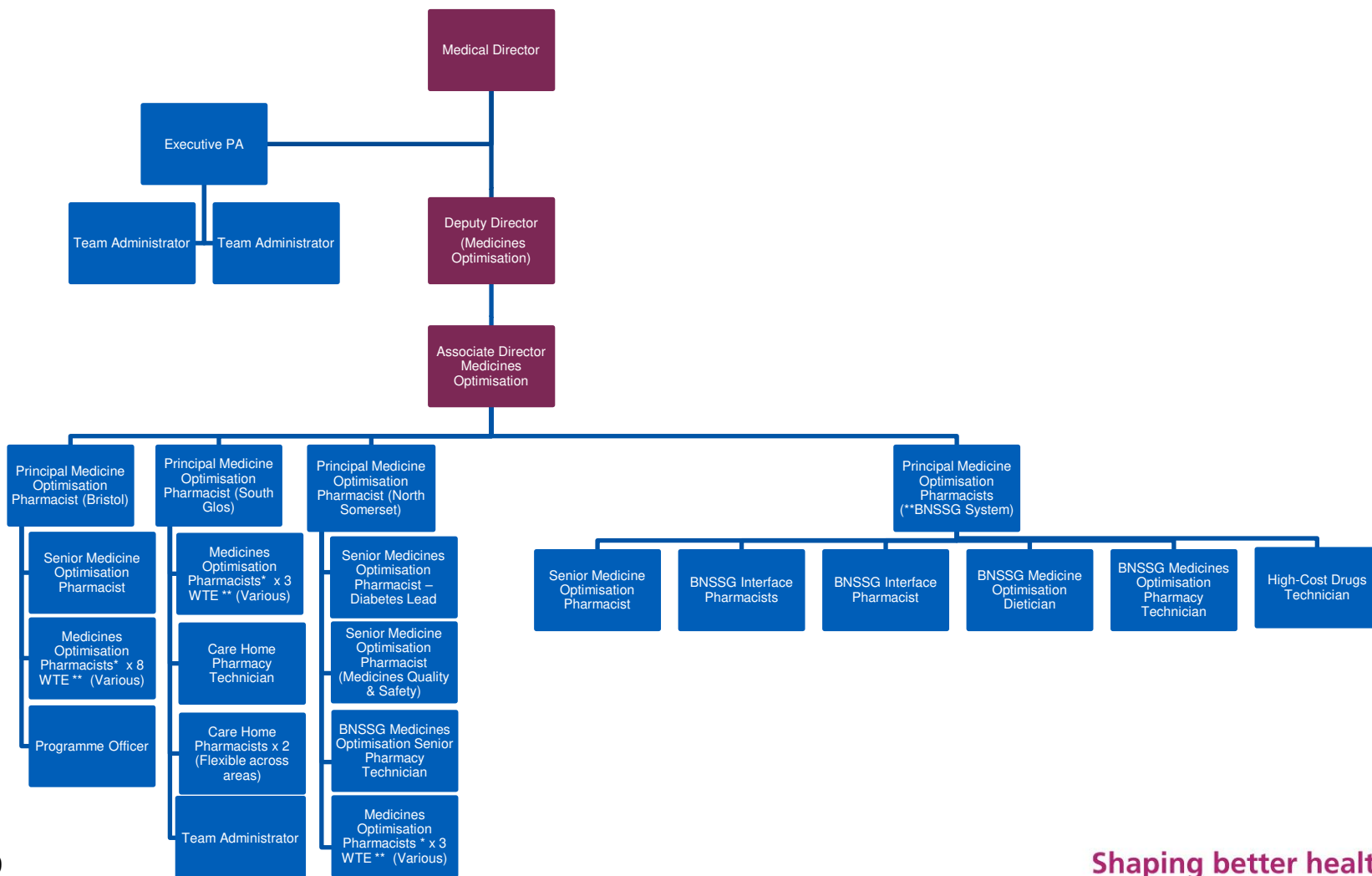
Nursing & Quality Funded Care - Continued



Bristol, North Somerset
and South Gloucestershire
Clinical Commissioning Group



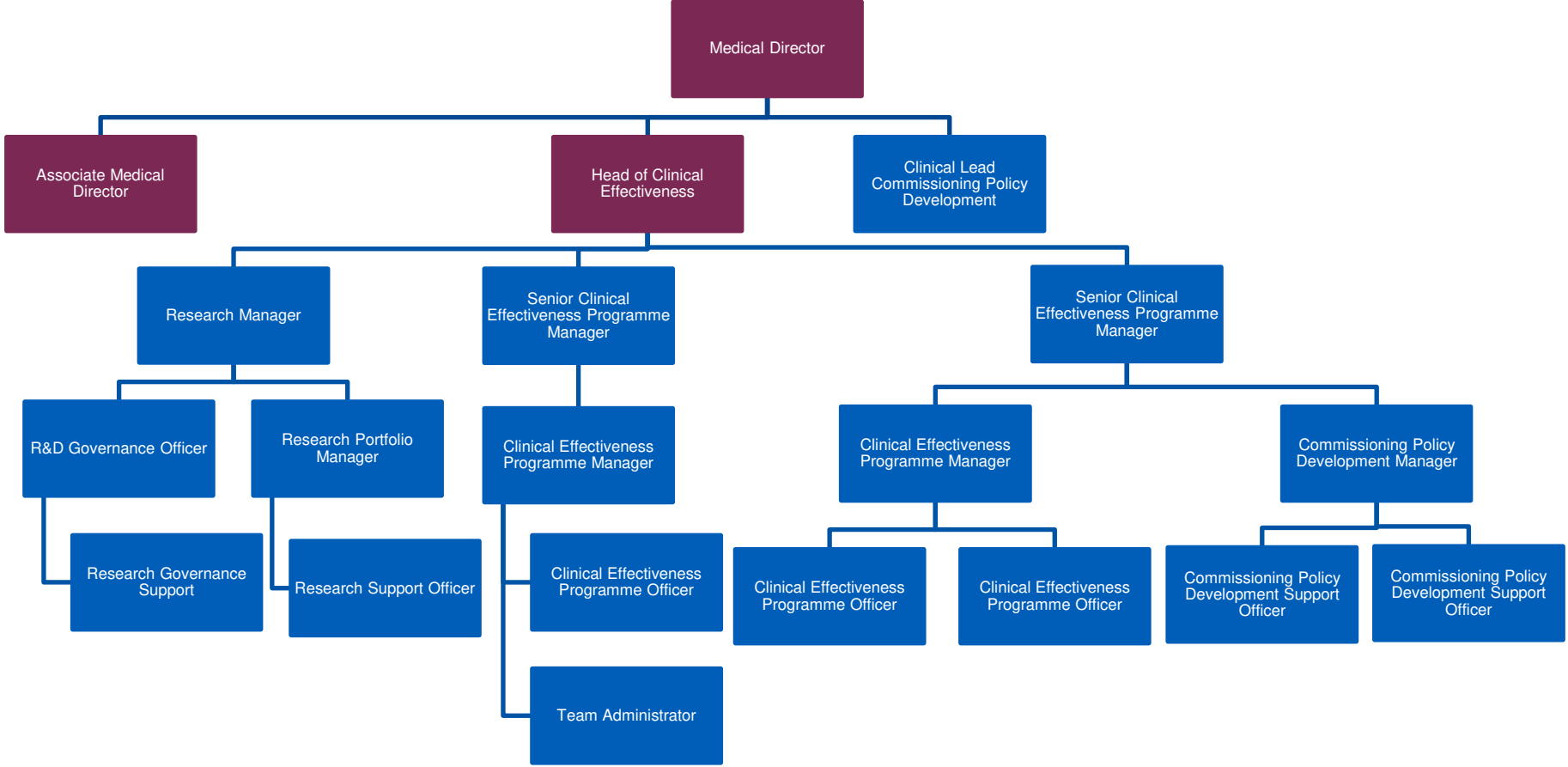
Medical Directorate Clinical Effectiveness



Medical Directorate- Clinical Effectiveness and Research



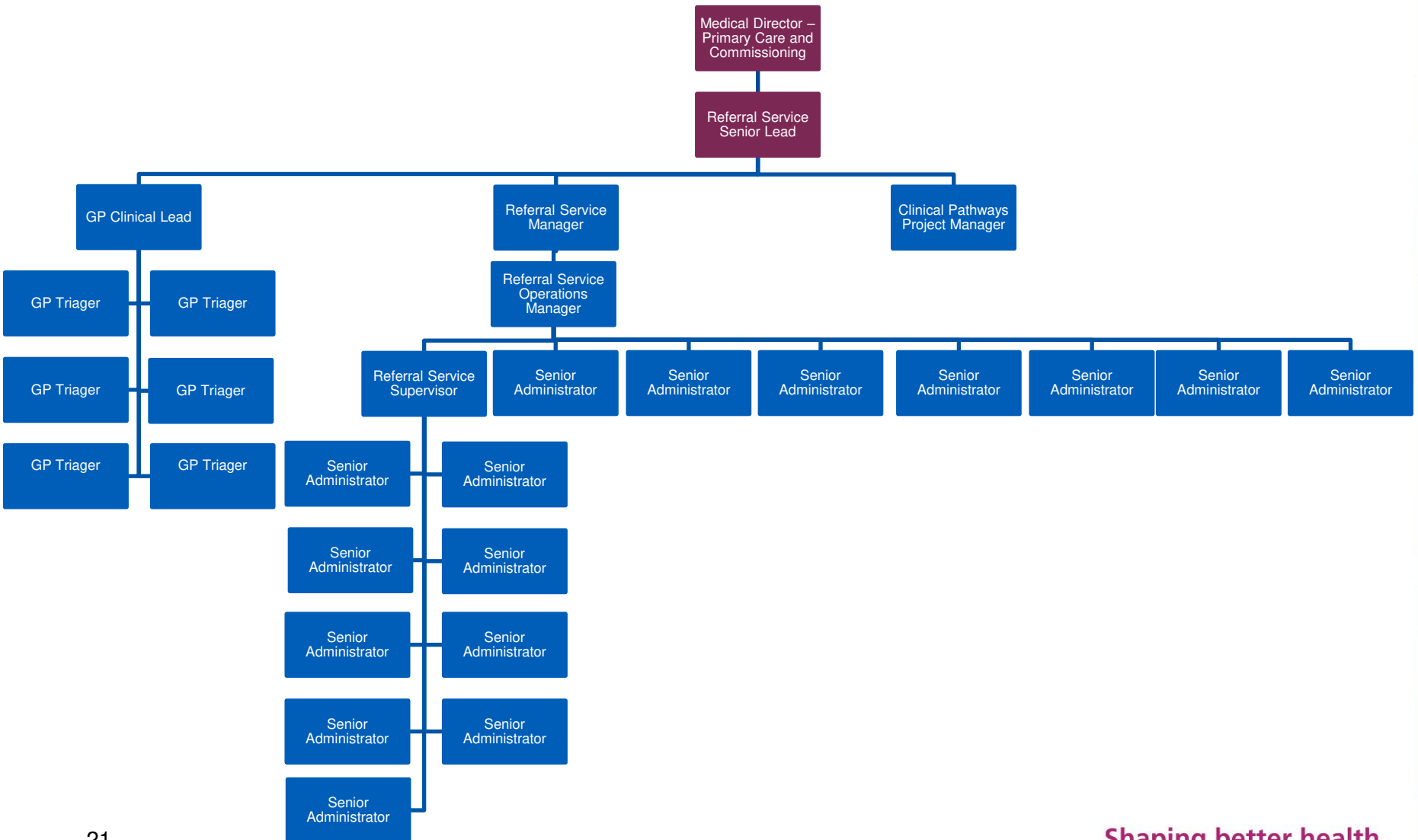
Bristol, North Somerset and South Gloucestershire
Clinical Commissioning Group



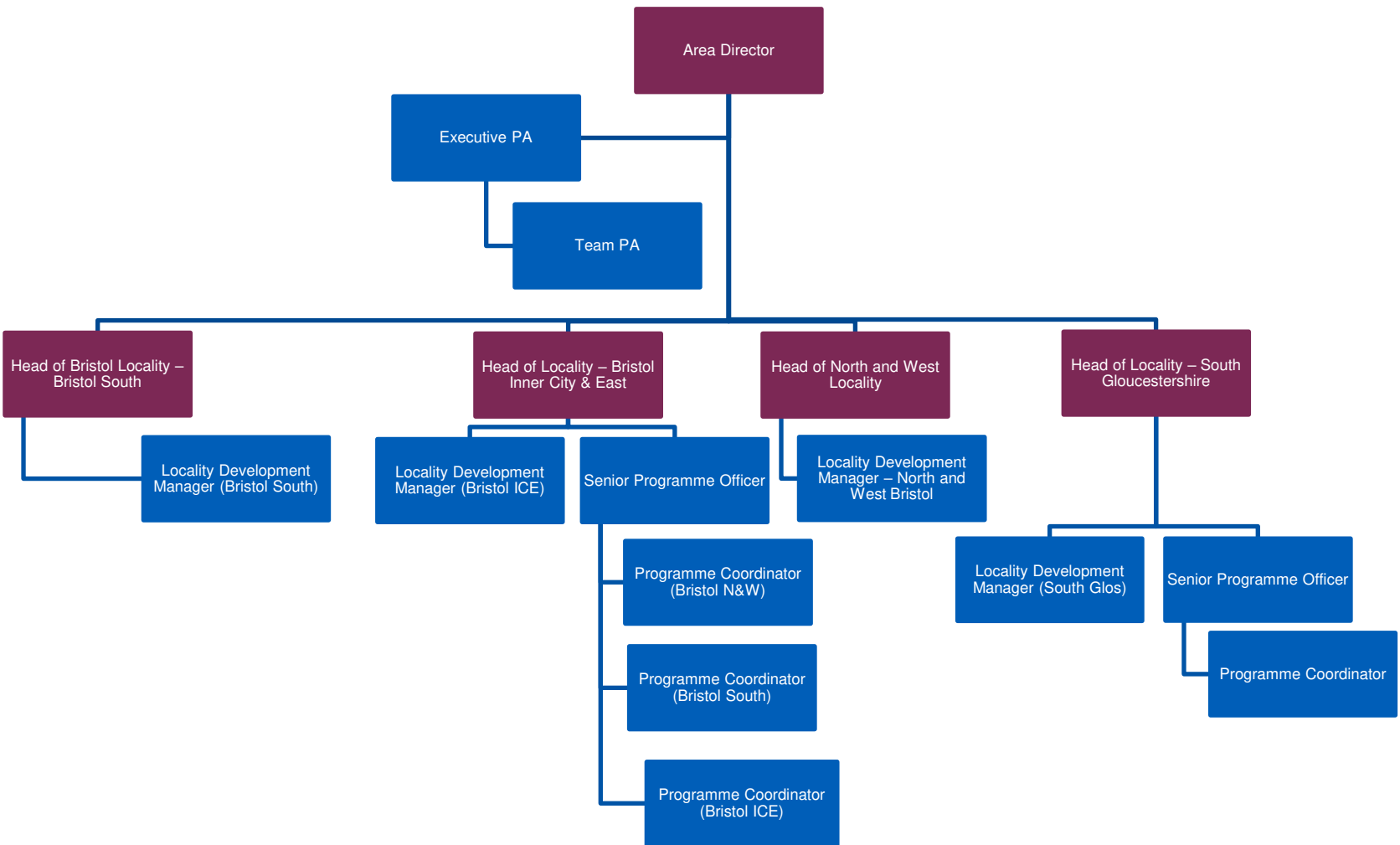
Primary Care and Comm. Referral Service



Bristol, North Somerset
and South Gloucestershire
Clinical Commissioning Group



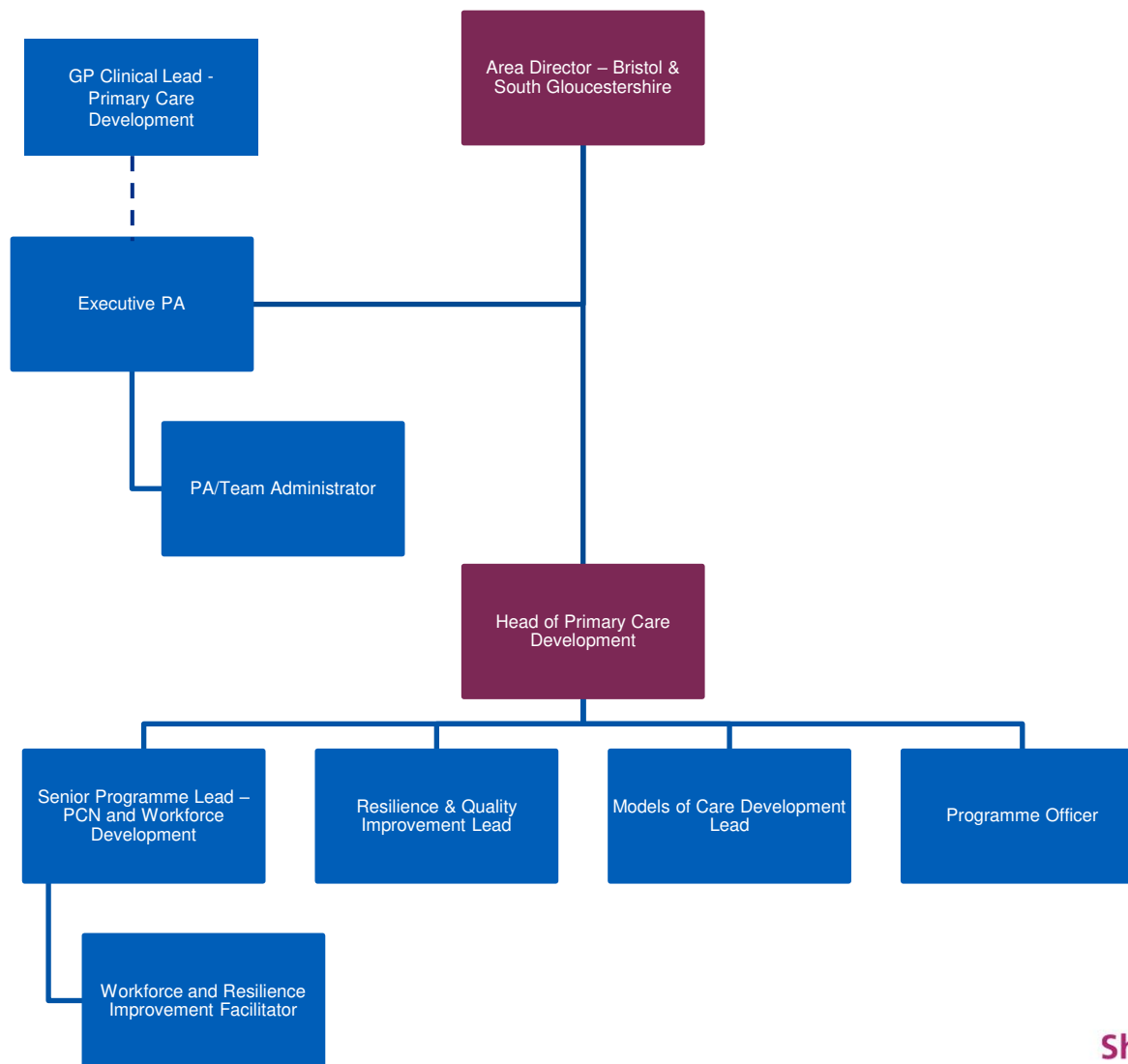
Area Directorate – Bristol & South Gloucestershire



Area Directorate – Bristol & South Gloucestershire



Bristol, North Somerset
and South Gloucestershire
Clinical Commissioning Group



Area Directorate – North Somerset



Bristol, North Somerset
and South Gloucestershire
Clinical Commissioning Group

