

**Reference:** FOI.ICB-2223/038

**Subject:** IT and Digital Teams Structure

*I can confirm that the ICB does hold some of the information requested; please see responses below:*

QUESTION	RESPONSE
<p>Could you please send me the updated IT and Digital teams organogram for the organisation including names please.</p>	<p>Rob Hayday (<a href="mailto:robert.hayday@nhs.net">robert.hayday@nhs.net</a>), Associate Director of Corporate Services, manages the Digital Business Partner role for Bristol, North Somerset and South Gloucestershire Integrated Care Board (BNSSG ICB).</p> <p>Other IT resources are outsourced to South Central and West Commissioning Support Unit (SCWCSU). You can contact SCW CSU using the following email address: <a href="mailto:SCWCSU.FOI@nhs.net">SCWCSU.FOI@nhs.net</a></p> <p>In addition, the ICB has filled its Director of Transformation and Chief Digital Officer post as part of the organisational development since the inception of the ICB on 1 July 2022. Deborah El-Sayed holds this post with team members supporting her portfolio. The organogram for the ICB remains in development linked to the design of new staff structures. Staff remain in the posts assigned to them in the CCG, the ICB's predecessor organisation, a structure chart is attached.</p>

***The information provided in this response is accurate as of 12 August 2022 and has been approved for release by Jon Lund, Deputy Chief Finance Officer for NHS Bristol, North Somerset and South Gloucestershire ICB.***

# Structure Chart

(Excludes Non Establishment Posts)

**Can be shared externally.**

Published Date: August 2022

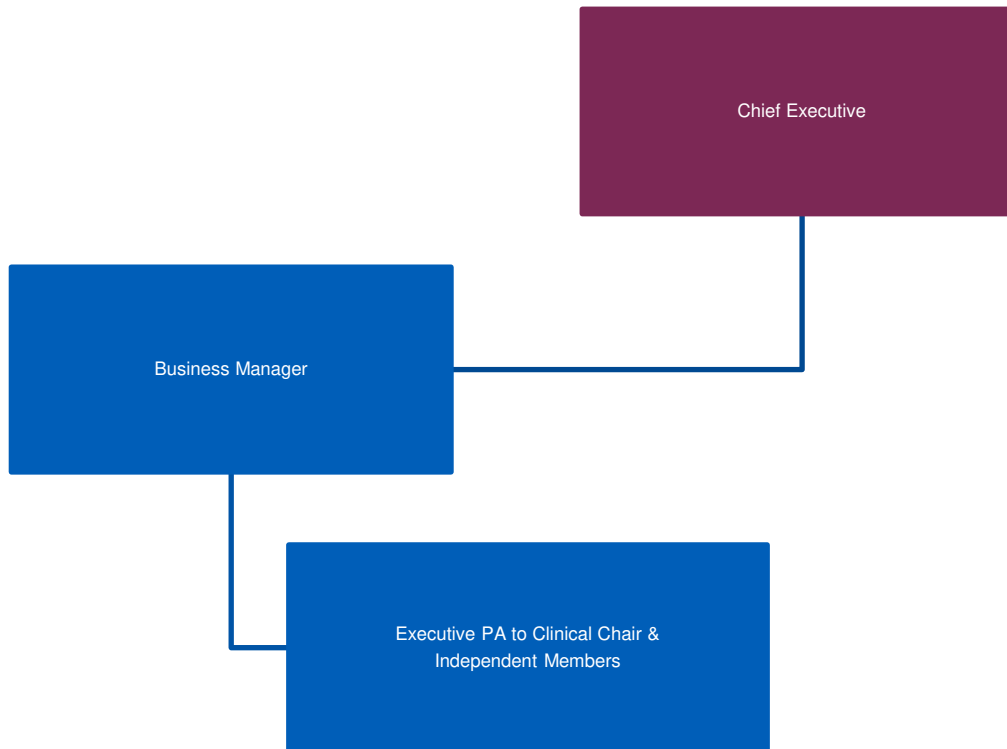
Master document held by Corporate Services

Email: [bnssg.corporate@nhs.net](mailto:bnssg.corporate@nhs.net) for any amendments

# Chief Executive



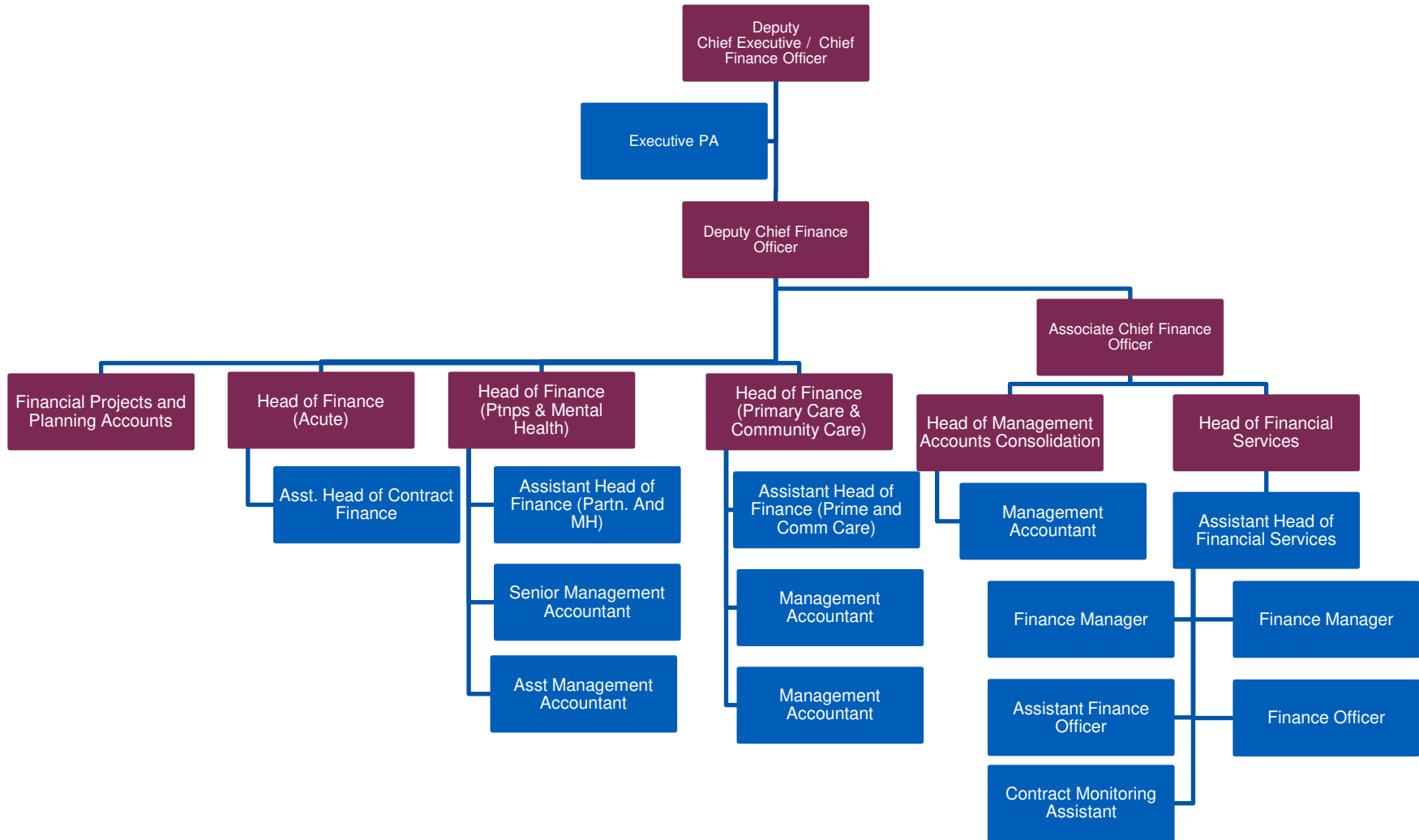
**Bristol, North Somerset  
and South Gloucestershire**  
Clinical Commissioning Group



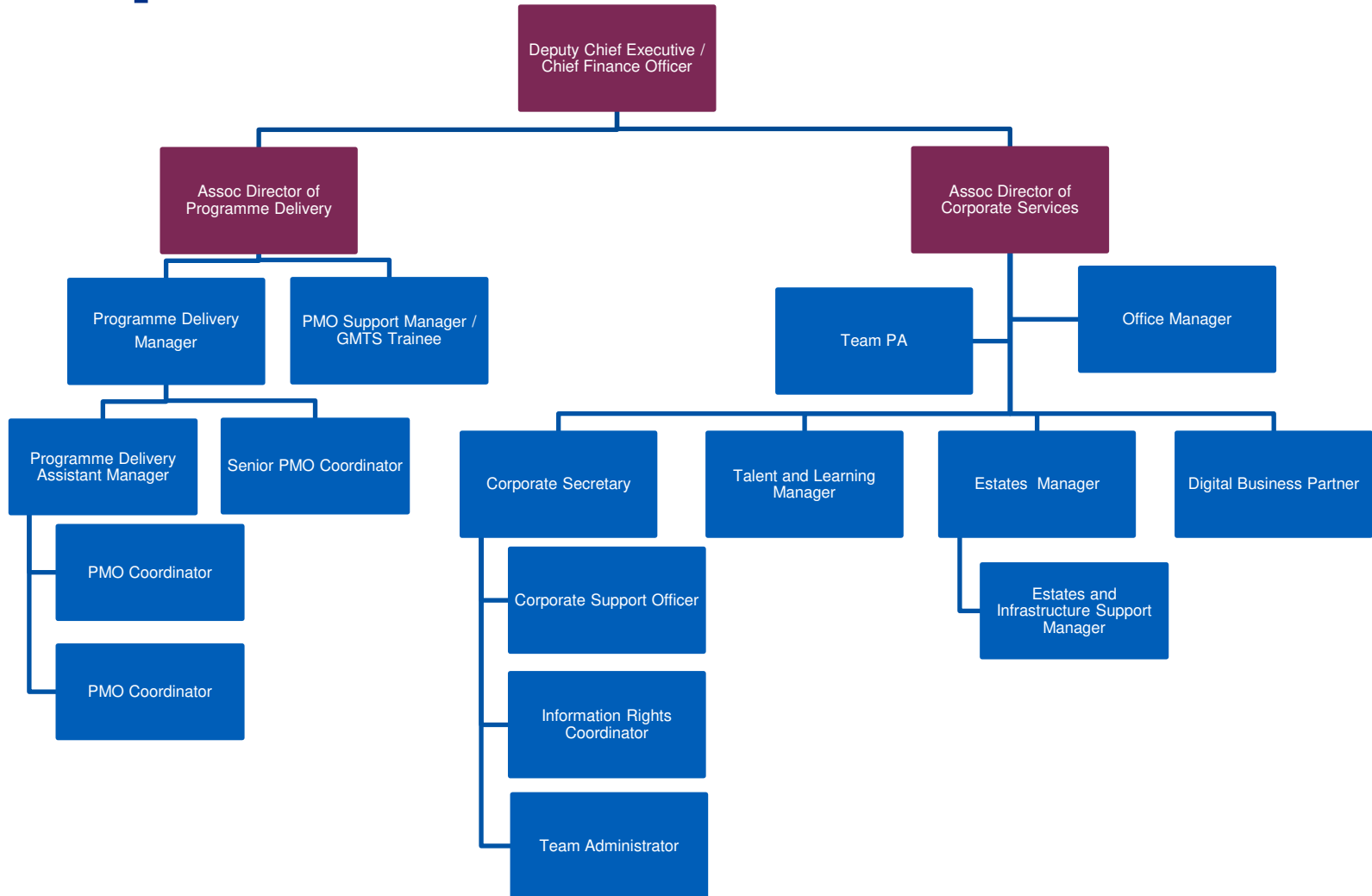
# Finance Team



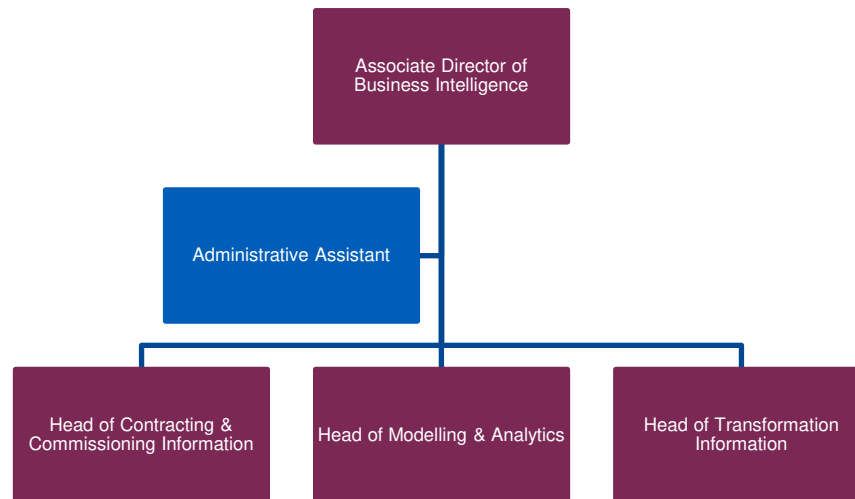
**Bristol, North Somerset  
and South Gloucestershire**  
Clinical Commissioning Group



# Finance – PMO / Corporate Services



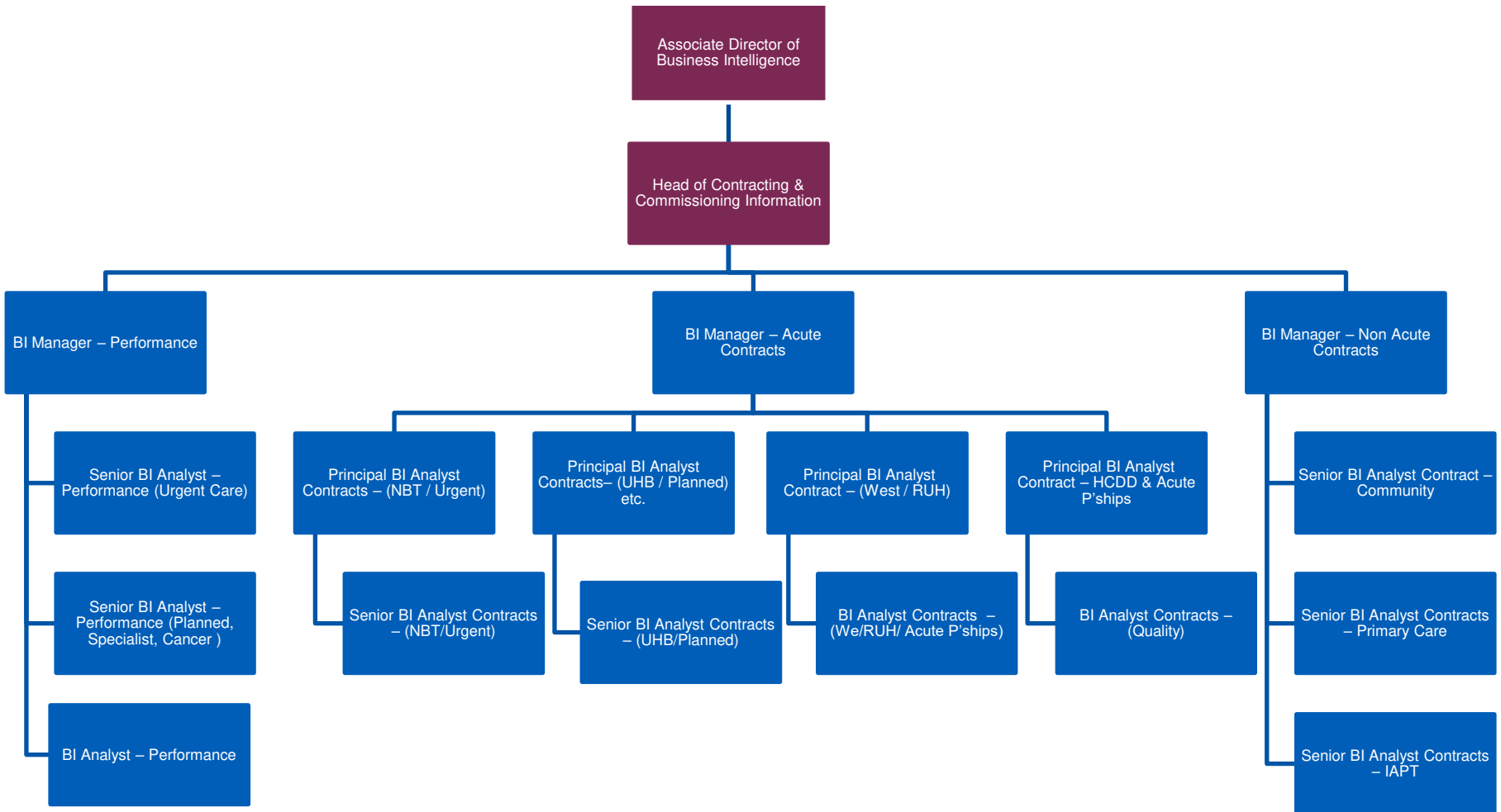
# BI – Management



# BI – Contract & Commissioning Team



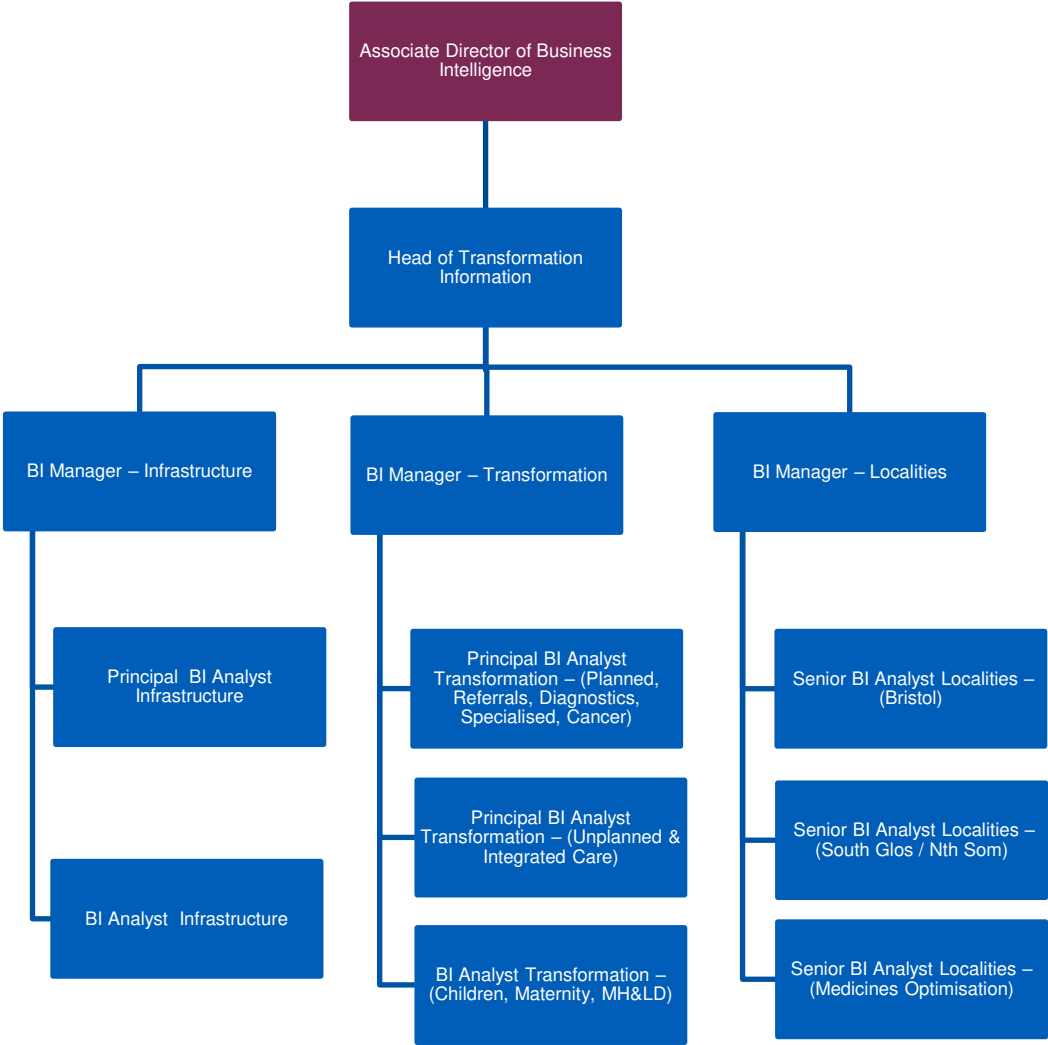
Bristol, North Somerset  
and South Gloucestershire  
Clinical Commissioning Group



# BI - Transformation

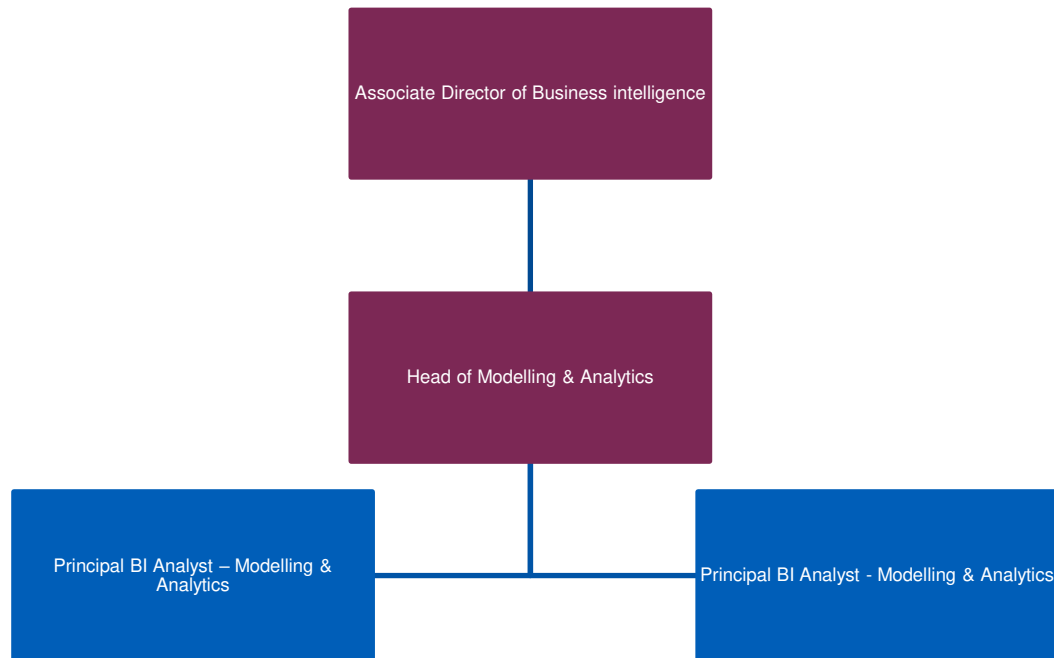


Bristol, North Somerset  
and South Gloucestershire  
Clinical Commissioning Group

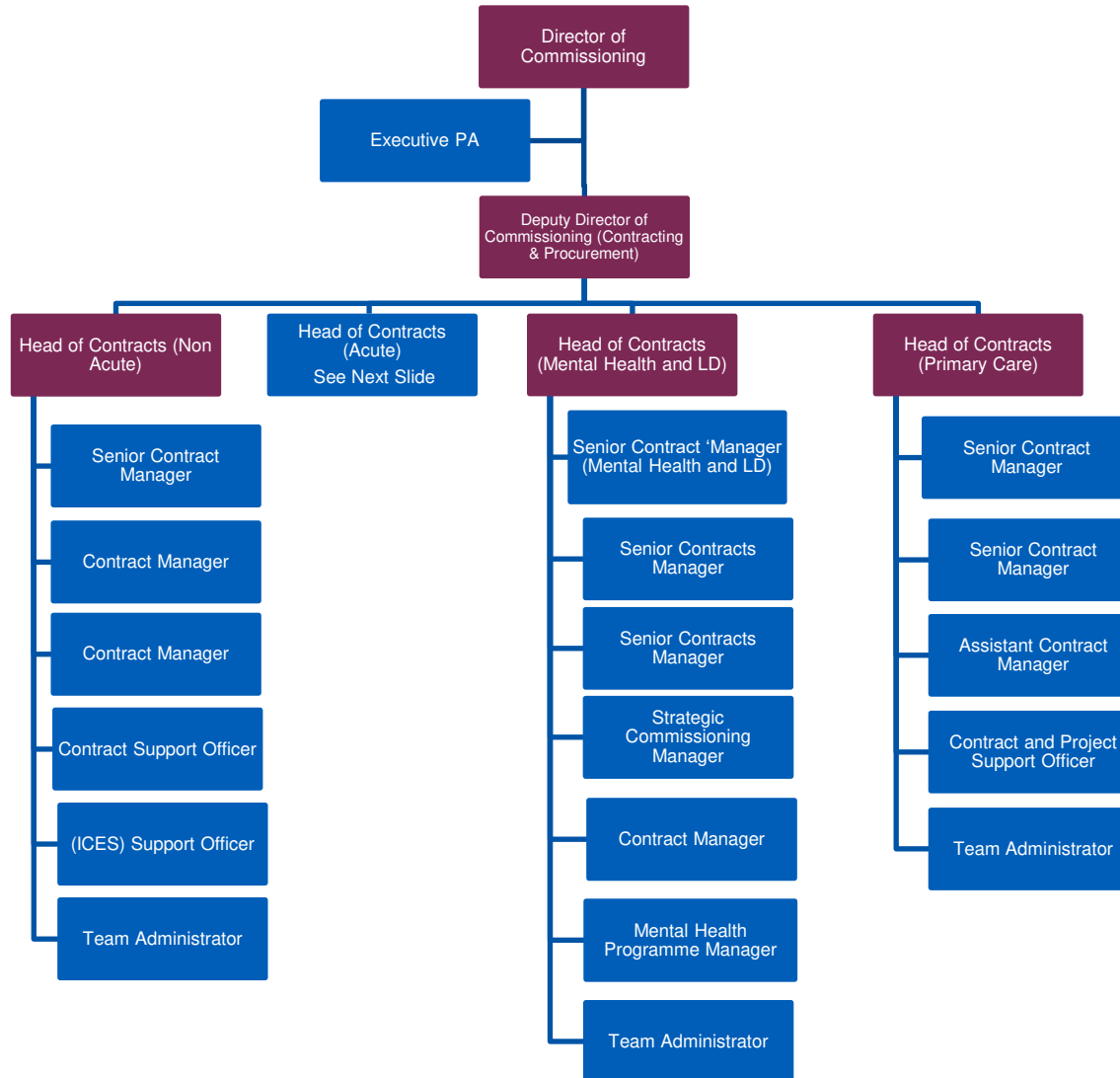




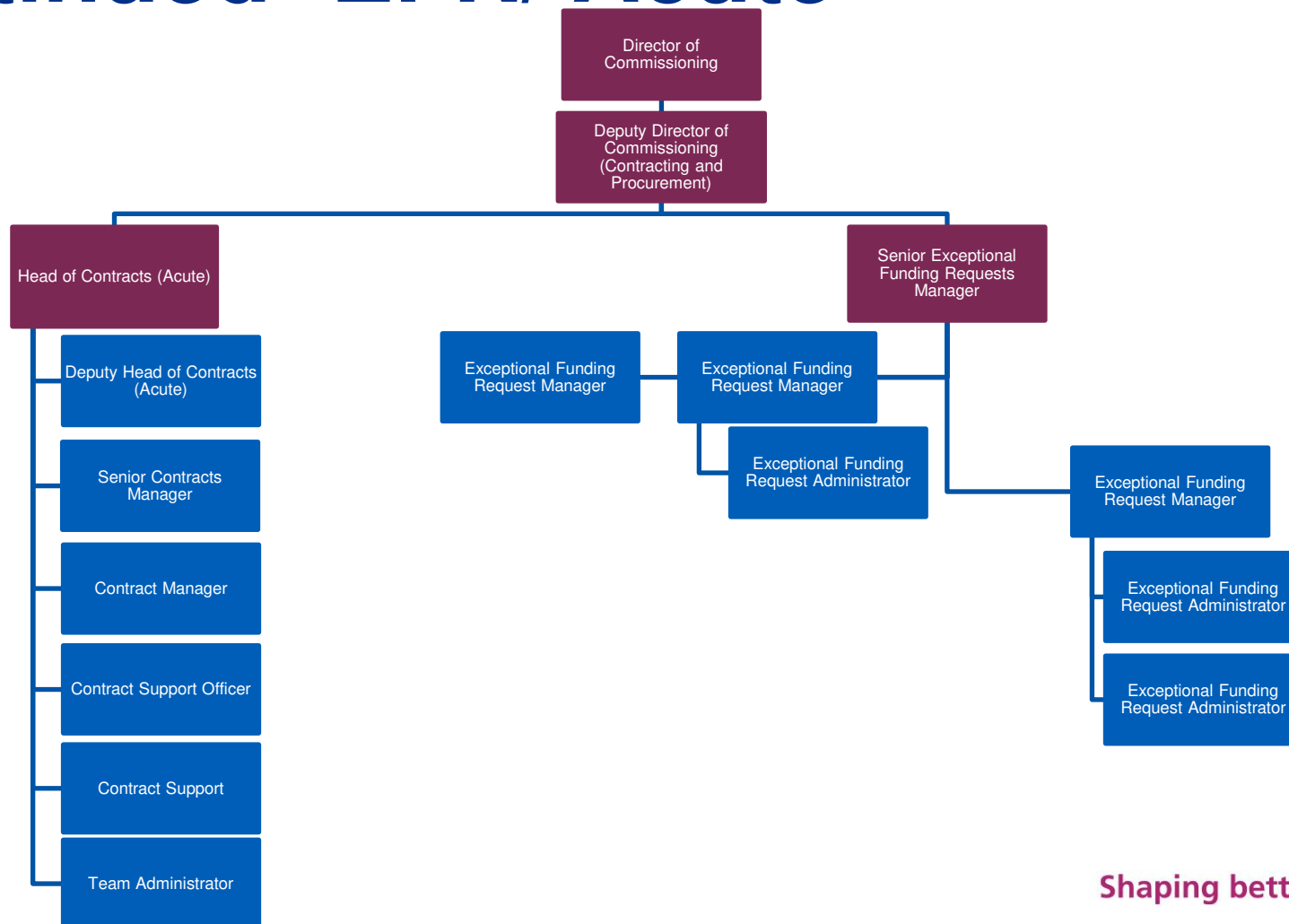
# BI – Modelling & Analytics Team



# Commissioning Contract & Procurement



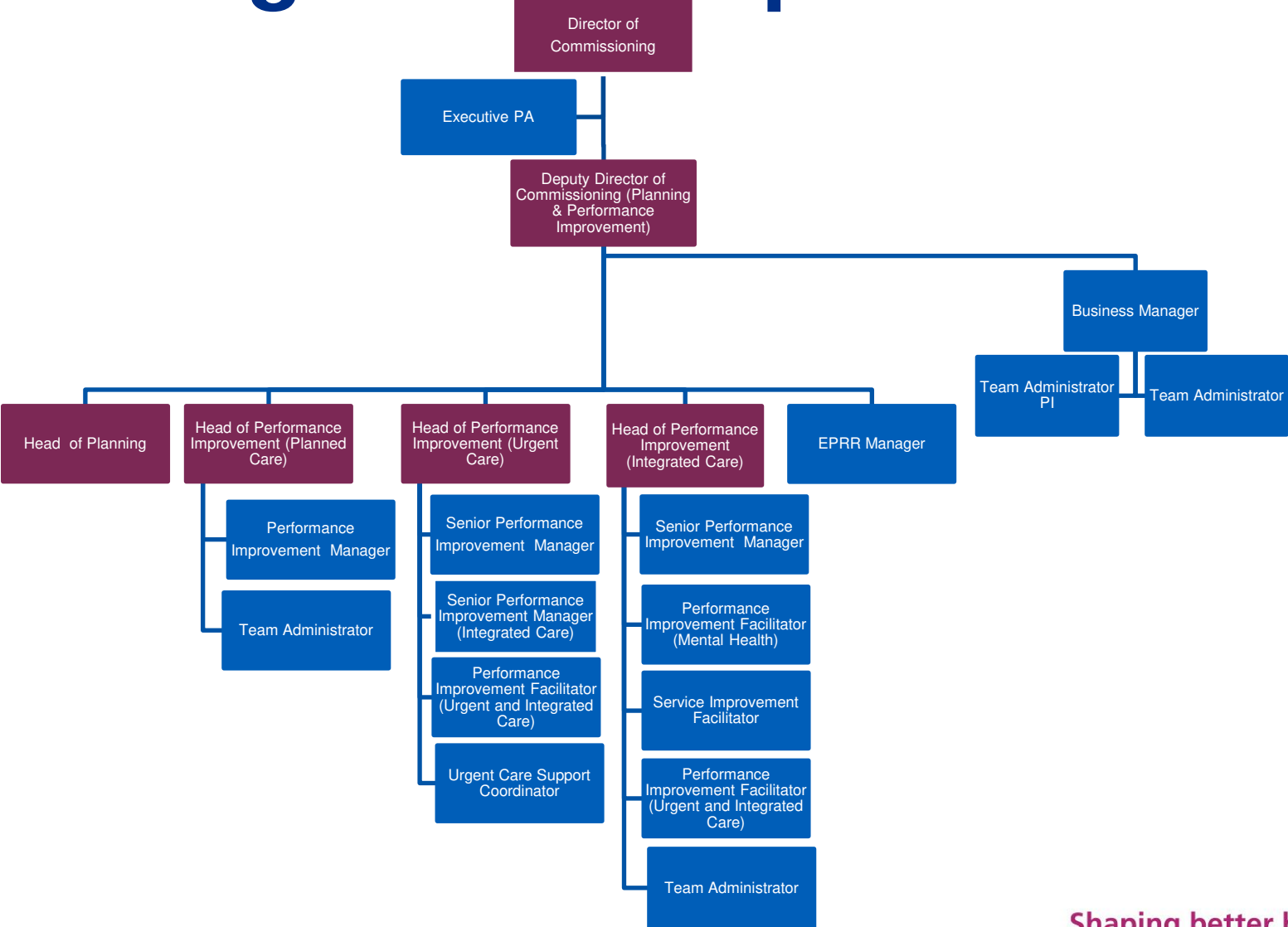
# Commissioning Contract & Procurement Continued- EFR/ Acute



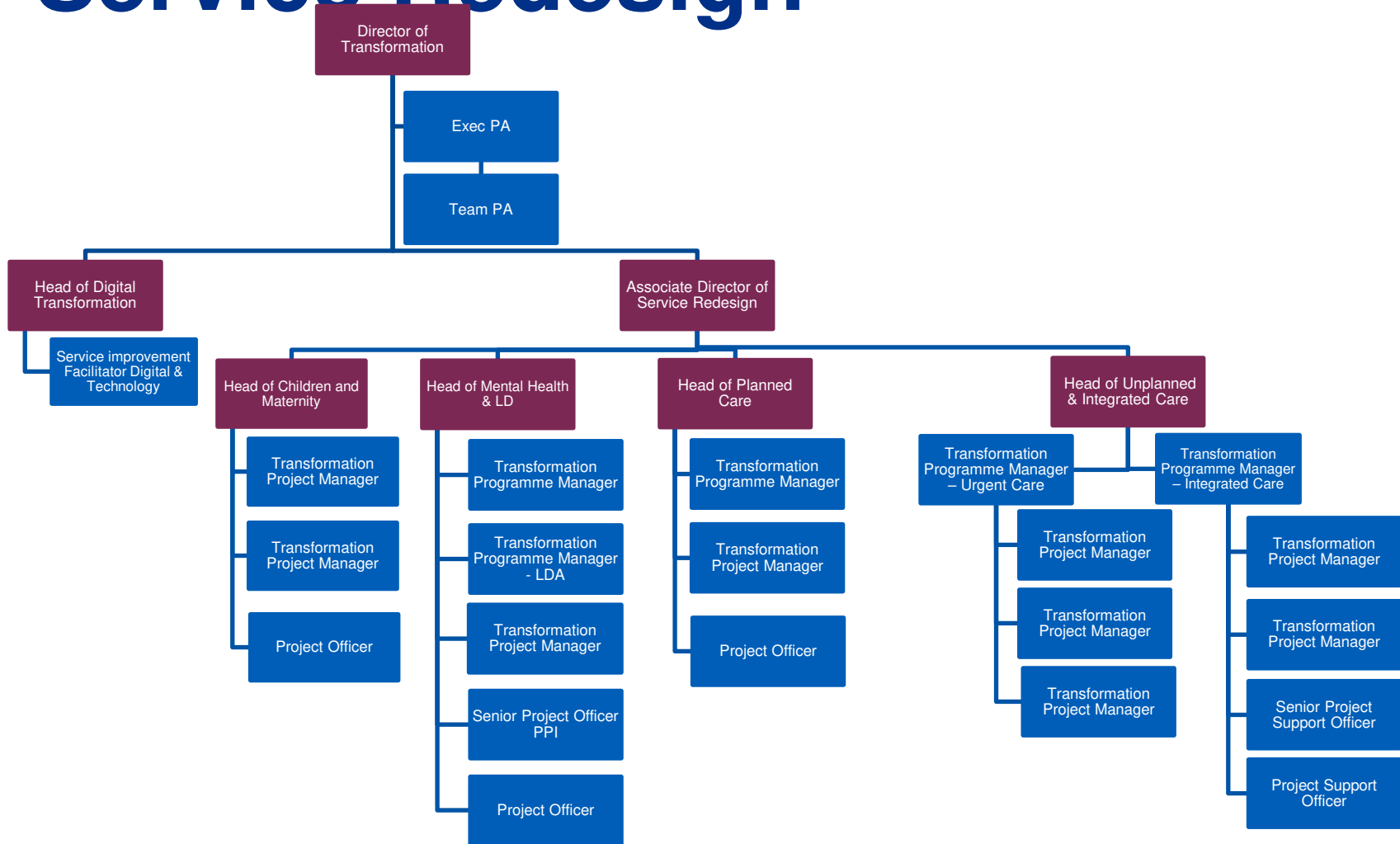
# Commissioning Planning & Perf. Imp.



**Bristol, North Somerset  
and South Gloucestershire**  
Clinical Commissioning Group



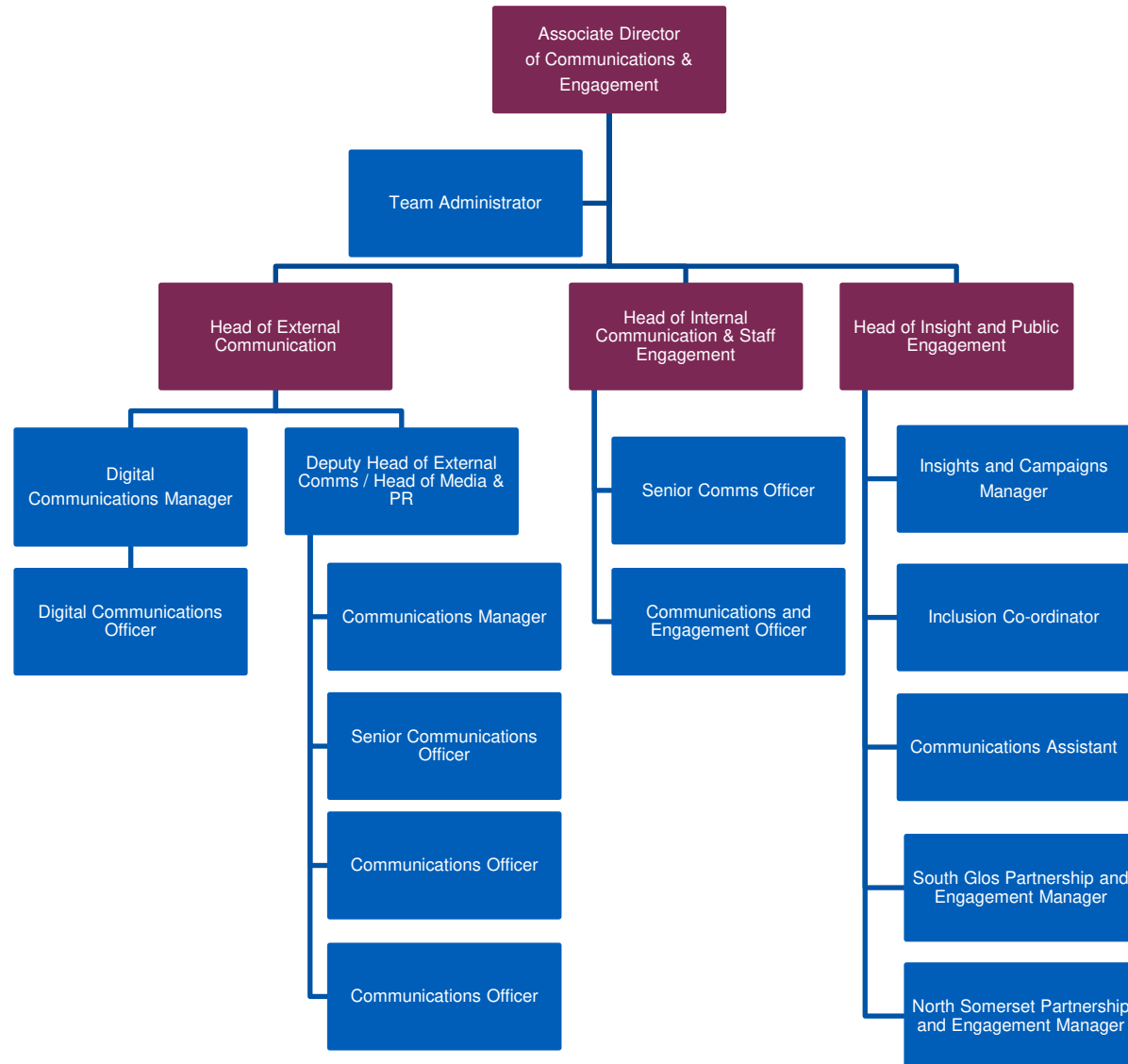
# Transformation Service Redesign



# Transformation Comms & Engagement



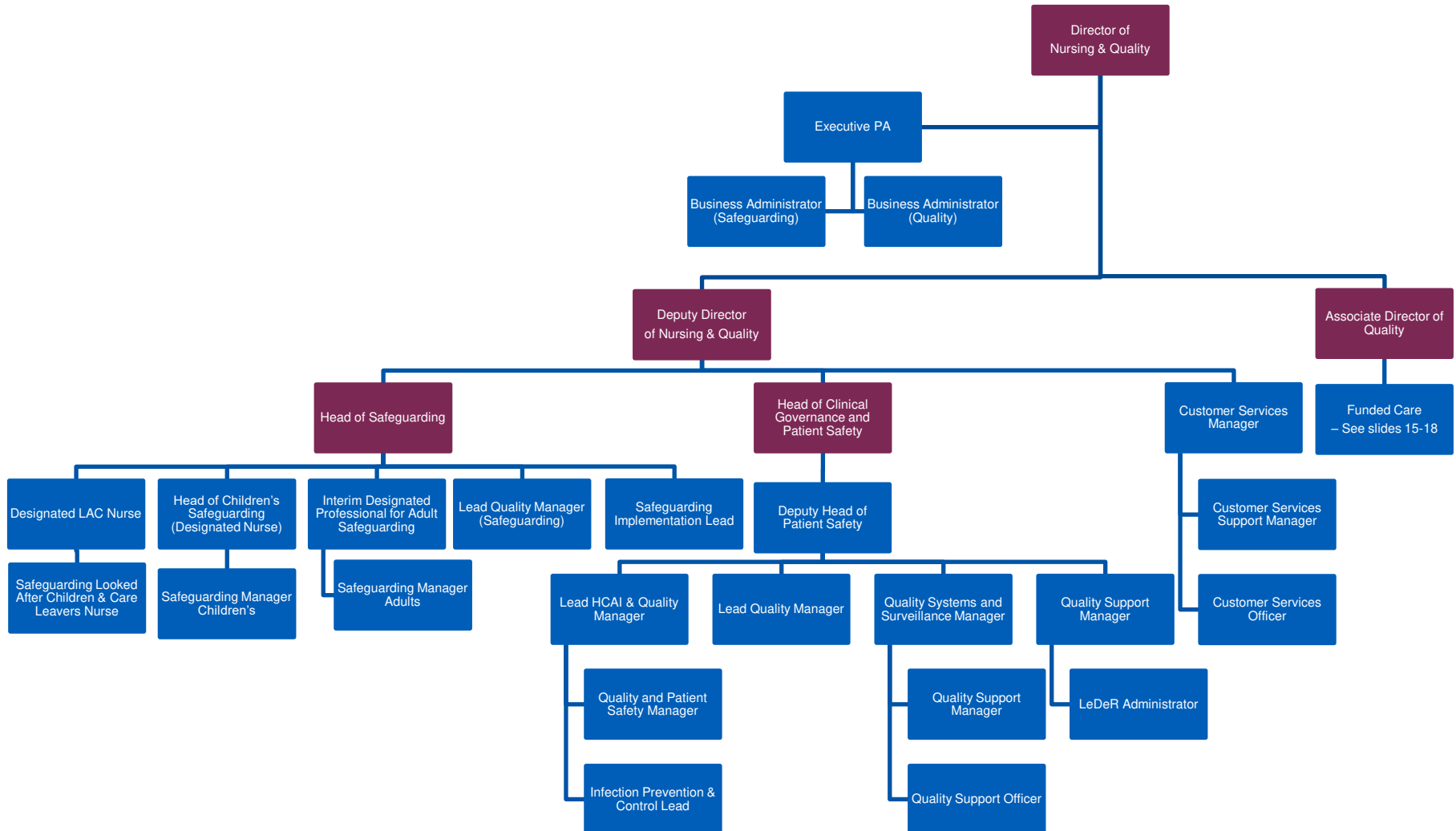
Bristol, North Somerset  
and South Gloucestershire  
Clinical Commissioning Group



# Nursing & Quality



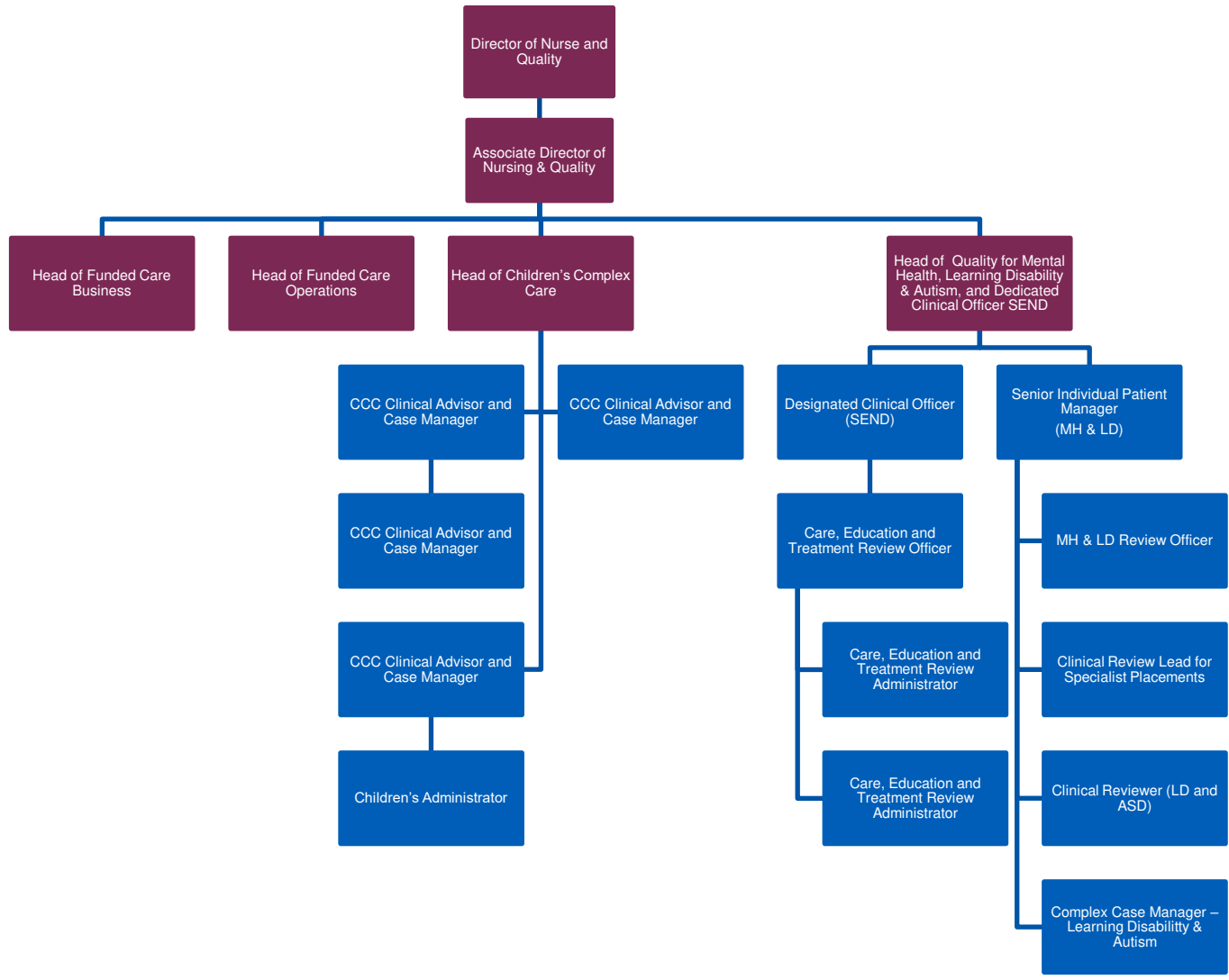
**Bristol, North Somerset  
and South Gloucestershire**  
Clinical Commissioning Group



# Nursing & Quality - Funded Care



**Bristol, North Somerset  
and South Gloucestershire**  
Clinical Commissioning Group

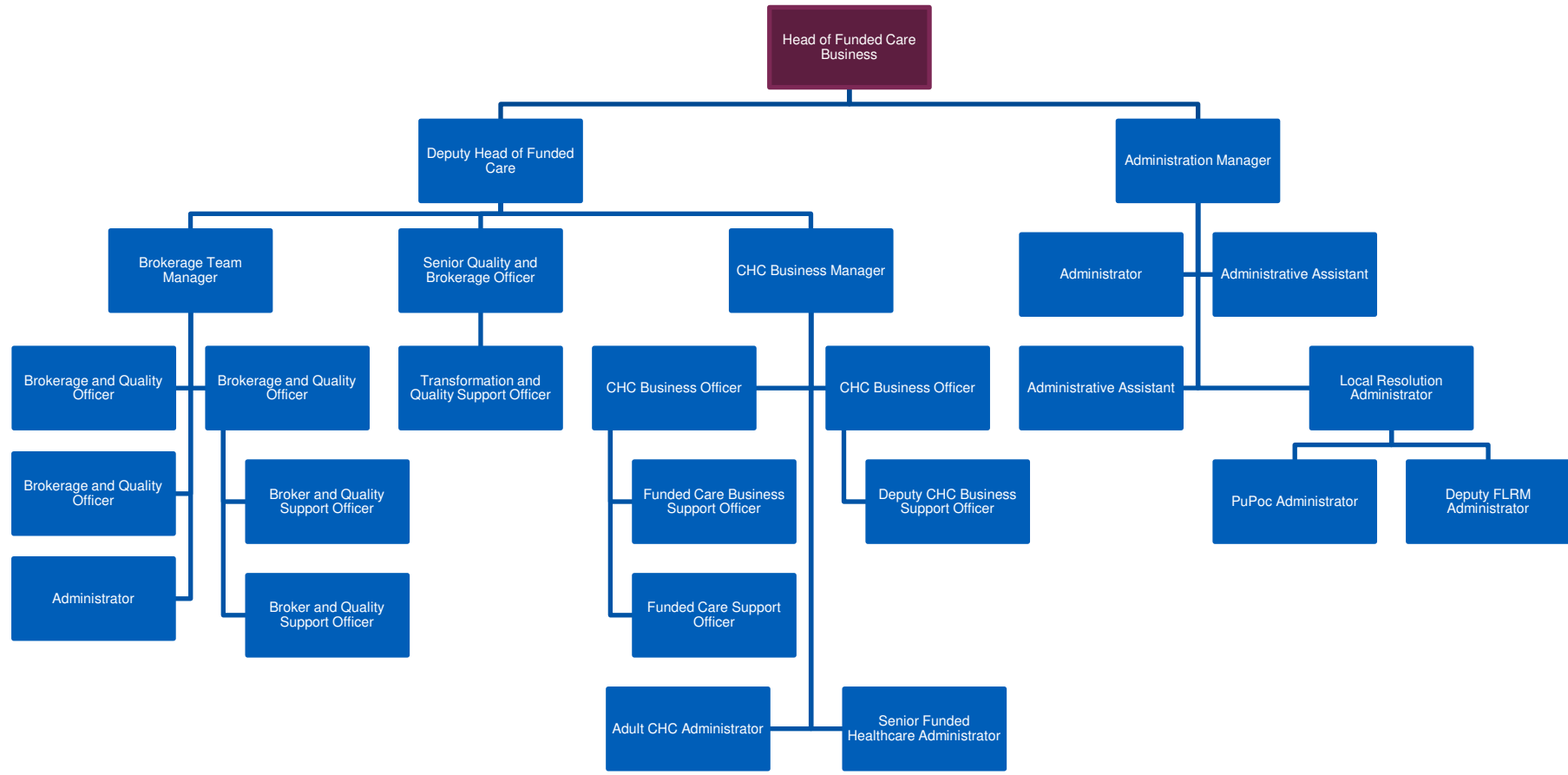




# Nursing & Quality Funded Care - Continued



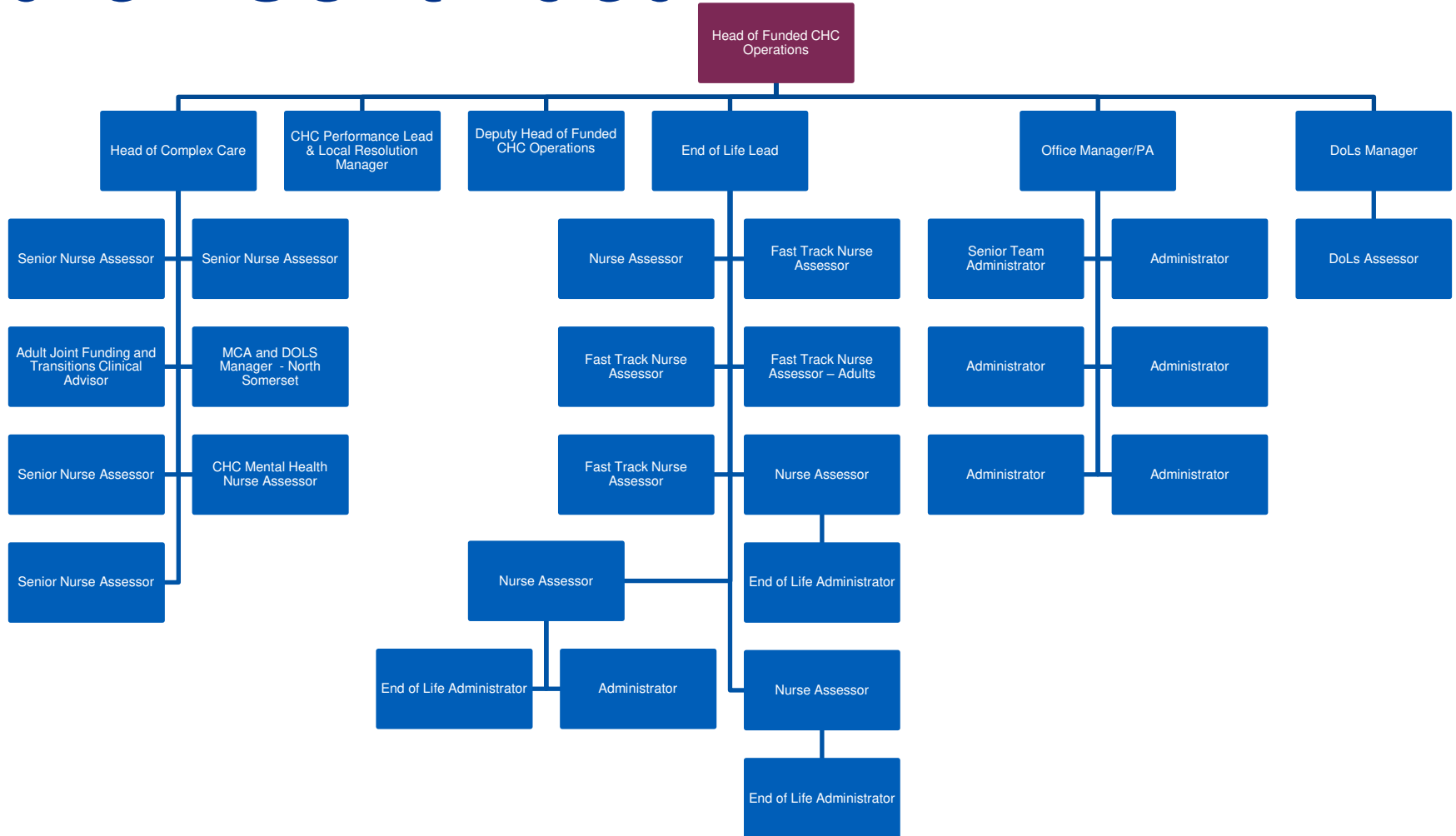
Bristol, North Somerset  
and South Gloucestershire  
Clinical Commissioning Group



# Nursing & Quality Funded Care - Continued



Bristol, North Somerset  
and South Gloucestershire  
Clinical Commissioning Group

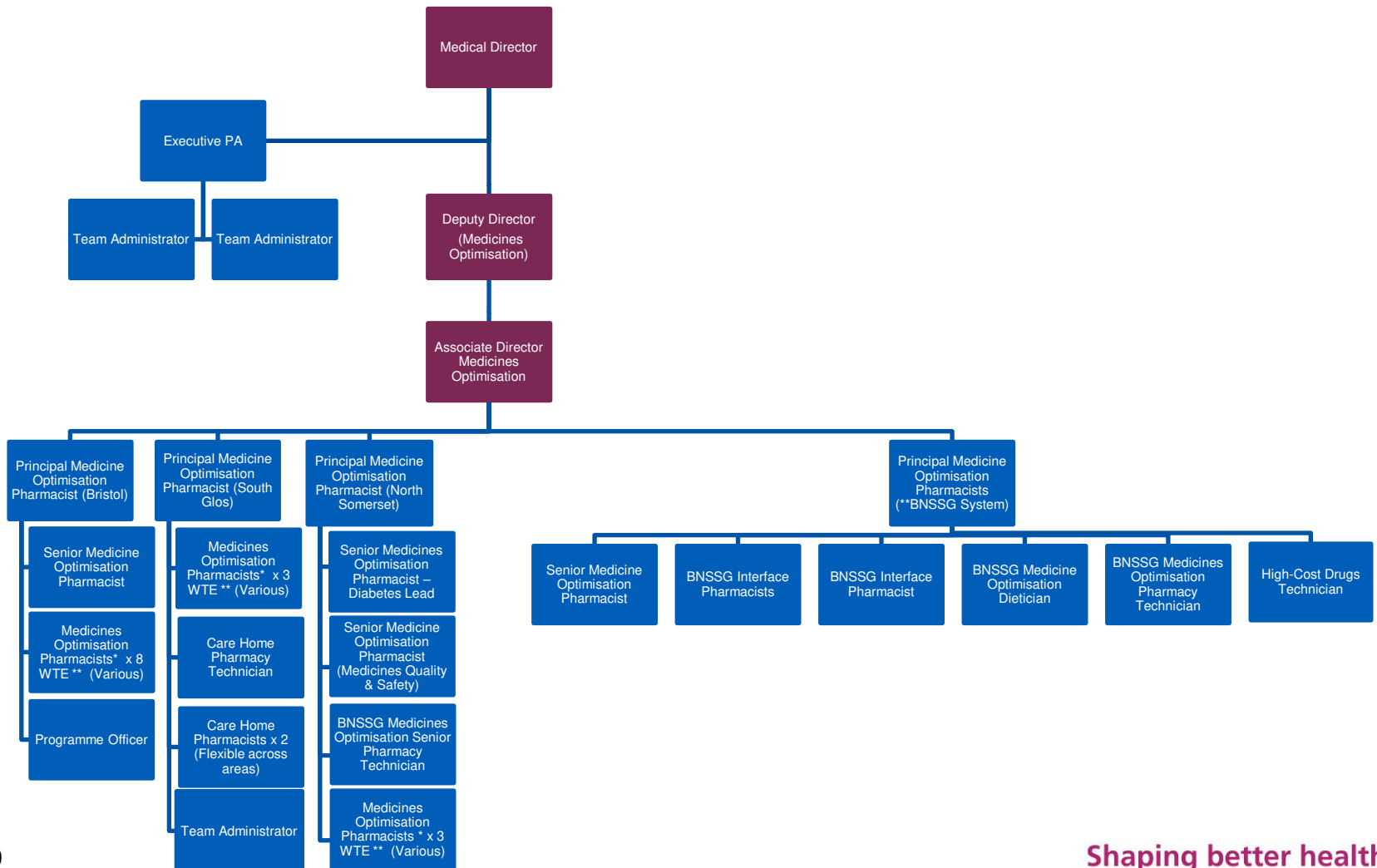




# Medical Directorate Clinical Effectiveness



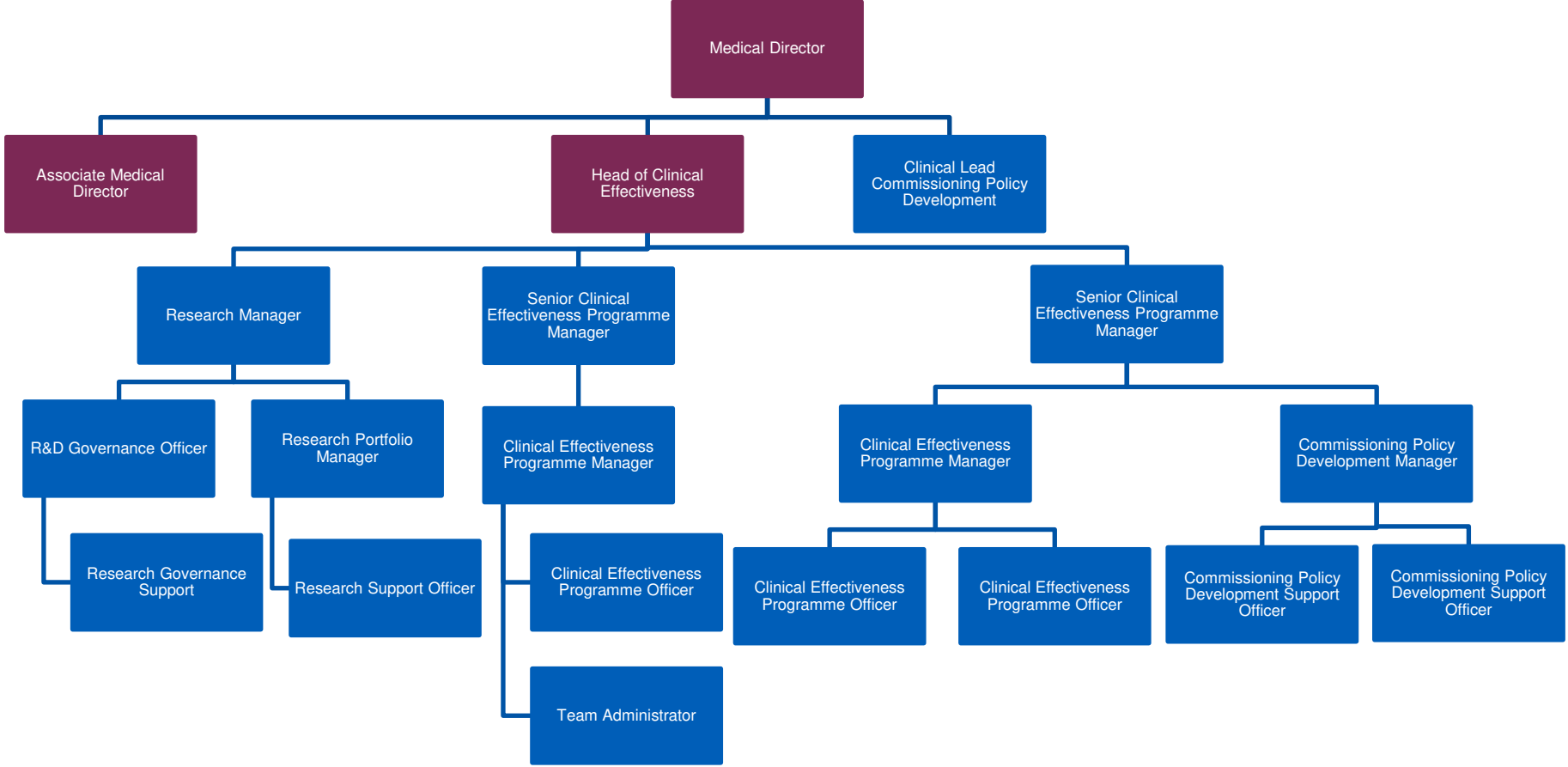
Bristol, North Somerset  
and South Gloucestershire  
Clinical Commissioning Group



# Medical Directorate- Clinical Effectiveness and Research



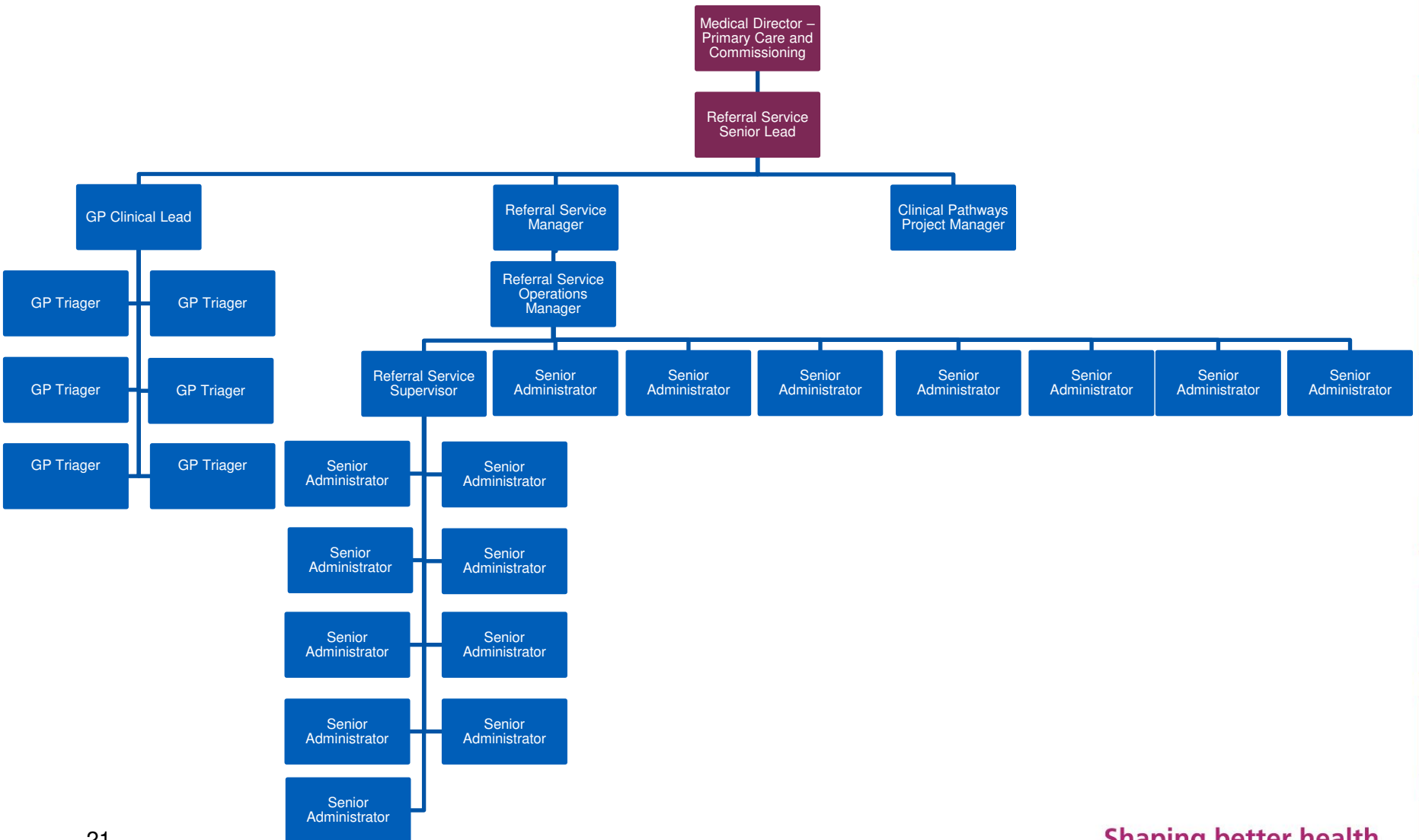
Bristol, North Somerset and South Gloucestershire  
Clinical Commissioning Group



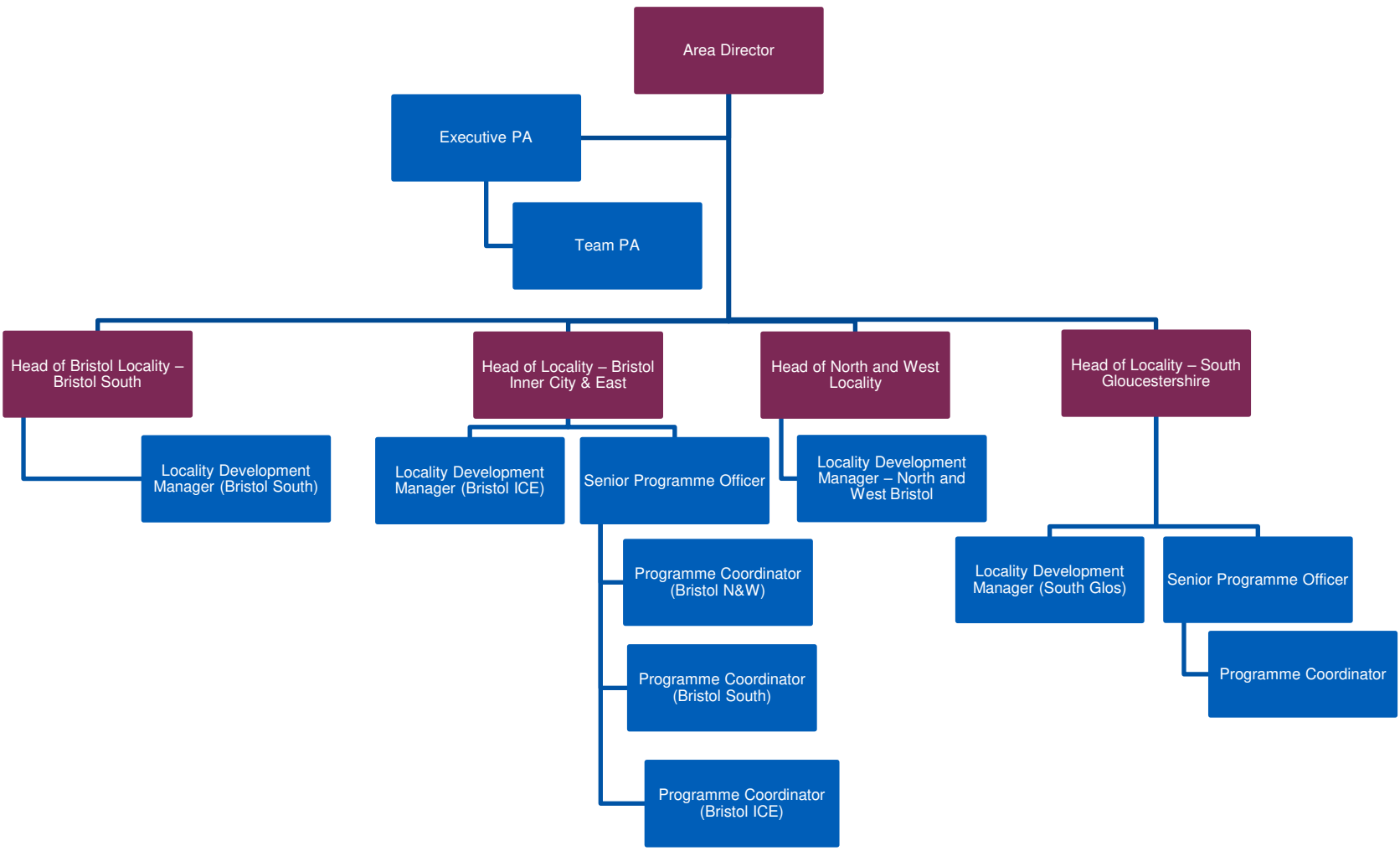
# Primary Care and Comm. Referral Service



Bristol, North Somerset  
and South Gloucestershire  
Clinical Commissioning Group



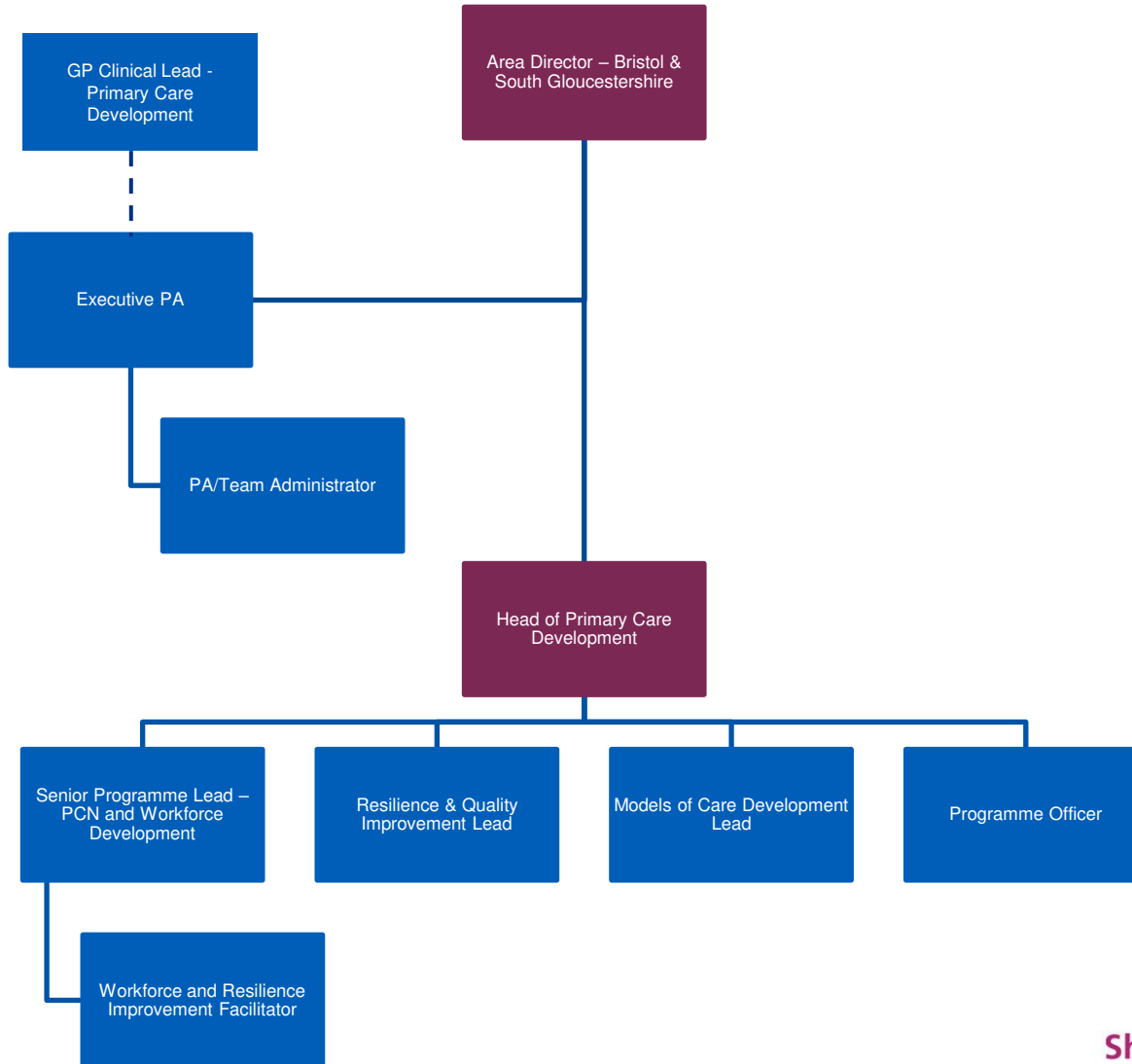
# Area Directorate – Bristol & South Gloucestershire



# Area Directorate – Bristol & South Gloucestershire



Bristol, North Somerset  
and South Gloucestershire  
Clinical Commissioning Group





# Area Directorate – North Somerset



Bristol, North Somerset  
and South Gloucestershire  
Clinical Commissioning Group

