

Together we are BNSSG

BNSSG ICB Research Team – Quarterly Newsletter 6th Edition – August 2024

Thank you for visiting the sixth edition of the Bristol, North Somerset and South Gloucestershire Integrated Care Board (BNSSG ICB) Research Team's newsletter.

This newsletter has the following sections to keep all our stakeholders up to date with our work:

- News & Upcoming Events - This section lists any upcoming events in our research network.
- New Research Grant Awards - This section details which new projects we are hosting and supporting.
- New ICB Awards for Development - This section highlights development project awards we are funding with our Research Capability Funding (RCF).
- Impact - This section describes our Impact Accelerator Unit and highlights an Impact Case Study.
- Researcher Spotlight - This section features one of the many brilliant academics we work with.
- Upcoming Opportunities - Here you can find out about our next responsive call for Research Capability Funding and any other opportunities we have.
- The Research Team - This section tells you a little bit more about us, who we are and what we do.
- Contact Us - Here you can find our contact details if you would like to get in touch.

News and Upcoming Events

Centre for Academic Primary Care (CAPC), University of Bristol, have a number of upcoming events you can find below:

[Events | Centre for Academic Primary Care | University of Bristol](#)

Centre for Health and Clinical Research (CHCR), UWE Bristol, events can be found using the link below:

[Events in the Centre for Health and Clinical Research \(CHCR\) - Centre for Health and Clinical Research | UWE Bristol](#)

New Research Grant Awards

As the Research Team at the BNSSG ICB we host a portfolio of research grants and support them through their application and dissemination. Below are our most recent grants that we host with links to their plain English summaries on our website:

- [The effectiveness and cost effectiveness of coenzyme Q10 in heart failure with reduced ejection fraction: a pragmatic, patient-centred, data-enabled trial in primary care \(CORAL\)](#). Led by [Dr Maria Pufulete](#), Senior Research Fellow, University of Bristol and [Dr Rachel Johnson](#), Associate Professor in Primary Care, University of Bristol.
- [Improving primary care antibiotic prescribing to reduce antibiotic resistant urine infections: the IPAP-UTI programme](#). Led by [Professor Alastair D Hay](#), Professor of Primary Care, University of Bristol.
- [Pragmatic Evaluation of Effectiveness and Acceptability of the Bristol Medication Review Toolkit \(BRISMED\)](#). Led by [Dr Deborah McCahon](#), Research Fellow, University of Bristol and [Professor Rupert Payne](#), Professor of Primary Care and Clinical Pharmacology, University of Exeter.
- [HEaLth iMPact of E-bikes and e-scooTers \(HELMET\): Baseline data collection for the evaluation of e-bike and e-scooter hire schemes](#). Led by [Dr Miranda Armstrong](#), Senior Lecturer in Physical Activity in Adults, University of Bristol.
- [A primary care system-level training and support programme for the secondary prevention of domestic violence and abuse: a multicentre cluster randomised trial with economic and process evaluation](#)

ICB Awards for Development Projects

We support a number of awards through our Research Capability Funding (RCF), with quarterly responsive calls, Launching Fellowships, Researchers in Residence and Academic Awards opportunities.

Research Capability Funding

You can find our application form and guidance on our website [here](#).

Our next call for Research Capability Funding will be 14th of October 2024

Type 1 Projects

These are very early stage projects, exploring a particular health condition or the needs of a particular patient group to find out what research is most needed. Mainly these projects involve talking to the people who plan, deliver and receive health and care services.

Type 2 Projects

These are projects with the aim of writing and developing a NIHR grant application. This can include pump priming work required to write a high quality NIHR application (e.g. preliminary data collection, literature review).

Please find more information [here](#).

Launching Fellowships

This scheme supports early career, post-PhD researchers to establish their academic career, enhance their publication record and develop their first research grant application (e.g. an NIHR Fellowship or RfPB). We currently have two Launching fellowships underway, and we are delighted to have recently awarded a new Fellow, Dr Julie Armoogum, who started in March 2024.



Launch↑ng Fellowships 2024

Have you **completed your PhD within the last three years**, or are you about to?

Would you like **funding** to establish your academic career?

Would you like to **publish papers** from your PhD and **secure your first research grant**?

If the answer is yes, please **apply for BNSSG ICB Launching Fellowships 2024**

Deadline for applications: 02 August 2024

Interviews will be held on the 23rd September 2024



For more information and to find the application form and guidance search for "BNSSG Launching Fellowships" or visit:
www.bnssgccg.nhs.uk/about-us/what-we-do/research-and-evidence/support-researchers/research-capability-funding-rcf/

Researchers in Residence

Researchers in Residence involves co-locating researchers within non-academic organisations. This enables non-academic organisations to make research a part of their ongoing processes, and researchers to become more involved in contributing to public health decision-making.

More information about our awards can be found on our website [here](#).

Academic Career Award (Senior Researcher)

This award is for academics from the University of Bristol and the University of the West of England.

This award supports Senior Research Fellows and/or Senior Lecturers who are not core funded by their University employer. This award will enable academics to dedicate time to activities that support their career stability e.g. applying for research grants or Advanced Fellowships.

These Awards are intended to help reduce the pressures of short-term contracts by awarding funding equal to 50%WTE of the recipients' salaries over an 18 month duration.

Please speak to your line manager about this award if you are interested.

More information about our awards can be found on our website [here](#)

Impact

In partnership with UWE and University of Bristol, BNSSG ICB has developed [The Impact Accelerator Unit \(IAU\) - NHS BNSSG ICB](#). The IAU is a dedicated resource to speed up the embedding of evidence into our health and care system to increase the value of the services provided in BNSSG.

What the IAU will do, and how, will be different for every piece of evidence. Embedding evidence may require updates to clinical guidelines, ICB policy, clinical systems, referral pathways, training programmes, and/or contracts.

The IAU team will bring together all relevant stakeholders to plan the required activities and use the IAU resources to deliver the changes required for lasting and sustainable improvements.

As part of our goal to promote Knowledge Mobilisation we will be highlighting an Impact Case Study that the Research Team has supported in each edition of our newsletters. Here are some recent case studies:

- Professor Alastair Hay - [British Medical Journal - 'Start private, end private' - a principle that could help protect the NHS from subsidising private care.](#)
- Professor Eszter Szilassy- [The road to funding for a complex clinical trial – ingredients for success – Primary Care Research & Teaching Blog \(bristol.ac.uk\)](#)
- Professor Pat Hoddinott- [Cash incentives drive weight loss in men – News \(bristol.ac.uk\)](#)

Meals on Wheels

Researchers at the University of Bristol are developing a map of Meals on Wheels provision to help health professionals refer people to the service. Contact Angeliki.Papadaki@bristol.ac.uk for more information.

Festchrift for Professor Chris Salisbury.

In July we celebrated the distinguished career of our esteemed colleague, Chris Salisbury, Professor of Primary Health Care at the Centre for Academic Primary Care (CAPC) and National Institute for Health and Care Research (NIHR) Senior Investigator, who will be retiring at the end of the month.



Find more information [here](#)

Message from Paul Roy:

This was the first Festchrift I have attended, and it was an uplifting and inspiring event that celebrated the highlights from Chris' career, of which there were many. The mood was also a mixture of sadness, gratitude and optimism for a good colleague and leader moving on to new things, and also a realisation that we who are remaining have a duty to continue the efforts that Chris has given so much time to.

Apart of Chris' legacy that was not mentioned at the event, but for which we in the ICB will be remain very grateful for, was the work that Chris did whilst Head of the Centre for Academic Primary Care (CAPC) to establish the successful partnership between the University of Bristol and the ICB (then PCT). Since 2009, this mutually beneficial partnership has expanded and brought in funding that has directly supported the careers of over 400 individual people working across BNSSG, University of Bristol and UWE.

And there is the lasting legacy of the BNSSG ICB Academic Career Award (ACA) that was the brainchild of Chris. Asked what he would do if he could do anything he liked with some funding, Chris said he would use those funds to support mid-career academics to progress their careers in the way they see best.

As Chris happily chases his grandchildren around the Downs in retirement, we will gratefully carry on his good work of building and maintaining supportive partnerships between academia and health and care services as best we can.

Department Spotlight



We interviewed Professor Beth Daniels, Director of the Centre for Appearance Research at the University of West of England who celebrated their 30th Anniversary this year.

1. What difference do you hope the department's research will make to the people in Bristol, North Somerset, and South Gloucestershire?

Both locally and globally, we at the Centre for Appearance Research (CAR) carry out research aimed at identifying effective ways to promote body acceptance and appreciation, cultivate environments that value diversity in appearance, and improve the lives of those affected by appearance concerns. In short, we aim to help people live happily in their bodies in a society that accepts all bodies equally. We are very grateful to all of the individuals and NHS teams in the BNSSG area who have helped us with our research over the years.

2. If you could change one thing in your world, what would it be?

In an ideal world, appearance would not be the central way we think about ourselves and others. Instead, our whole humanity – our thoughts, personality, and competencies – would take centre stage and guide our views about ourselves and others.

3. What are you most proud of and why?

Personally, I am most proud of serving as the Research Centre Director for CAR. It is an exceptional group of scholars dedicated to improving the psychological well-being of people of all ages and backgrounds. CAR was founded 30 years ago and has developed into the leading centre of excellence in appearance and body image research internationally. It is an honour to serve in my role, providing support, guidance, and leadership to this outstanding team.

4. What are the biggest issues in your research area?

A lot of the research we conduct at CAR is focused on creating and testing interventions that will effectively reduce body image concerns and support people with visible differences (i.e., individuals with health conditions that affect their appearance). Research is essential for identifying what works and what does not work, so resources can be directed into effective interventions and not wasted on ineffective ones.

5. What have been/are the biggest challenges in your research and how did you/are you planning to overcome them?

Obtaining funding to carry out our work is always a challenge. Sometimes, appearance concerns get left out of the conversation on mental health and it can, therefore, be harder to get funding needed for this work. While we generally cannot influence funding decisions directly, we can increase the visibility of appearance concerns as an important issue in society. We do this by giving presentations to a wide range of groups including parents, educators, policymakers, and the general public. We also provide media interviews to local, national, and international outlets and we create our own media including Appearance Matters: The Podcast!, which can be found here: <https://soundcloud.com/appearance-matters>, as well as via our social media accounts on LinkedIn, Instagram, X/Twitter, and Facebook. Please subscribe, like, and follow our content if you are interested in our work.

6. How do you hope the Centre for Appearance Research will develop as a department in the future.

This question is timely as CAR is just about to embark on developing our next 5-year strategic plan. Collectively, we will evaluate how we can make the most impact as a Centre, capitalizing on our strengths and stretching ourselves in new directions to meet the needs of the people we aim to serve in our work. Stay tuned!

Upcoming Opportunities

Research Capability Funding Responsive Call

Our next responsive call for RCF is 5pm on the 14th of October 2024. Our application form and guidance can be found on our [website](#).

The Research Team

Since 2013, we have been the [highest ranking ICB](#) in England for [Research Capability Funding](#). Each year, we support more than 60 individuals to develop new research grant funding applications, including academics, commissioners, GPs, local authority, and other care staff.

Most of the research we support is designed with service commissioners, and this helps us ensure that all of the research we support directly aligns with ICB or national priorities.

In total, we host and support around 40 research grants funded by the National Institute for Health and Care Research (NIHR), with a total value of more than £35 million.

What we do:

The Research team is used most often for the following areas of support:

- Research Capability Funding
- Contract hosting
- Research governance support
- Grant application review and support
- General research advice

We also offer support in the following areas:

- Networking and facilitation of connections (e.g. NHS, academic, Local Authority, community health)
- NHS finances and costings
- Study recruitment logistics
- Data access requests
- Software (e.g. GP software and Commissioning Support Unit)
- Intellectual Property management
- Contract enforcement
- Implementation and impact

Meet the Team

Meet the members of our team below. We've highlighted some of the areas we each focus on, though we can help with any of the areas listed above. Please contact

bnssg.research@nhs.net for support.



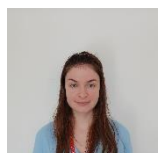
Paul Roy – Associate Director for Research.

As our Director of Research, Paul heads up the team. His main area is oversight of the portfolio and strategy



Kat Bagi- Research Portfolio Manager.

Kat is our Research Manager. Her area of focus is research finance and information governance.



Rebecca Howling- Research Portfolio Officer

Becky is our Research Portfolio Officer. She can help with costing your grant applications with the University of Bristol, the completion and authorisation of SoECATs as an AcoRD Specialist and our Researchers in Residence funding.



Alison Diaper- Senior Research Fellow

Alison works in a dual role between BNSSG ICB and the University of the West of England (UWE Bristol). She can help with research design and grant applications with UWE Bristol, including costings and SoECATs.



Rachel Avery- Research Governance Officer

Rachel is our Research Governance Officer. She can help with setting up a study for recruitment.



Joolz Clements- Research Finance Support

Joolz is Research Finance Support. She can help with invoices and PPI payments.



Ros Hussey- Research Governance Support

Ros is Research Governance Support. She can help with Letters of Access and the review of studies opening in BNSSG.



Matt Freeman- Research Portfolio Support

Matt is Research Portfolio Support. He can help with financial reporting and working to reduce health inequalities.

Contact Us

Follow us on Twitter:

[NHS BNSSG ICB Clinical Effectiveness & Research \(@BNSSGResearch\)](#)

Tel: [0117 900 2268](tel:01179002268)

Email: bnssg.research@nhs.net

If you would like to be removed from our mailing list or have any queries about the newsletter, please email: bnssg.research@nhs.net

August 2024.